

POLARX

LIMITED

Advancing High-Grade Discoveries to Production

Sept 2024 – Resources Rising Stars



79
Au
Gold
196.97

29
Cu
Copper
63.546

ASX: PXX
www.polarx.com.au

USA focus

Advancing Alaska Range Mine Development:

Total JORC resource 11.2Mt; 269,375t Cu, 213,000oz Au and 3,131,000oz Ag.

2024 Scoping Study: A\$625m pre-tax NPV, A\$223m Capex, 74% IRR. 1.6-year payback.

Stellar Property (100% PXX)

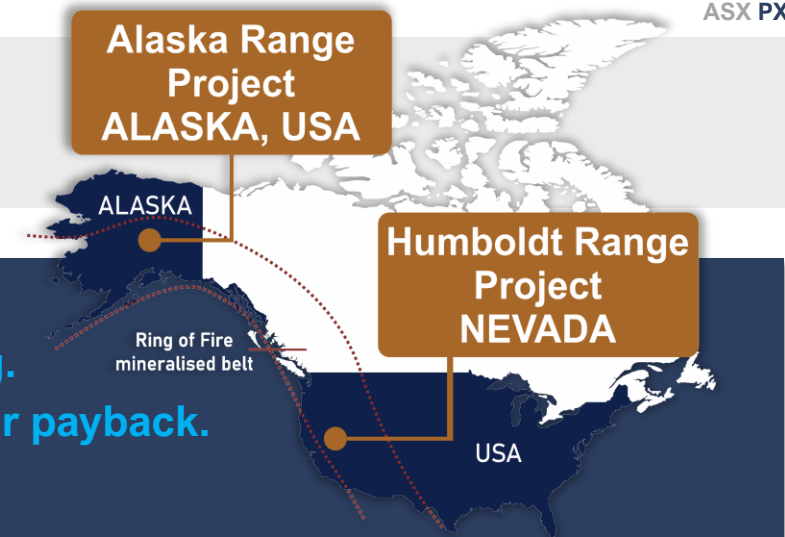
- 4.0Mt @ 1.1% Cu + 1.6g/t Au + 12.6g/t Ag JORC at Zackly Project, open in all directions
- Flotation copper, gold and silver recovery.
- Potential joint co-processing options assessed

Caribou Dome Property (80/90% PXX - earning to 100%)

- 7.2Mt @ 3.1% Cu & 6.5 g/t Ag JORC at Caribou Dome deposit.
- High-grade surface zones up to 7% Cu
- Open in all directions, and numerous untested IP/geochemical targets.

Nevada: Humboldt Range

- Bonanza grades: 9.1m @ 124g/t Au + 49g/t Ag in drilling at Star Canyon
- New 2.7km long mineralized gold target ready to drill
- Tier 1 fiscal and geological jurisdiction
- **Between the 5Moz Florida Canyon Gold Mine, and the 400Moz Rochester Silver mine (which also contains 3.5Moz gold), same geology**
- Outcropping quartz veins and historical mines show numerous assays over 10g/t gold, with peak values of 3,384g/t gold 4,800g/t silver, 22.9% lead, 3.1% Zn



Strong management backed by strong investors

Key Executives and Management:

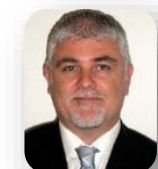


Mr. Mark Bojanjac (Executive Chairman)

A Chartered Accountant with >25 years experience in the resource sector. Has led many successful mining developments, including the discovery and development of the East Kundana goldfield near Kalgoorlie, development of the Boroo gold mine in Mongolia and the Nzema gold mine in Ghana.



Dr. Jason Berton (Managing Director) is a Structural Geologist with >20 years experience, including working for Homestake, Barrick, BHP Billiton and SRK Consulting. He also has experience in private equity and leading several ASX-listed exploration companies exploring for Cu, Au & Li in South America and Australia.



Dr. Frazer Tabcart (non-Executive Director) is an economic geologist with >30 years international experience. Spent 15 years with WMC Resources, prior to leading several ASX-listed exploration companies through discovery, resource delineation and feasibility studies in copper-gold, uranium and coal in North America and Africa.

MKT CAP: A\$24M
CASH: ~A3.0M
DEBT: Nil

MAJOR SHAREHOLDERS	%
Northern Star Resources (Aus)	16.0
Ruffer Gold Fund (UK)	7.9
U.S. Global (US)	3.9
Lundin Mining Corporation (Can)	2.2
Management/Directors	1.8

Top 20 = 57%
Top 40 = 65%

Alaska: USA's Mineral Frontier

TIER 1 Geology:

One of the world's great mineral provinces:

- Over 40Moz Au mined to date
- More than 200Moz Au under development/feasibility study
- In the world's most productive copper belt, >50Mt Cu in feasibility/permitting stage
- World's highest grade giant zinc deposit

Considerably under-explored vs. other TIER 1 provinces:

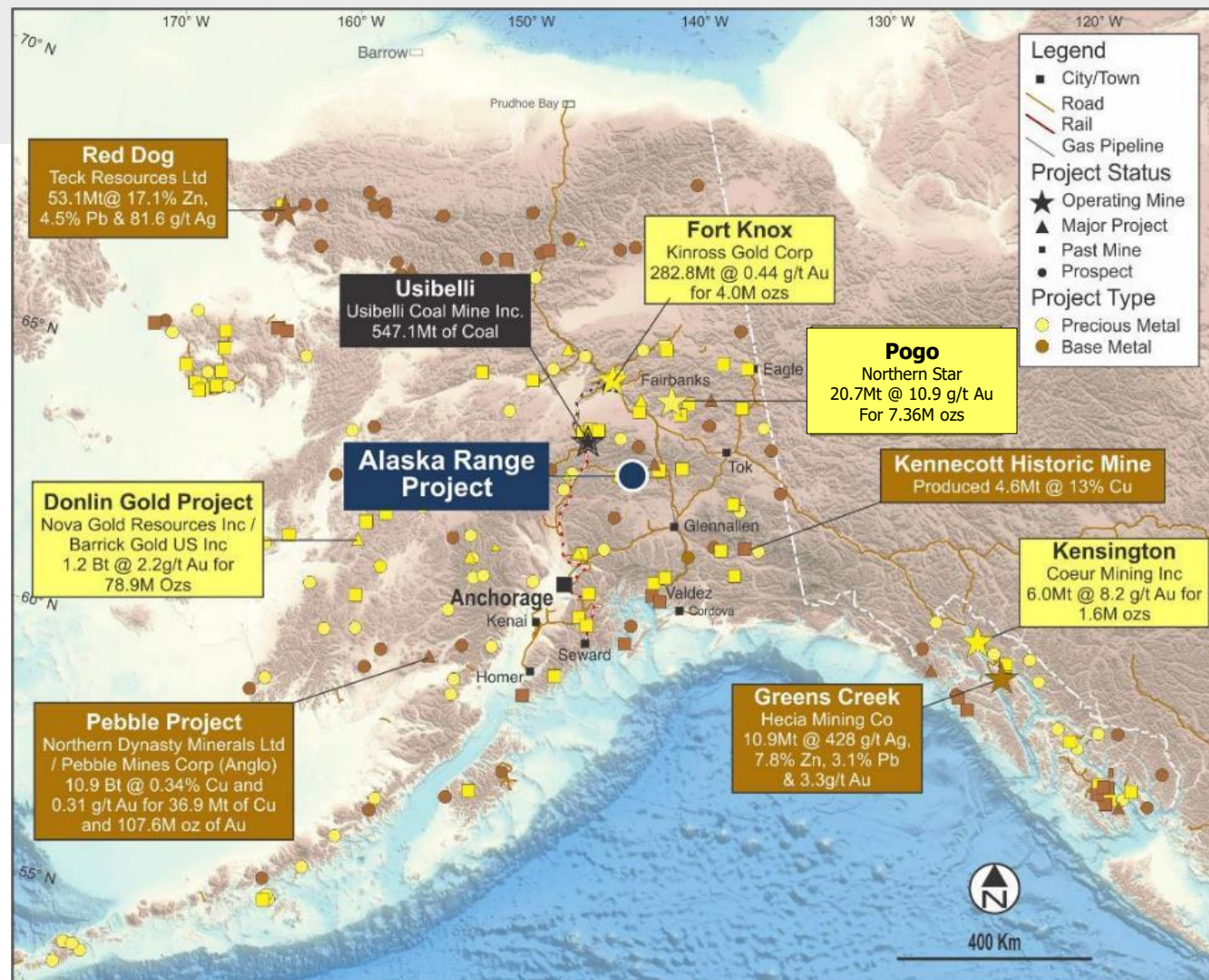
- Many new discoveries made in last decade
- New opportunities are near-surface, accessible

Attractive mining investment destination:

- Transparent regulatory regime for exploration + mining
- Strong local support for job creation
- Home of major players

Strong Australian presence in major projects:

- Northern Star - Pogo (gold)
- South32 investment in Trilogy (copper/cobalt)



79
Au
Gold
196.97

29
Cu
Copper
63.546

47
Ag
Silver
107.87

Decades of Potential



Alaska Range: Overview

Alaska State Mining Claims) covering ~261km²

Caribou Dome

- JV Agreement at Caribou Dome (80% - earning to 100%) and Senator (90% - earning to 100%)
- Massive sulphides remain open at depth and along strike
- JORC resource of 7.2Mt @ 3.1% Cu and 1.6g/t Ag from surface to only 300m depth
- Exceptional +ve Economic **Scoping Study**

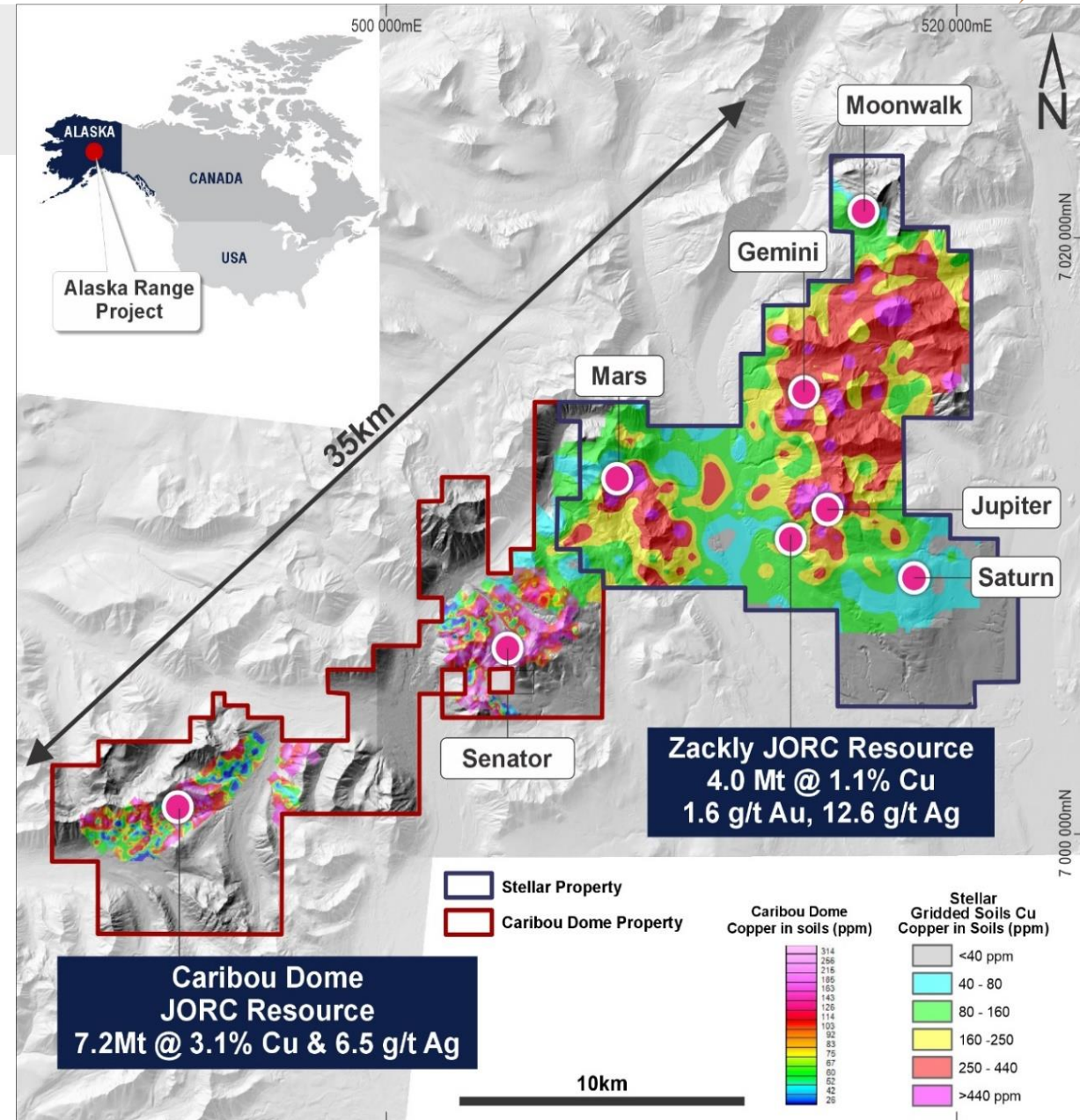
Stellar (PXX 100%)

- Zackly JORC 4.0Mt @ 1.1% Cu, 1.6g/t Au and 12.6g/t Ag) and open at depth along several km's of strike

Porphyry copper-gold mineralisation discovered at Mars in 2019

Drilled 102m @ 0.22% Cu, 0.1g/t Au, hole ended in mineralisation

- High-grade Cu and Au in rock-chip sampling and soils at Jupiter and Gemini
- Intense alteration in drilling and associated geophysical anomalies at the blind Saturn porphyry prospect





Caribou Dome & Zackly Combined: Compelling 2024 Scoping Study

Total JORC resource est. of 11.2Mt containing:

269,375t Copper,

213,000oz Gold, and

3,131,000oz Silver.

- **PolarX more than doubled the Caribou Dome Copper and Silver resource estimate in 2023**
- Conventional sulphide flotation plant.
- Processing 750ktpa over 5 years at Caribou-Dome followed by 600ktpa over 4.5 years mining underground at Zackly.
- Modelled on a 100% project basis without finance leverage.
- Prelim metallurgical recoveries of 90% copper and 79% gold from flotation assumed at Zackly, and 88% copper at Caribou Dome
- **Returns most sensitive to copper price, metallurgical recovery, concentrate grades and operating costs**

Revenue US\$1,491 M A\$2,294 M (\$0.65)
C1 Cash Cost US\$1.36 / lb A\$2.10 / lb <small>Cash costs with Au and Ag credits</small>
Average Annual Free Cash Flow US\$78 M A\$120M <small>Post construction</small>
NPV₇ Pre-tax US\$406 M A\$625 M
Payback 1.6 Years <small>Post construction</small>

Total EBITDA US\$825 M A\$1,269 M
Operating Margin 55% <small>EBITDA/Revenue</small>
Initial Capital Required US\$147 M A\$226 M <small>Including pre-strip & royalty buyback</small>
IRR Pre-tax 73.9%
Mine Life 9.5 Years

(Note - all references to \$ are in US Dollars unless otherwise stated)



Caribou Dome & Zackly Combined: Sensitivity = Next Steps

Sensitivity Analysis indicates:

Metallurgy

Recently Increased Recovery and Concentrate grades delivered the biggest uplift.

Further metallurgical test-work for downstream processing is underway.

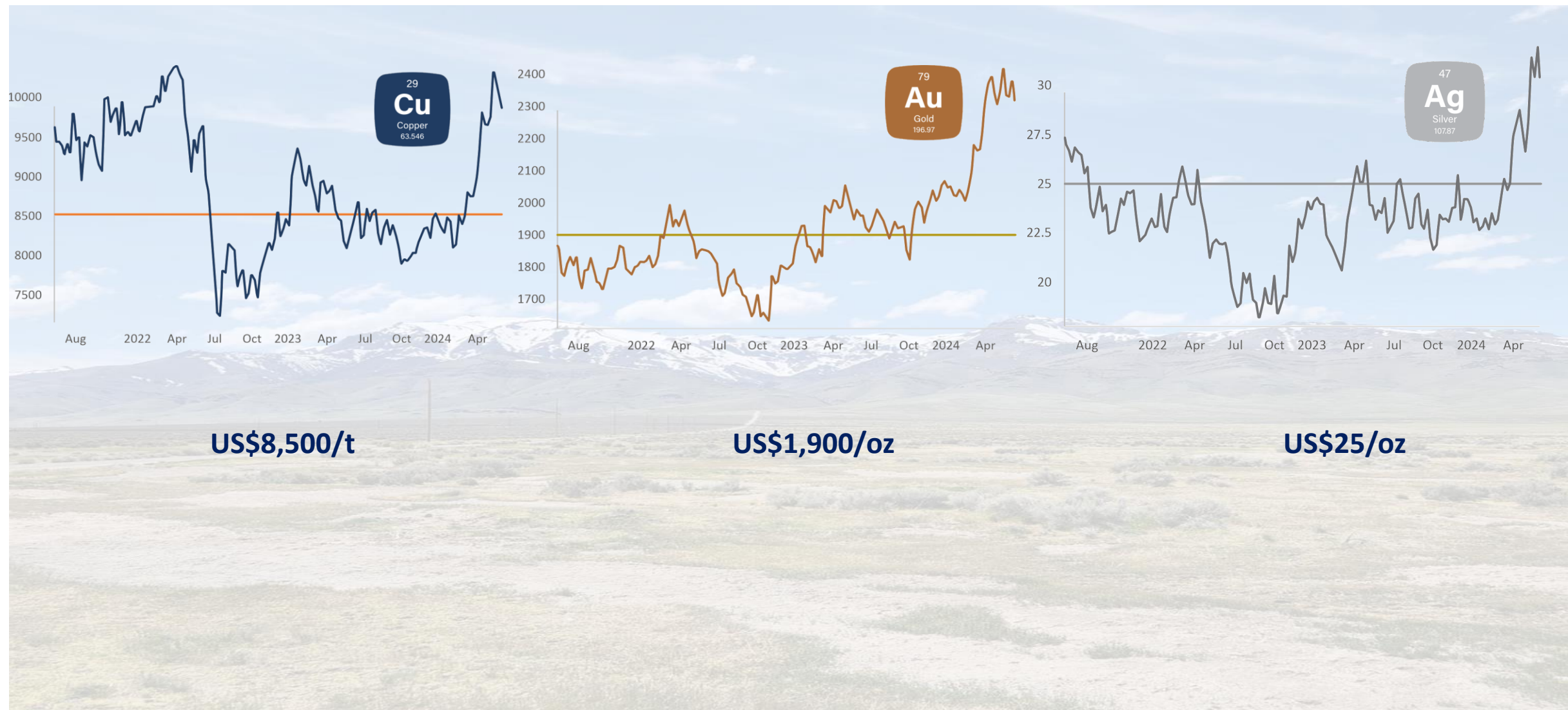
Resource Extension

- **Caribou Dome** has drill intercepts 150m below its existing surface to 300m resource.
- If drilling extended it to 450m and 2Mt was mined underground it could yield a pre-tax NPV increase of US\$130M.
- **Zackly** could deliver an NPV discounted potential US\$22M increase on the same basis by drilling deeper under known geology to add another year's production.

Assuming constant grades	\$US M	A\$ M @0.65
Base Case pre-tax NPV	406	625
Caribou Extra 2Mt underground by drilling 150m deeper	130	200
Zackly Another year's production	22	34
TARGET	558	859

Over 9.5 years, Measured and Indicated Mineral Resources account for 83% of the total tonnes mined and Inferred Mineral Resources comprise only 17%. In the first 3 years approx. 99% of the material to be mined is Measured and Indicated. There is a lower level of geological confidence associated with Inferred Mineral Resources and no certainty that further exploration work will result in the determination of Indicated Mineral Resources nor that the production target itself will be realised.

Metals Prices **UP** since 2024 Scoping Study



US\$8,500/t

US\$1,900/oz

US\$25/oz



Caribou Dome: Very high-grade surface copper

- 4-5% Copper from surface!
- Drill intersections over >800m strike-length
- Open in all directions
- Many un-tested 3D-IP and soil anomalies within 1km of resource

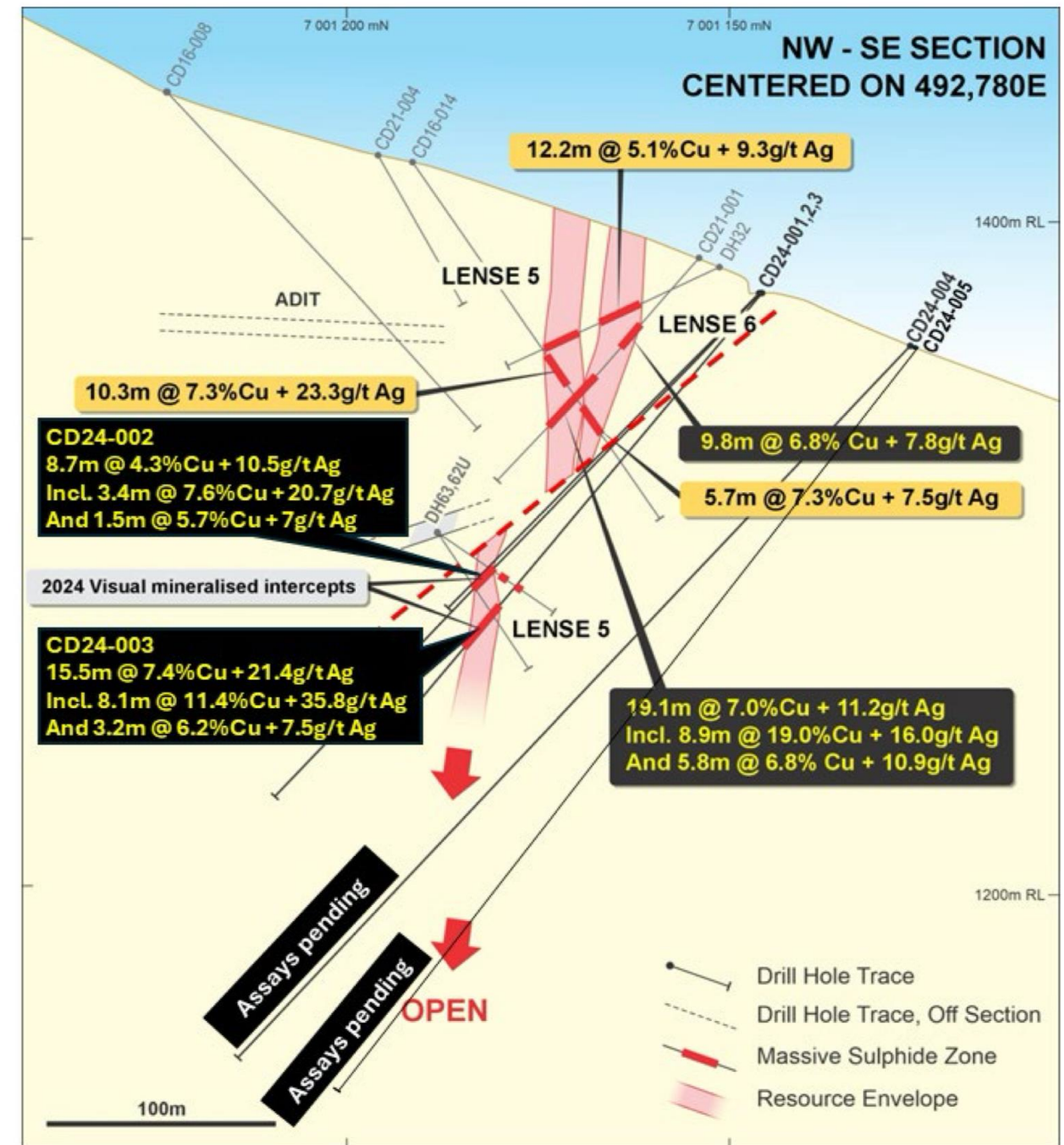
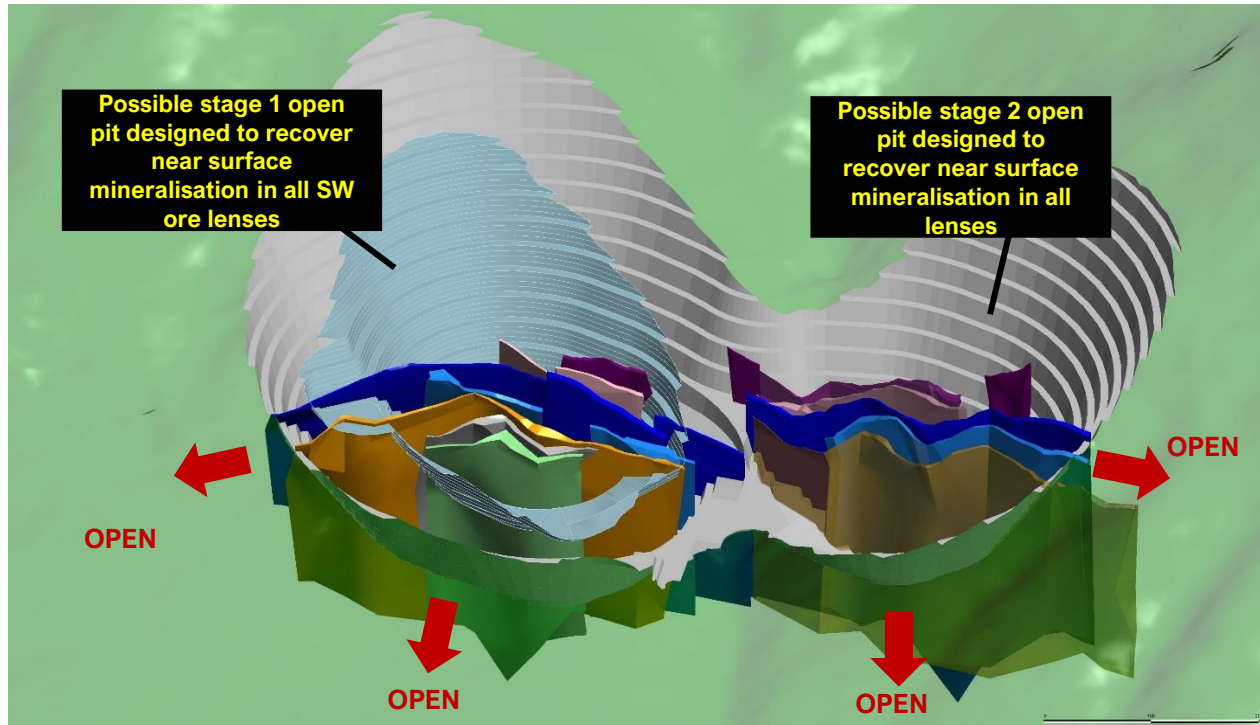


Figure 2. Cross section for holes CD24-001 to CD24-005. Holes CD24-004 and CD24-005 intersected visible copper mineralisation in the down dip extension of mineralisation announced for CD24-003, with assays expected later this quarter. The copper mineralisation remains open at depth.

79
Au
Gold
196.87

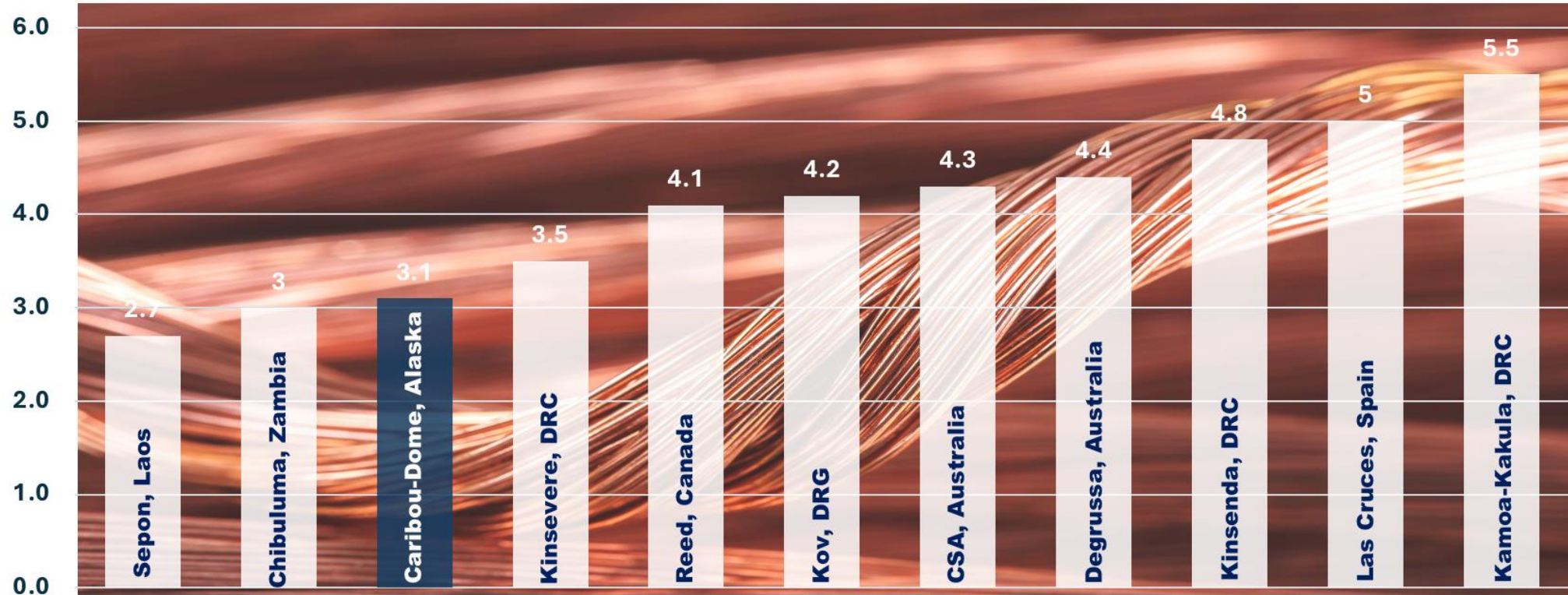
29
Cu
Copper
63.546

47
Ag
Silver
173.07

Massive Sulphide Copper/Silver



World's Highest Grade Copper Deposits vs Caribou Dome



3.1%

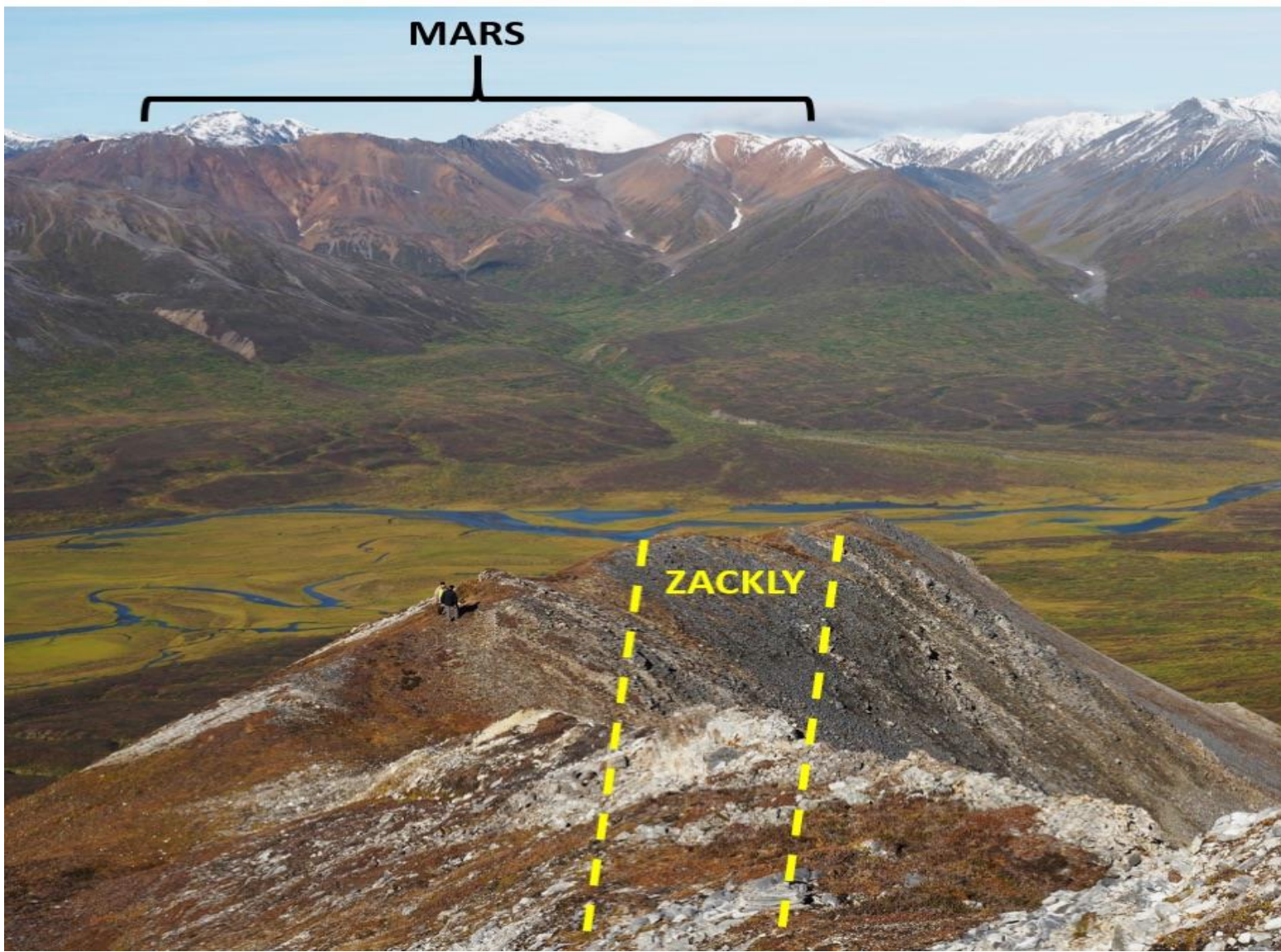
Source: Ivanhoe Mines website PFS. All others from miningforzambia.com "the ten highest grade copper mines in the world" 2019

79
Au
Gold
196.97

29
Cu
Copper
63.546

47
Ag
Silver
107.868

Copper, Gold & Silver at Zackly



79

Au

Gold
196.87

29

Cu

Copper
63.546

47

Ag

Silver
107.87

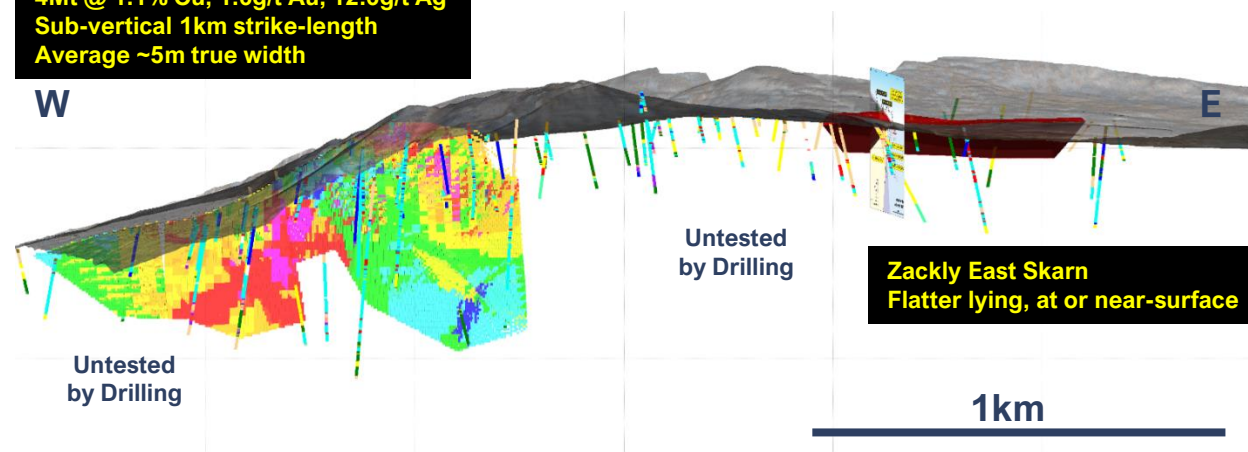
Zackly Deposit: High-grade Copper/Gold

- 5km long skarn system with high-grade gold, copper and silver from surface and open to at least ~400m depth
- Zackly Main Skarn JORC Resource hosts **4.0Mt averaging 1.6g/t Au + 1.1% Cu + 12.6g/t Ag at its western end**
- Subvertical Cu-Au-Ag mineralization could be mined by conventional underground mining methods
- Zackly East mineralisation is generally thicker and may be more suitable for open pit mining
- Substantial exploration upside – **over 2.5km of untested strike-length on known, mineralised structures**

Further upside finding the source VMS and porphyry system feeding Zackly

Long-section View Looking toward the North

Zackly Main Skarn
4Mt @ 1.1% Cu, 1.6g/t Au, 12.6g/t Ag
Sub-vertical 1km strike-length
Average ~5m true width



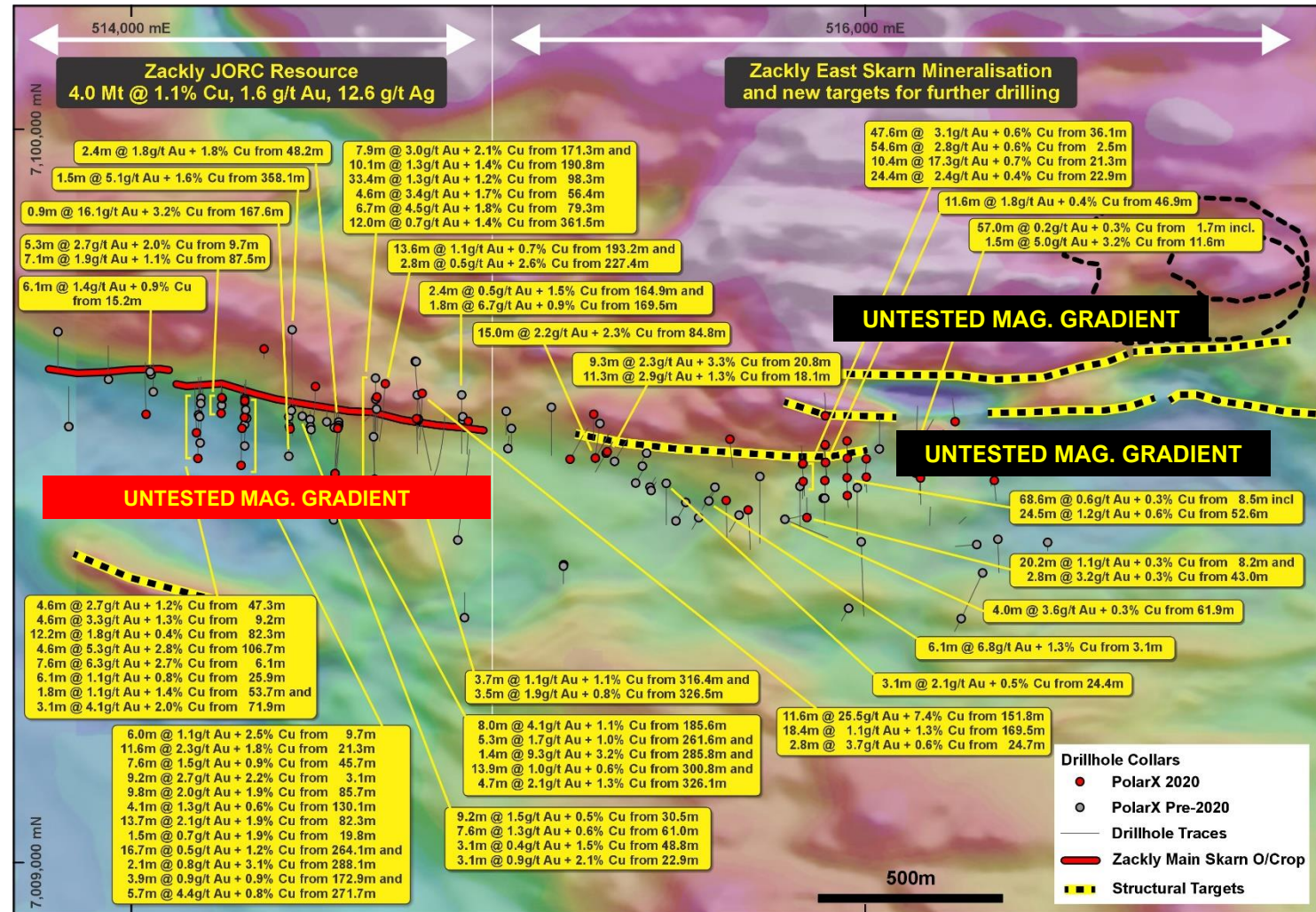
Oblique view along the Zackly system, View looking towards the west, Mars porphyry deposit on the far horizon



Zackly Deposit: 5km of copper/gold strike to be tested

- Zackly JORC resource is all within just 1km of strike and occurs along a structure with a strong magnetic gradient
- Mineralisation confirmed along strike over >800m East extending strike-length to 2.5km
- A further 2.5km of untested strong magnetic gradient to the north and east of current drilling

Porphyry Cu-Au targets to north and east of current drilling



79
Au
Gold
196.97

29
Cu
Copper
63.546

47
Ag
Silver
107.868

Zackly Deposit: Porphyry Copper/Gold potential

500m spaced soil sampling shows 2 highly significant copper anomalies, both >250ppm, ~11km x 6km in size

MARS (Porphyry, skarn)

- 2km x 1.5km soil anomaly with visible copper oxides at surface, up to **3,510ppm Cu and 1.1g/t Au** in soils
- Rock-chip samples up to **6.9g/t Au and 7.4% Cu**
- Co-incident ground geophysics (IP) anomaly
- Discovery hole 19MAR001: **102m @ 0.22% Cu + 0.1g/t Au**

JUPITER (Porphyry)

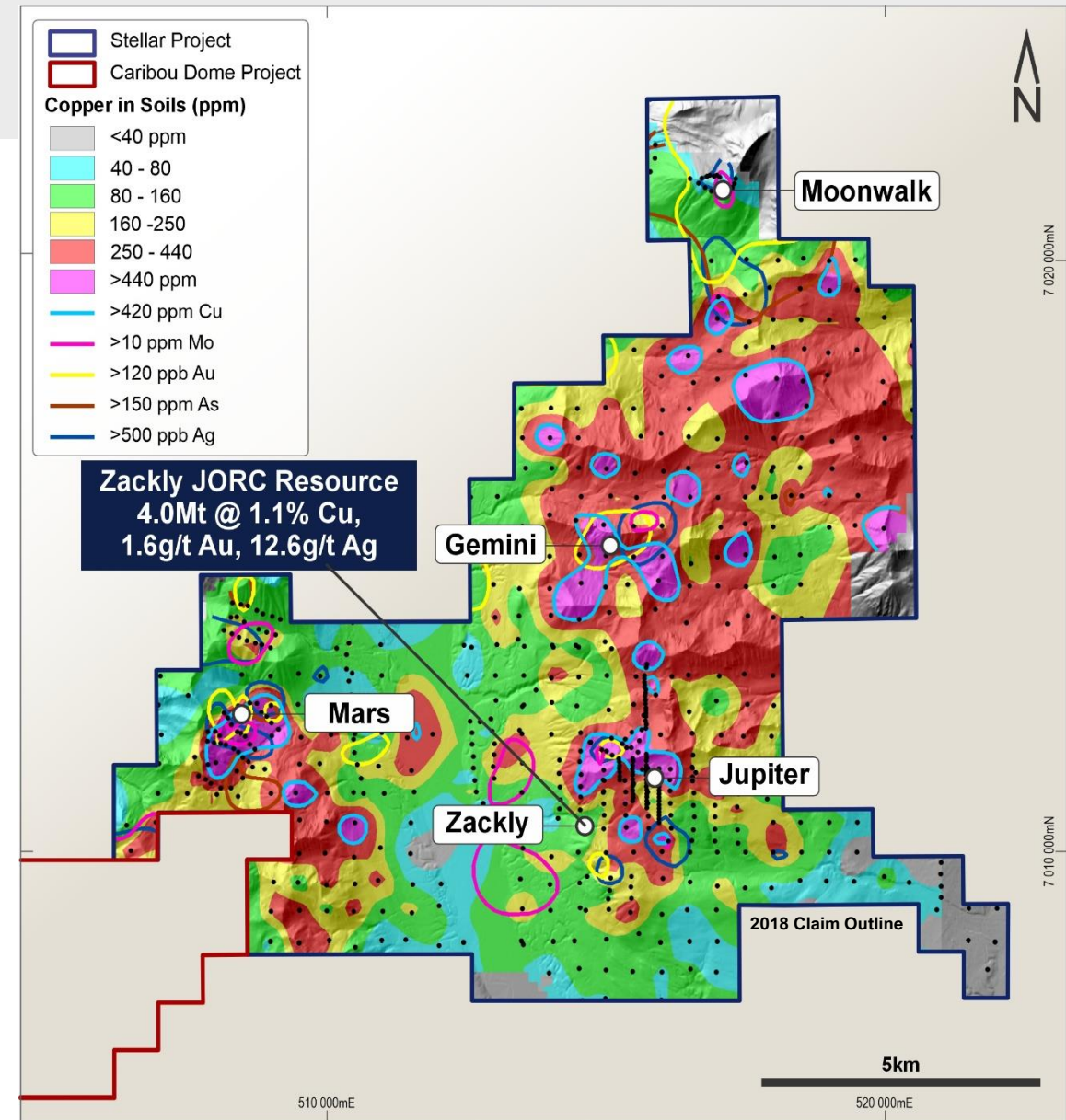
- 2km x 1km soil anomaly at Jupiter with up to **3,850ppm Cu, 0.78 g/t Au**, no drilling, and very limited IP

GEMINI (Porphyry)

- 2km x 2km soil anomaly with up to **1,130ppm Cu, 0.25g/t Au**, no IP or drilling, high-grade copper in sporadic rock-chips

MOONWALK (Tintina-style Au)

- 1km x 1km Au, As, W anomaly in soils, Tintina style Au mineralisation in outcrop - multiple samples >1g/t Au in rock-chips



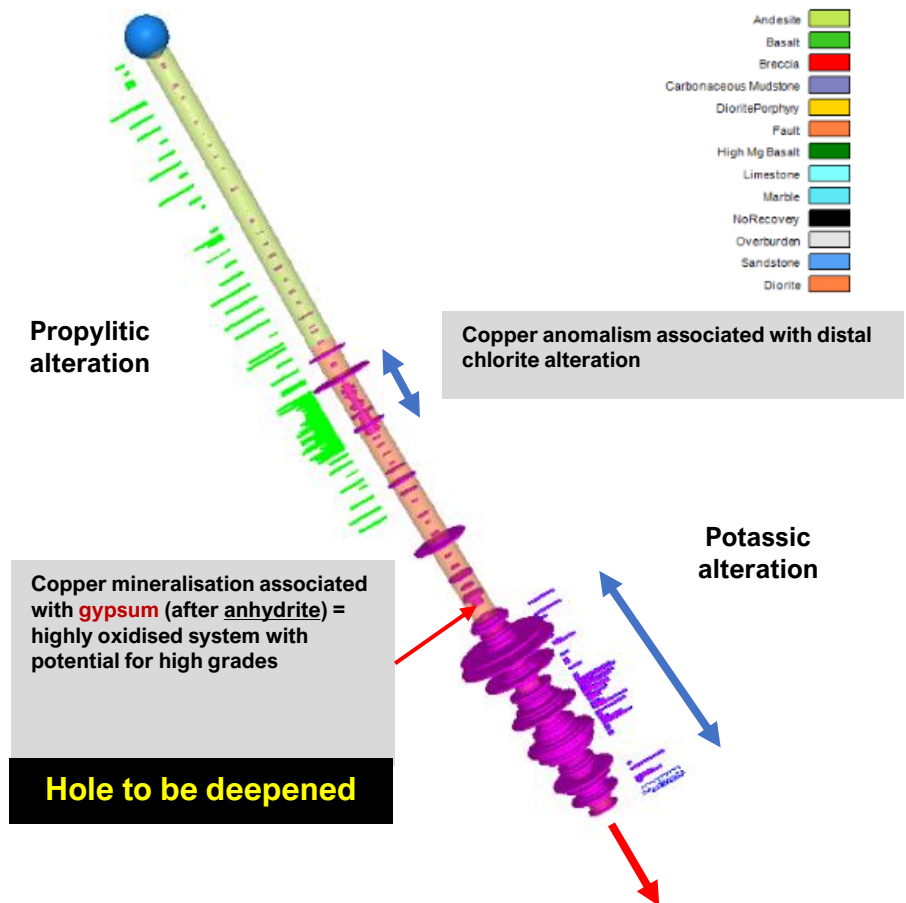
Stellar Property: Mars porphyry Cu-Au discovery

- Porphyry Cu-Au discovered in **first (and only) drill hole** 9MAR001: **102m @ 0.22% Cu + 0.1g/t Au** below a 1200m x 800m Cu-Au-As-Mo soil anomaly
- Associated with porphyry B-Veins in potassic alteration (anhydrite and biotite), **hole ended in mineralisation, but not yet in best part of system**
- Potentially higher-grade core of the intrusion not yet drilled
- Seeking a Major Miner JV earn-in for porphyry exploration / development

High-grade copper mineralisation at surface at the Mars porphyry prospect

3-D drill hole plot showing increasing copper grade (magenta discs) once into the zone of potassic alteration

19MAR001



79
Au
Gold
196.97

29
Cu
Copper
63.546

47
Ag
Silver
173.07

NEVADA: Humboldt Range

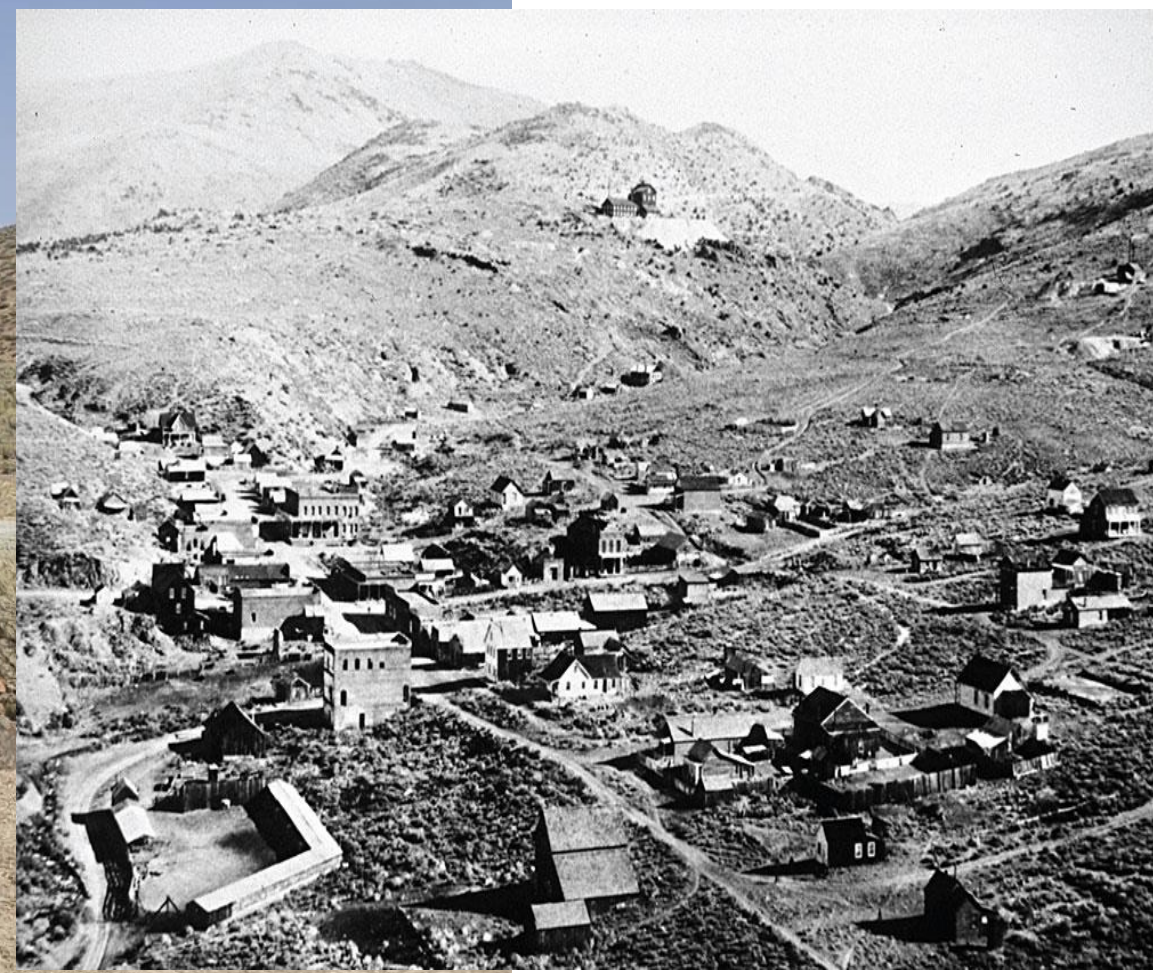


79
Au
Gold
196.97

29
Cu
Copper
63.546

47
Ag
Silver
173.17

Historic Mining Country



79

Au

Gold
196.87

29

Cu

Copper
63.546

47

Ag

Silver
107.868

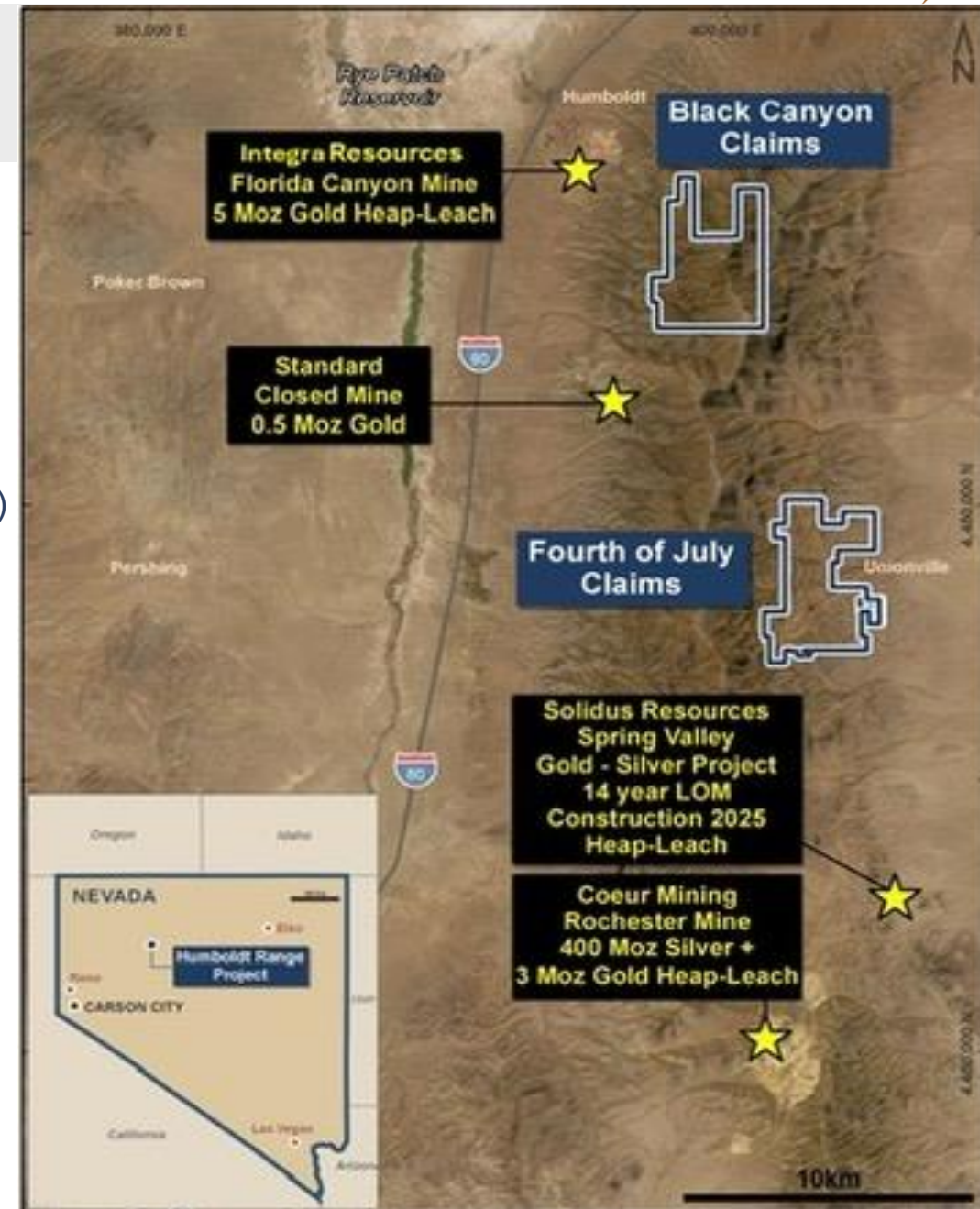
Humboldt Range: High-grade Gold / Silver

Project Highlights

- Nevada delivers +75% of USA's annual gold production
- Surrounded by active multi million-ounce gold and silver mines
- 2 claim blocks: Black Canyon and Fourth of July
- Very high grades of Au and Ag in drilling, outcrop, historic workings (pre-1927)

Exploration Program

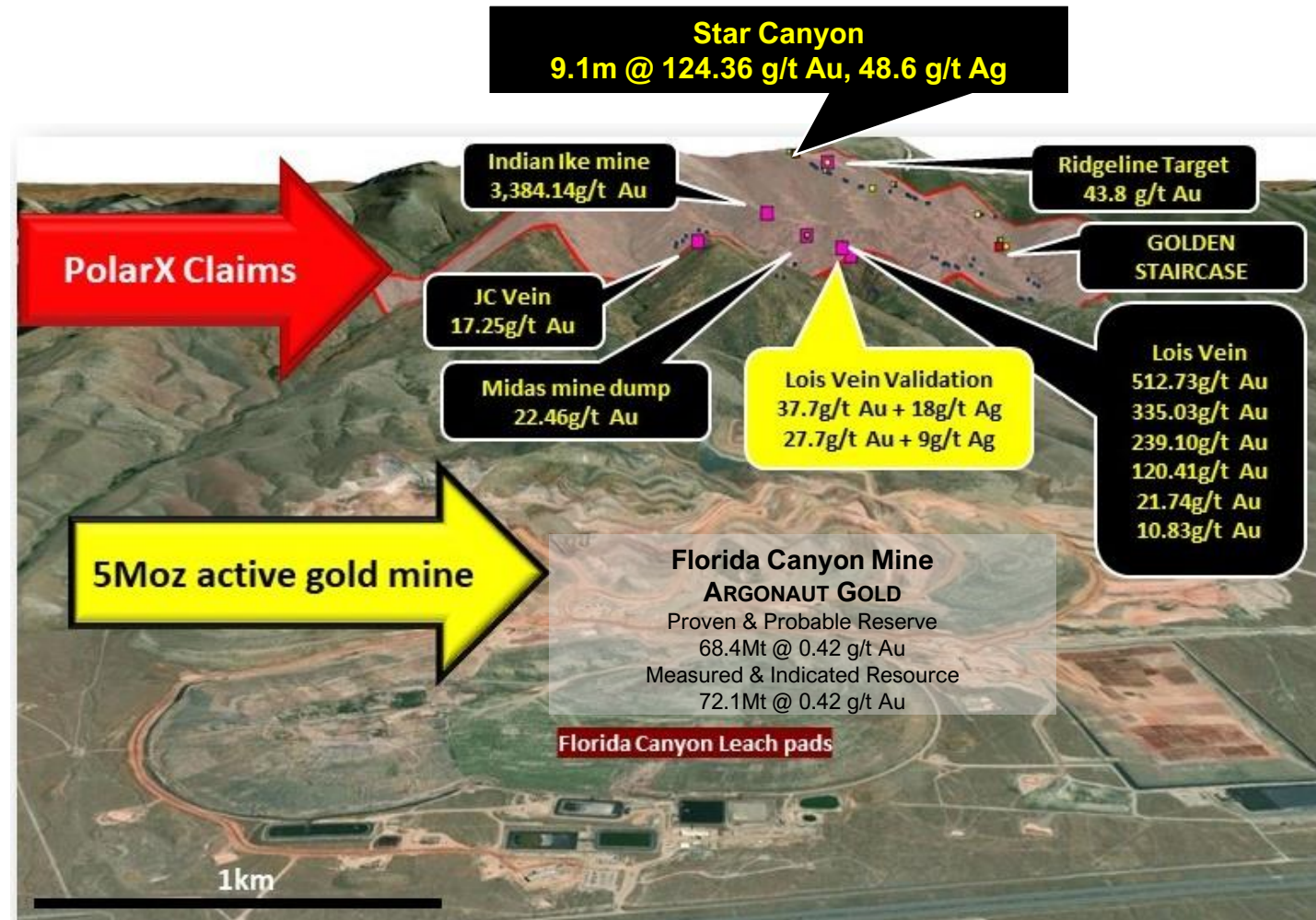
- Very successful maiden RC drilling program at Star Canyon: **9.1m @ 124g/t Au + 49g/t Ag**
- >2,200 soil samples and >150 rock-chip samples collected since April 2021
- similar geology to nearby mines
- Ultra-high-resolution drone images for geological mapping and drill planning
- Rock-chip and channel sampling confirms mine-grade material at surface
- Recent IP program to highlight extensive regional scale anomalies
- Multiple drill targets





Humboldt Range: Black Canyon Claims

- Owned by same family since 1950
- Limited exploration since mining ceased in 1927
- High-grade assays from previous rock-chip sampling of outcropping veins and grab sampling from the dumps of old mine workings with peak values up to:
 - 3,384g/t gold,
 - 2,837g/t silver,
 - 22.9% lead and 3.1% zinc
- Maiden RC drill program at Star Canyon:
9.1m @ 124.36 g/t Au, 48.6 g/t Ag from 27m
- Gold occurs in swarms of 5cm to 1.5m wide epithermal quartz veins and silicified alteration haloes
- Structural corridors between 30m and 275m wide contain numerous (in some cases hundreds of) mineralised quartz veins
- Potential bulk mining targets being drilled



79
Au
Gold
196.97

29
Cu
Copper
63.546

47
Ag
Silver
107.87

Numerous Other Vein Systems – Never Drilled

Ridgeline anomaly veins above
Star Canyon



The Golden Staircase veins
69m @ 1.10 g/t Au, 7.65 g/t Ag (channel)



Channel Cut assayed 69m @1.1g/t gold and 7.65g/t Silver

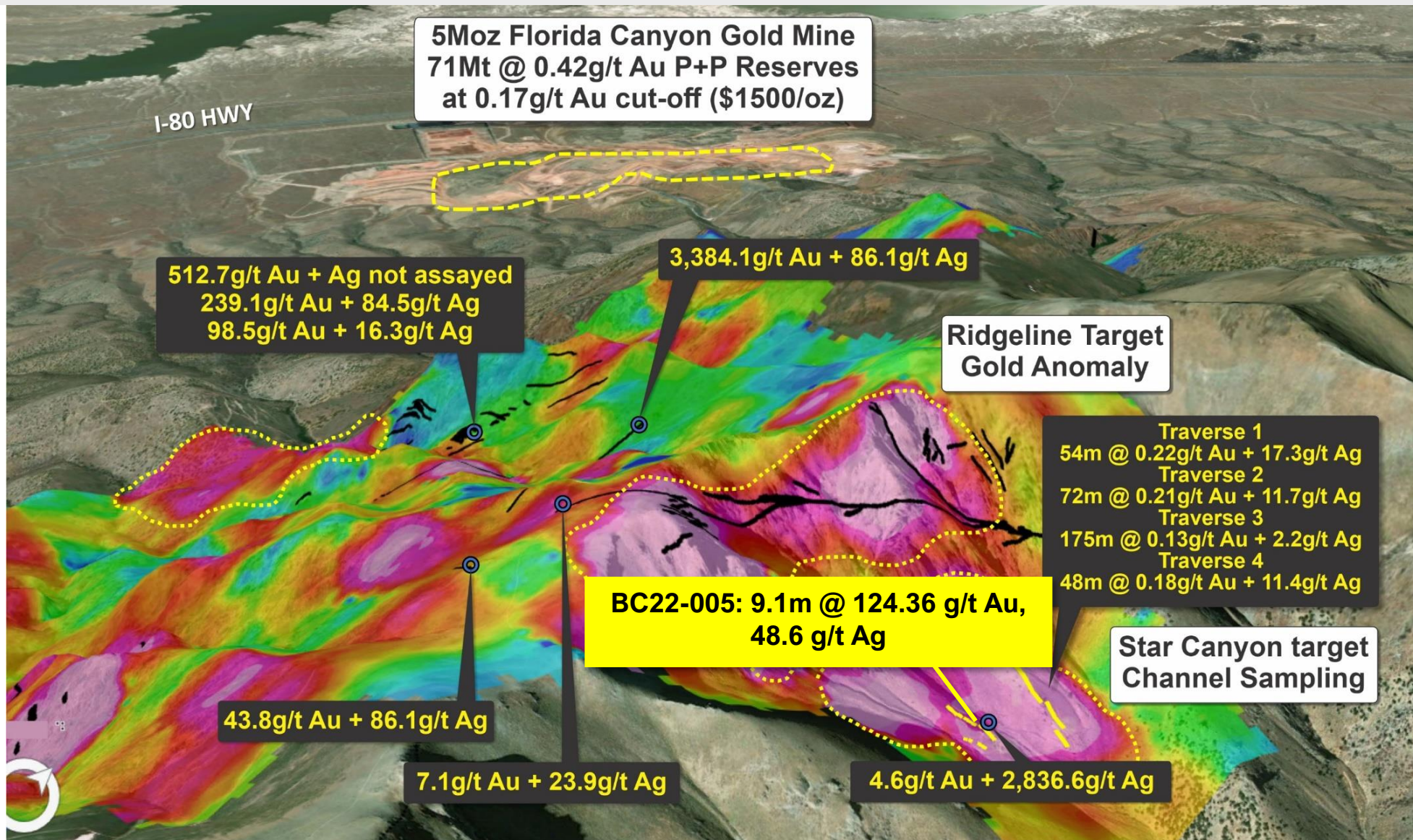


79
Au
Gold
196.87

29
Cu
Copper
63.546

47
Ag
Silver
107.87

Star Canyon: Gold + Silver Everywhere



79

Au

Gold
196.87

29

Cu

Copper
63.546

47

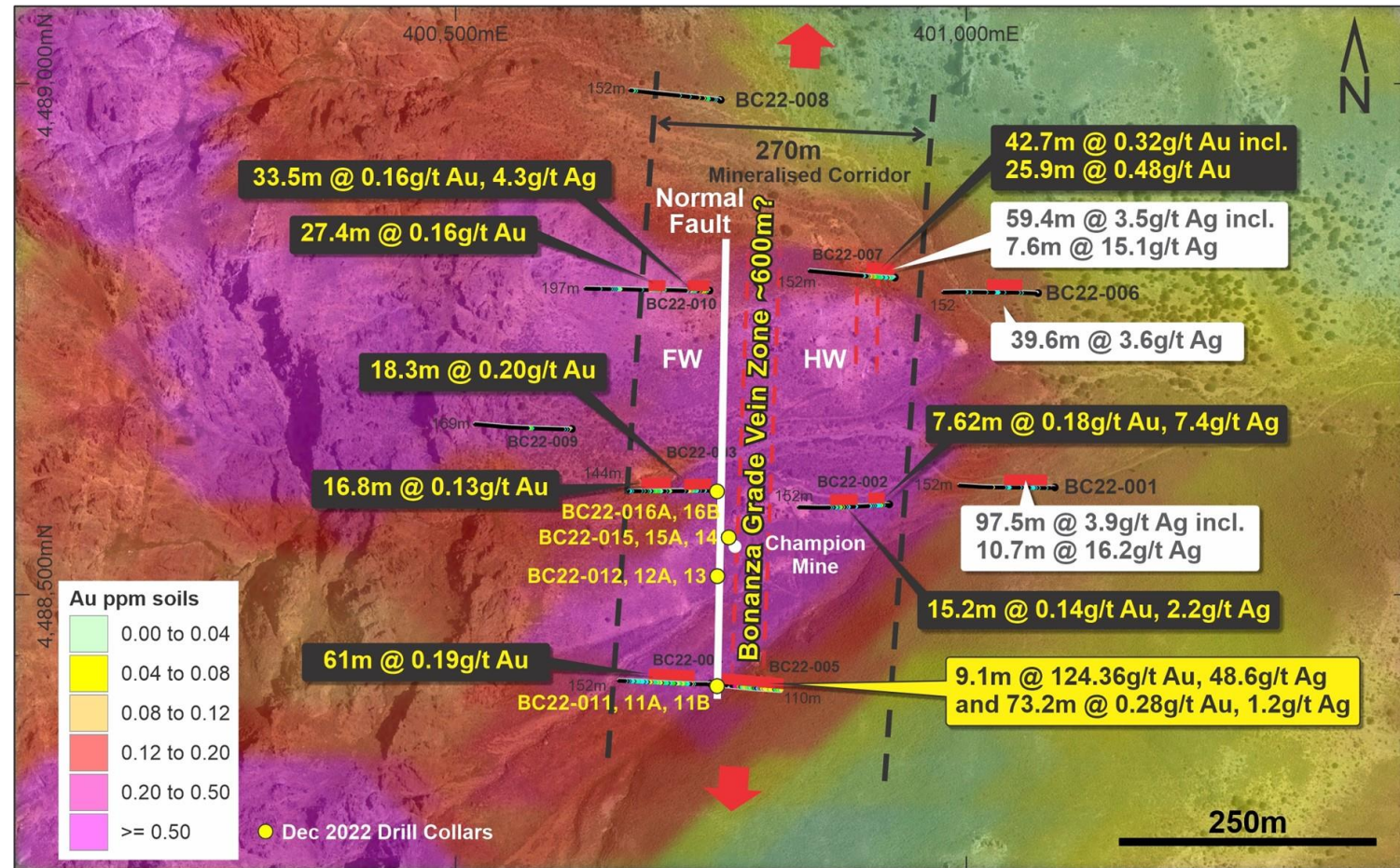
Ag

Silver
107.868

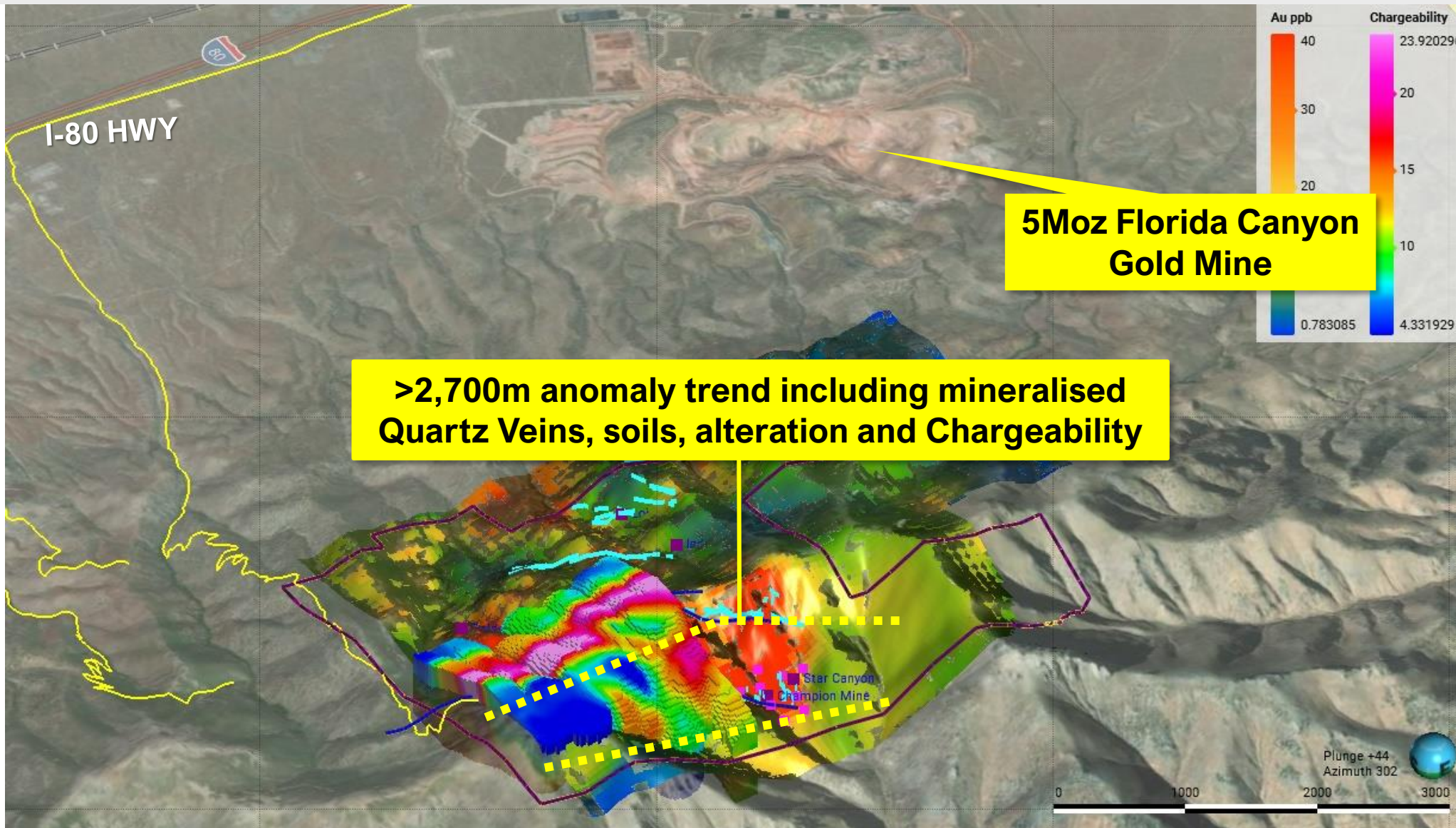
Bonanza veins in regional 'Rochester Rhyolite'

FIRST DRILLING

- Bonanza grades in quartz veins seen in BC22-005
9.1m @ 124g/t Au + 49g/t Ag
- Immediately overlies
73.2m @ 0.3g/t Au + 1.2g/t Ag
- Lower grade mineralisation is in Rochester Rhyolite: silicified volcanics with sulphide alteration
- Structural corridor over 275m wide contains numerous (hundreds of) mineralised quartz veins **at nearby mine grades**
- Potential for open pit bulk mining and more targeted underground mining on the bonanza veins at depth
- Very broad initial drill spacing highlights scale of opportunity

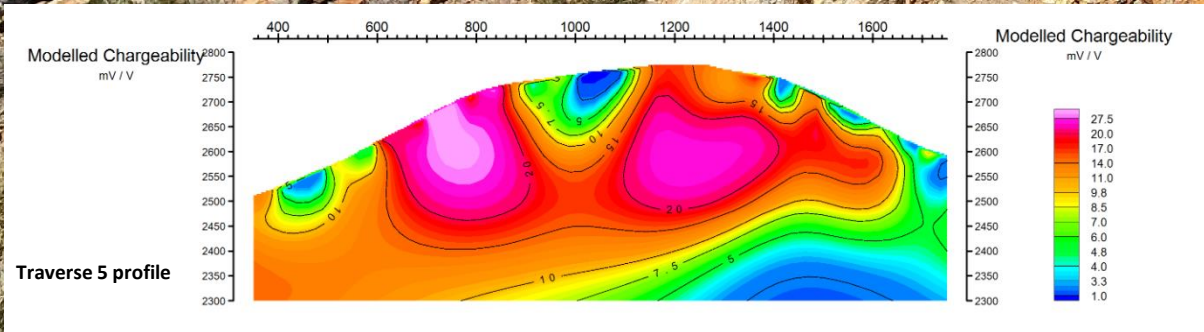
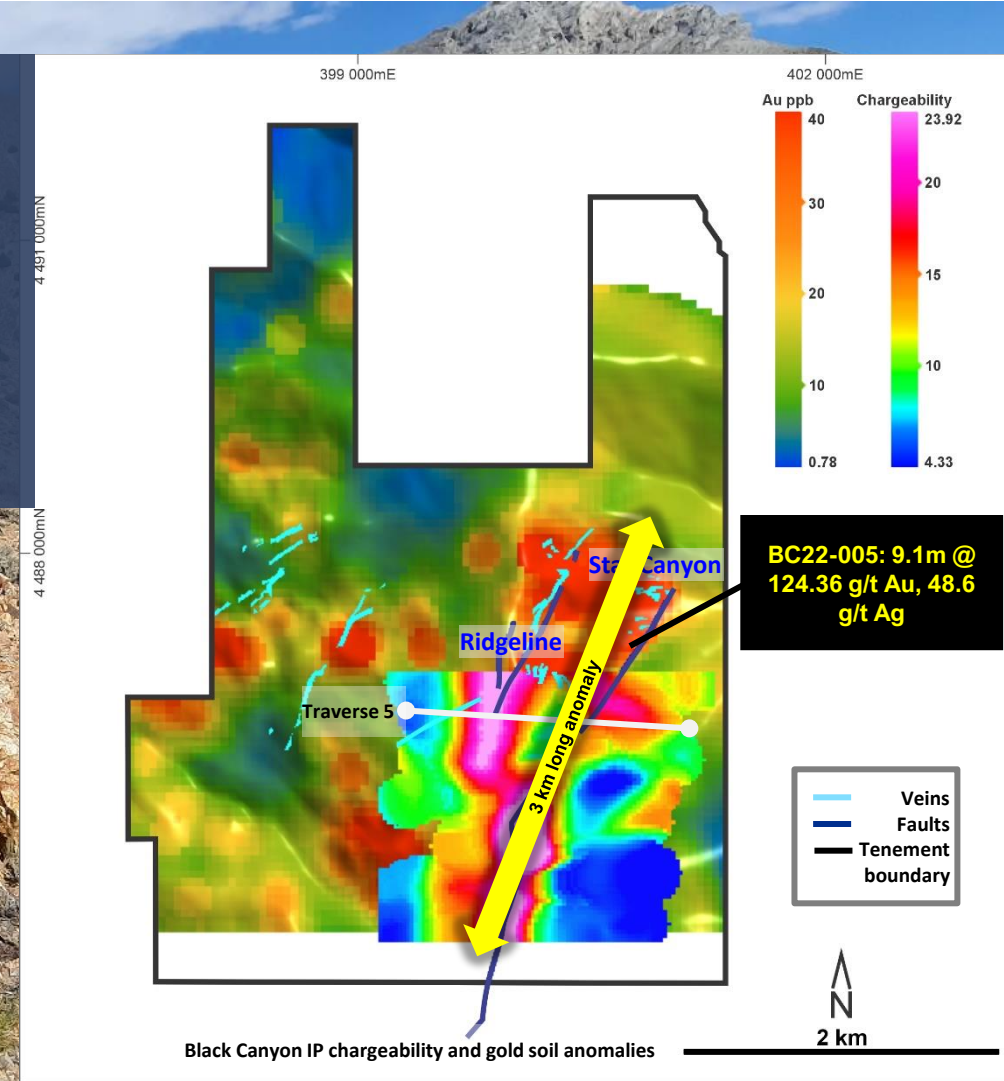


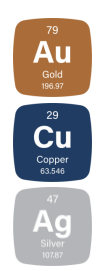
Black Canyon: Scale and Proximity to a 5Moz operating gold mine



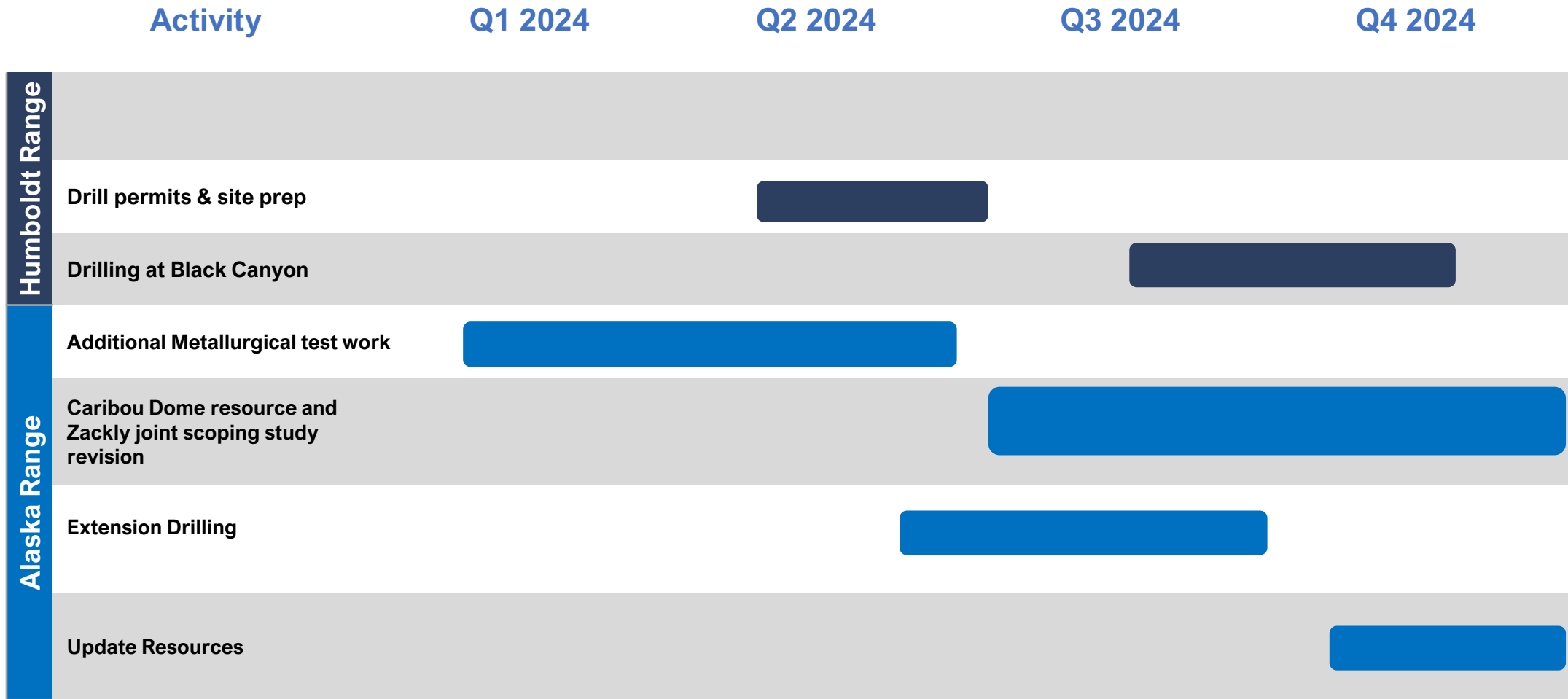
Sampling highlights scale of opportunity

- Detailed soil sampling outlined a 3km long gold anomaly
- Contains outcropping high-grade veins such as the Monster Vein system
- Also contains the Star Canyon area where Rochester Rhyolite mineralisation outcrops
- Wide spaced RC drilling undertaken in Star Canyon
- Successfully discovered both bonanza veins and Rochester Rhyolite style Gold + Silver mineralisation
- Our broad spaced drilling only covers ~15% of the 3km long soil anomaly
- IP survey completed to target sulphide mineralisation concentration





View Forward 2024





Cautionary Statements

This presentation has been prepared by PolarX Limited (“the Company”) to assist in informing interested parties about the Company and its progress. It should not be considered as an offer or invitation to subscribe for or purchase any securities in the Company or as an inducement to make an offer or invitation with respect to securities in the Company. No agreement to subscribe for securities in either Company will be entered into on the basis of this presentation.

You should not act or refrain from acting in reliance on this presentation material. This summary does not purport to be all inclusive or to contain all information which recipients may require in order to make an informed assessment of the Company’s prospects. You should conduct your own investigation and perform your own analysis to satisfy yourself as to the accuracy and completeness of the information, statements and opinions contained in this presentation and making any investment decision.

The Company has not verified the accuracy or completeness of the information, statements and opinions contained in this presentation. Accordingly, to the maximum extent permitted by law, the Company makes no representation and gives no assurance, guarantee or warranty, express or implied, as to, and takes no responsibility and assumes no liability for, the authenticity, validity, accuracy, suitability or completeness of, or any errors in or omission, from any information, statement or opinion contained in this presentation. The contents of this presentation are confidential.

This presentation includes certain “Forward- Looking Statements”. The words “forecast”, “estimate”, “like”, “anticipate”, “project”, “opinion”, “should”, “could”, “may”, “target” and other similar expressions are intended to identify forward looking statements. All statements, other than statements of historical fact, included herein, including without limitation, statements regarding potential mineralisation, resources and reserves, exploration results, future expansion plans and development objectives of PolarX involve various risks and uncertainties. There can be no assurance that such statements will prove to be accurate and actual results and future events could differ materially from those anticipated in such statements.

Previously Reported Results

There is information in this presentation relating to:

- (i). the Mineral Resource estimate for the Zackly deposit, which was previously announced on 17 October 2022 ;
- (ii). the Mineral Resource estimate for the Caribou Dome deposit, which was previously announced on 14 June 2023; and
- (iii). exploration Results which were previously announced on 15 August 2018, 25 September 2018, 5 November 2018, 12 November 2018, 29 January 2019, 25 March 2019, 5 August 2019, 1 October 2019, 21 October 2019, 19 November 2019, 20 January 2020, 14 September 2020, 9 October 2020, 21 October 2020, 17 November 2020, 17 December 2020, 11 January 2021, 2 February 2021, 4 February 2021, 6 May 2021, 22 June 2021, 6 July 2021, 19 August 2021, 31 August 2021, and 5 October 2021, 23 February 2022 and 3 September 2024.

Other than as disclosed in those announcements, the Company confirms that it is not aware of any new information or data that materially affects the information included in the original market announcements, and that all material assumptions and technical parameters have not materially changed. The Company also confirms that the form and context in which the Competent Person’s findings are presented have not been materially modified from the original market announcements.

All references to the 2024 Scoping Study and its outcomes in this presentation relate to the announcement of 18 January 2024 titled “2024 Scoping Study Alaska Range Copper Gold Project”. Please refer to that announcement for full details and supporting information.

All references to the 2023 Scoping Study and its outcomes in this presentation relate to the announcement of 28 August 2023 titled “2023 Scoping Study Alaska Range Copper Gold Project”. Please refer to that announcement for full details and supporting information.

Alaska Range Project Resource Estimates (JORC 2012), 0.5% Cu cut-off grade									
	Category	Million Tonnes	Cu %	Au g/t	Ag g/t	Contained Cu (t)	Contained Cu (M lb)	Contained Au (oz)	Contained Ag (oz)
ZACKLY	Inferred	1.5	0.9	1.2	10.4	14,300	32	58,000	513,000
	Indicated	2.5	1.2	1.9	13.9	30,700	68	155,000	1,120,000
	TOTAL	4.0	1.1	1.6	12.6	45,000	100	213,000	1,633,000
CARIBOU DOME	Measured	1.0	3.9	-	8.6	39,800	88	-	284,000
	Indicated	3.2	3.3	-	6.5	105,175	232	-	662,800
	Inferred	3.0	2.6	-	5.7	79,400	175	-	552,000
	TOTALS	11.2				269,375	595	213,000	3,131,000

79
Au
Gold
196.97

29
Cu
Copper
63.546

47
Ag
Silver
173.07

ASX: PXX





Highlights

Tier 1 copper, gold and silver assets

Alaska and Nevada = within world's top mining precincts

Top 40 shareholders own over 65% of PolarX

Northern Star Resources own 16% and also mine in Alaska

Mining Scoping Study combines Zackly and Caribou Dome = A\$625m NPV

Massive upside in Nevada adjacent to active mines

Management with a record of delivering increased shareholder value

For more information contact or alternatively visit our website;

Mark Bojanjac
Executive Chairman
markb@polarx.com.au
+61 411 428746

Dr. Jason Berton
Managing Director
jasonb@polarx.com.au
+61 402 199166

Peter Nesveda
International Investor Relations and Corporate Affairs
peter@intuitiveaustralia.com.au
+61 412 357375



ASX: PXX
www.polarx.com.au