

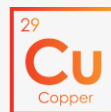
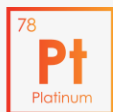
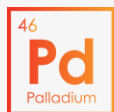


The premier palladium-nickel-copper development project in the western world

Resources Rising Stars Gold Coast

4 SEPTEMBER 2024

ASX:CHN



Chalice Mining – a **unique critical minerals** explorer-developer, highly leveraged to palladium price recovery



Tier 1 scale Resource in WA – the Gonneville Project

- **100% ownership of one of the largest undeveloped PGE-Ni-Cu-Co** (critical minerals) resources in the western world
- **17Moz of Pd-Pt-Au (3E), 960kt Ni, 540kt Cu, 96kt Co** contained in Gonneville Resource, starting at surface¹
- **Pre-Feasibility Study** and **regulatory approvals** underway



Compelling value, leverage and upside

- **High leverage to Pd, Ni price recovery from cyclical lows**
- Gonneville predicted to become the **lowest cost PGE mine** in the western world (after Ni-Cu-Co credits) – 2nd quartile on cost curve
- **~10,000km² of surrounding exploration licences in new province**



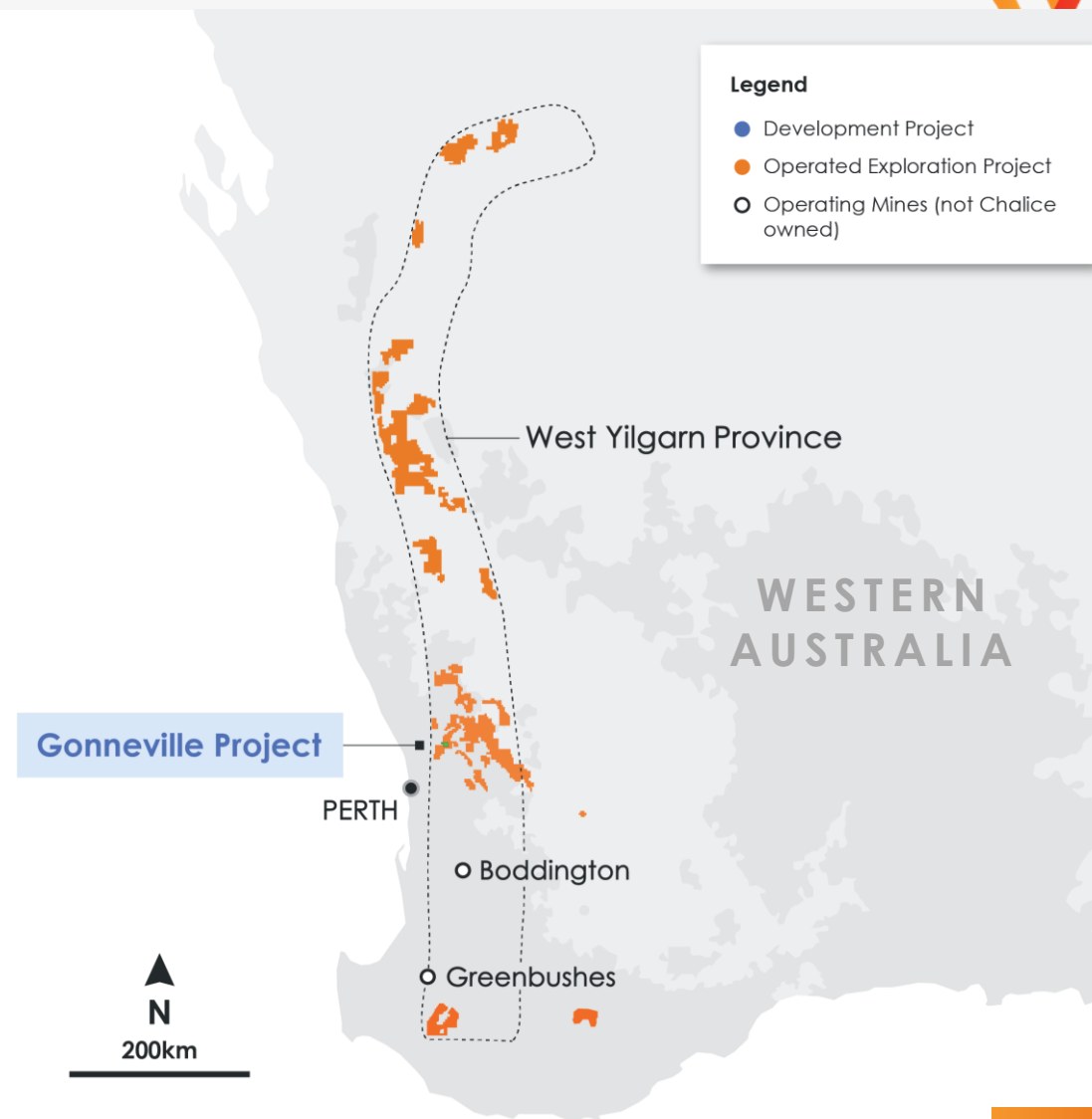
Strategic MOU with Mitsubishi Corporation

- Non-binding MOU with top tier development partner
- Intention to formalise a **potential binding partnership post PFS**



Strong financial position

- **~A\$111M in cash and listed investments** and no debt²



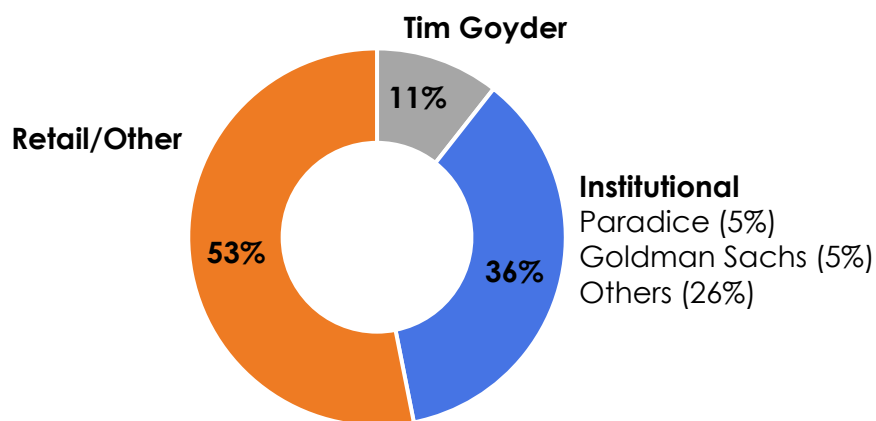
1. 660Mt @ 0.79g/t Pd+Pt+Au (3E), 0.15% Ni, 0.083% Cu, 0.015% Co (refer to the Mineral Resources Estimate contained in Appendix for tonnes and grade by confidence category)

2. Includes ~\$22M in listed Investments at 30 June 2024

Chalice is an ASX300 listed specialist critical minerals explorer-developer with a uniquely **strong financial position** and institutional register



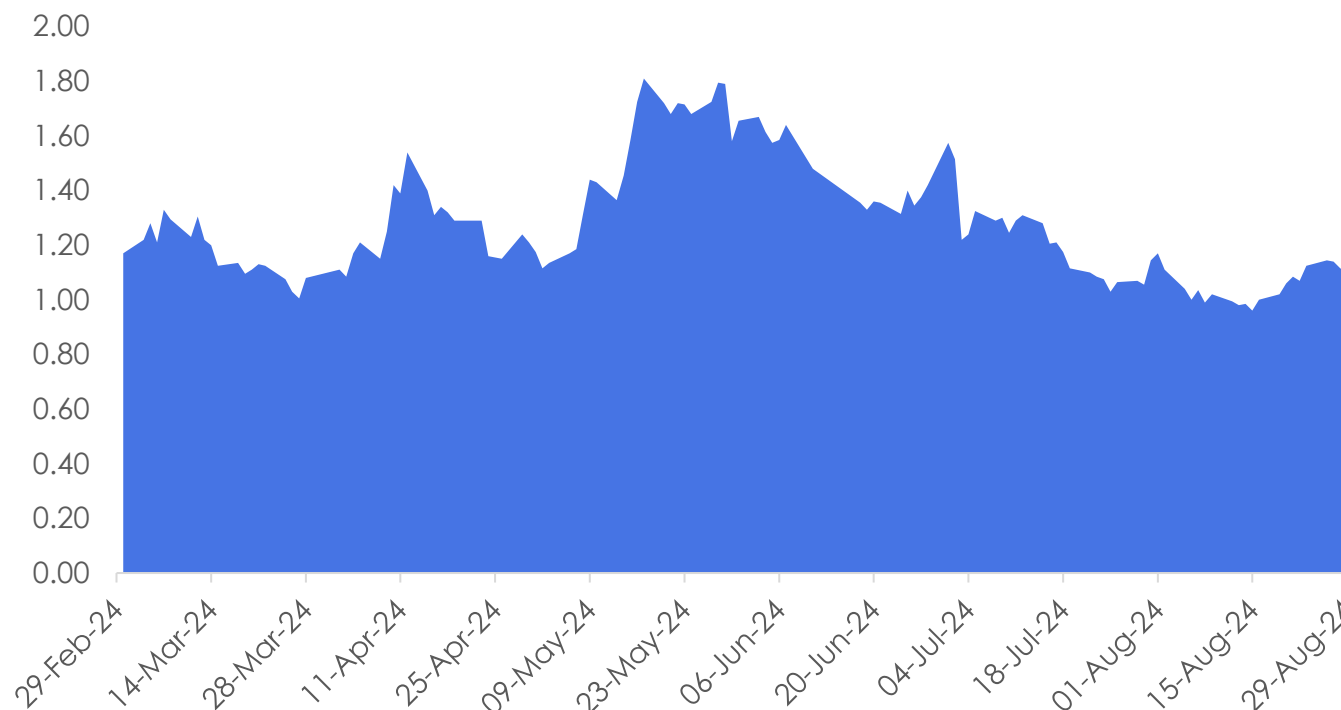
Major shareholders³



Capital structure

Shares on issue	389M
Market capitalisation	A\$430M¹
Trading liquidity	~4M shares/day
Cash balance	A\$89M²
Listed investments	A\$22M²
Enterprise value	A\$341M¹

ASX:CHN 6-month performance



Research coverage



1. As of 28 August 2024; 2. As of 30 June 2024. 3. Major shareholder information is as disclosed in the last substantial shareholder notice provided to the Company. Note: Arctis Global disclosed a long equity derivative position of 46,728,282 shares on 10 Nov 2022.

Why palladium and platinum? **This was a common sight in the 90's,**
prior to the adoption of catalytic converters



Los Angeles 1998



Palladium and platinum based catalytic converters have driven a **remarkable improvement in air quality and health globally**



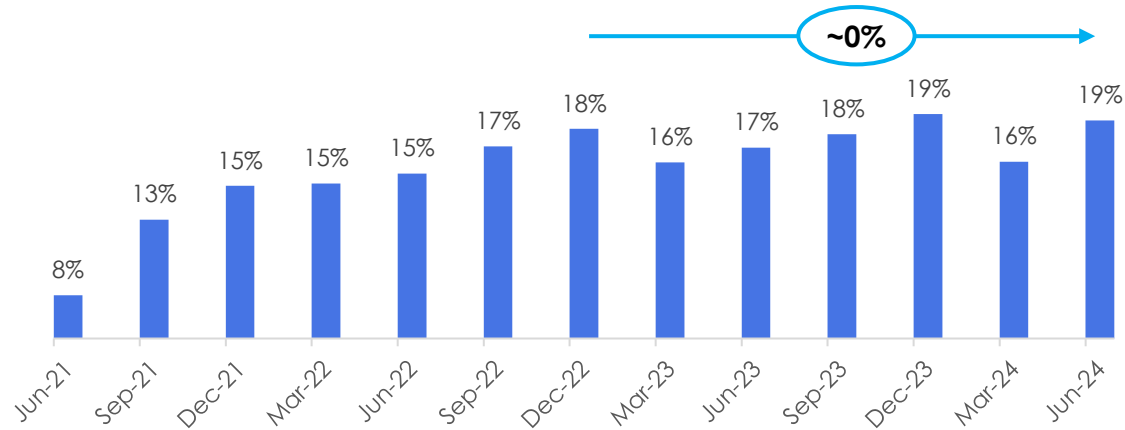
Los Angeles 2020



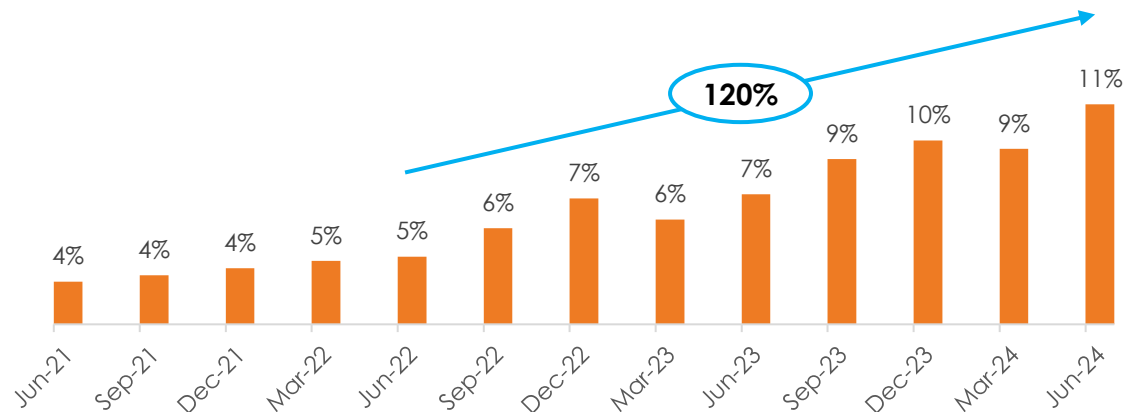
Why palladium? **Battery electric vehicle adoption has reached a plateau** and hybrid EV sales are growing rapidly



Battery electric vehicle (BEV) market share (China, US, Europe)



Hybrid electric vehicle (HEV) market share (China, US, Europe)



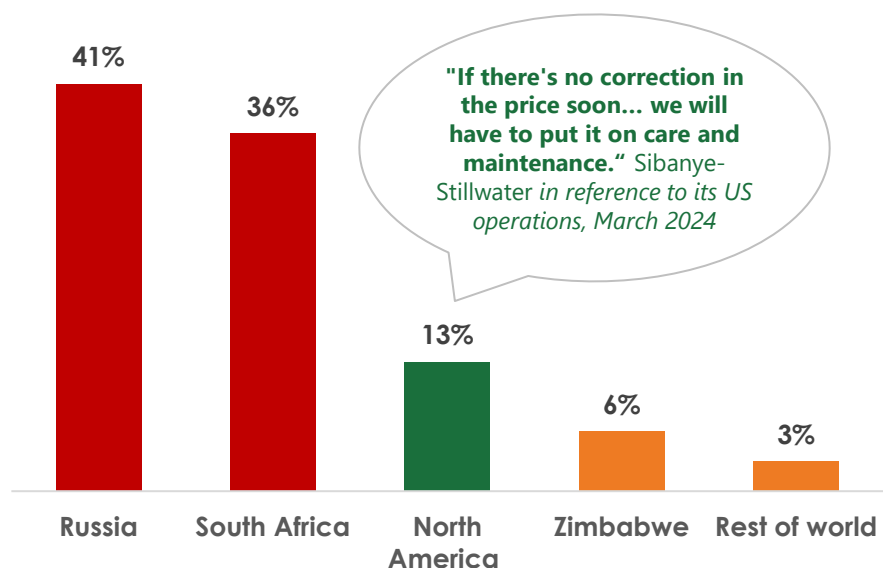
- Western car manufacturers are scaling back their BEV growth ambitions, and **scaling up hybrid production** to meet changing consumer preferences
- **57% of BYDs sales in Q2 2024 were hybrids** – it is not just a western trend
- **46%** of current US BEV owners considering switching back to ICE
- **More palladium required in HEVs** than internal combustion engine vehicles (ICE)
- **The hybrid growth story is not yet reflected in consensus palladium demand forecasts**

Why palladium? **Supply is concentrated in Russia and South Africa** – supply risks are high, disruptions are common and recycling is subdued

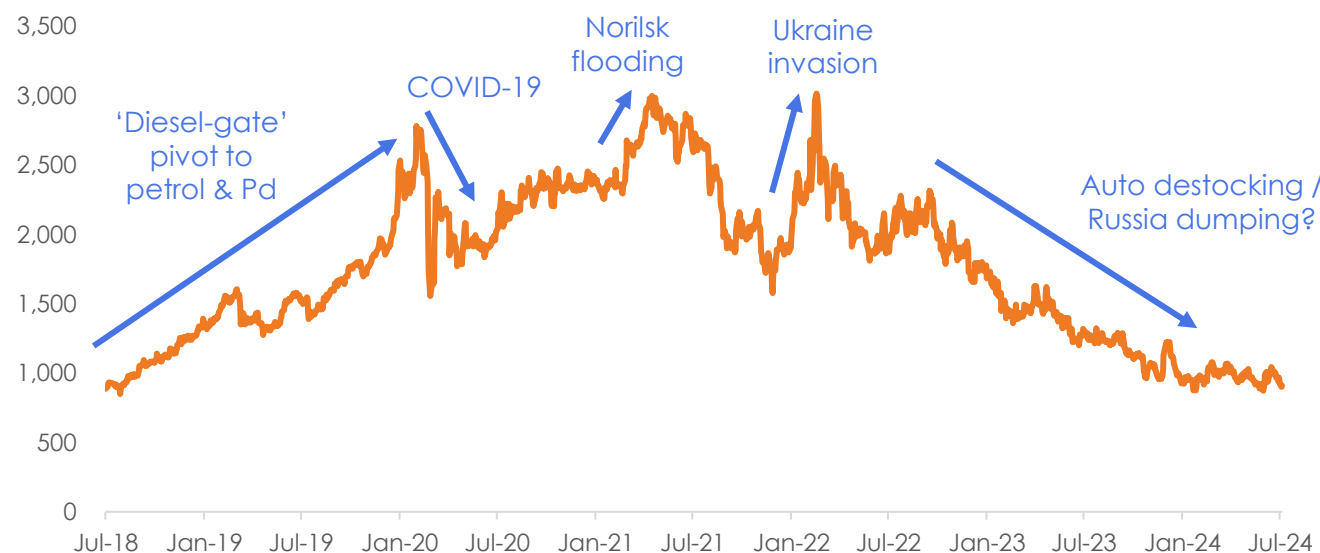


- Palladium production is dominated by **ageing, deep, under-invested mining complexes in Russia and South Africa**
- Western mines are rapidly becoming uneconomic and are being shut, making **supply concentration worse**
- Weak prices and lack of investment is driving a rapid decline in **recycling volumes** (not growth as most are forecasting)

Global Palladium Supply Market Share (2023)



LBMA Palladium price (US\$/oz)

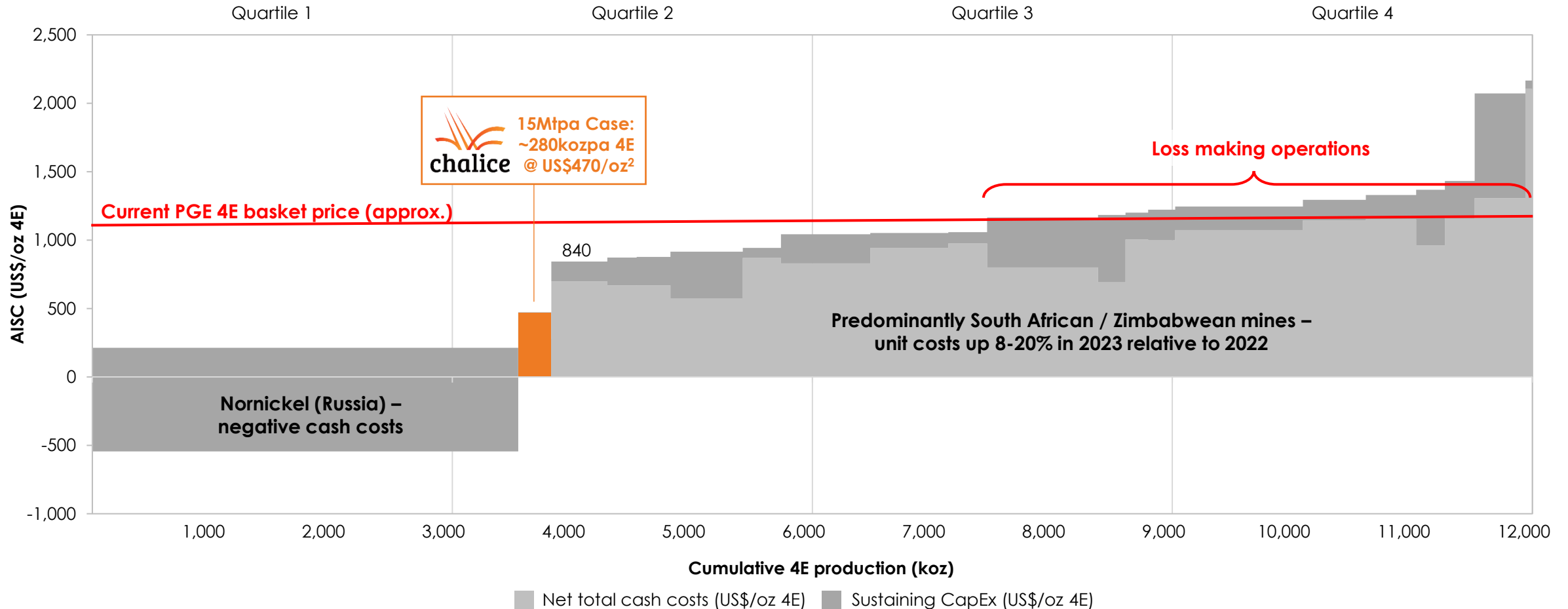


Gonneville is the only palladium project in the western world with scale – a unique investment opportunity

PGE prices are **deep into the cost curve and unsustainable** – given strength of demand, pricing could revert to incentive levels in near term



PGE industry all-in sustaining cost curve (cash costs plus sustaining CapEx), net of by-product credits, US\$/oz 4E 2023A¹



Source: April 2024 SFA (Oxford) figures used for 2023 realised 4E cost curve data. Note: 1. 4E cost curve positioning assumes SFA Oxford 2023 actual by-product commodity prices of: Copper prices of: US\$8,486/t, Nickel US\$21,505/t, Iridium US\$4,682/oz, Ruthenium US\$464/oz, Chrome 42% CIF US\$312/t. Chalice internal Cobalt prices of US\$40,000/t have been assumed given not disclosed in SFA data. ZAR:USD exchange rate of 18.47 assumed. 2. AISC adjusted to reflect SFA Oxford 2023 actual by-product commodity prices (vs US\$360/oz on August 2023 Scoping Study prices)

Gonneville PGE-Ni-Cu-Co Project Overview

A new long-life, low-cost, low-carbon *critical minerals* project in Western Australia

Strategic MOU in July 2024 with Mitsubishi Corporation

Tier 1 development partner, intention to formalise a potential binding partnership post PFS¹



Tier 1 scale sulphide Resource

17Moz of Pd-Pt-Au (3E), 960kt Ni, 540kt Cu, 96kt Co contained²

Unique critical minerals asset

Revenue split of **~50% Pd, ~25% Ni, ~15% Cu, ~10% Au/Pt/Co**³

Competitive PGE cost profile

Predicted to become **lowest cost PGE producer in western world** (2nd Quartile)

Low-risk development location

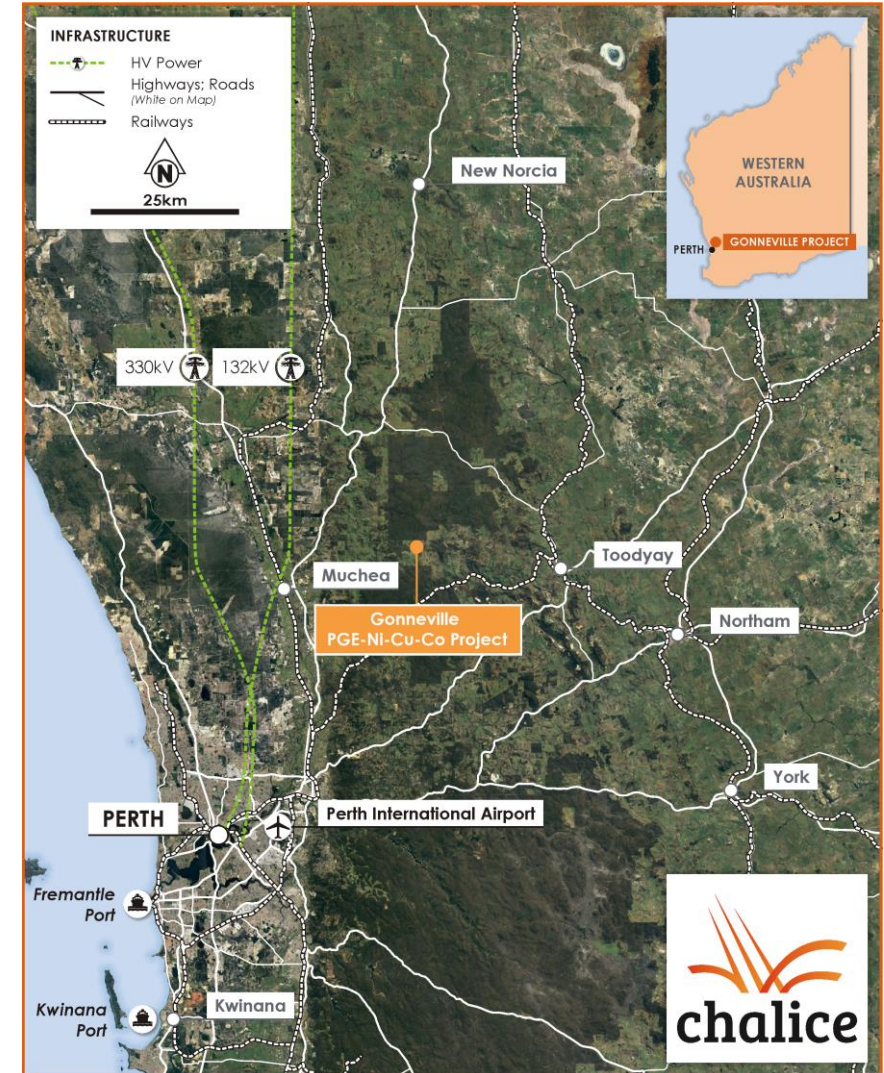
Mine infrastructure on **~22km² of CHN-owned farmland**

Shallow open-pit mining

Resource starts at surface, **high-grade feed in early years**

Sulphide mineralogy

Ability to produce **separate Cu-PGE, Ni-Co-PGE concentrates** and leach Pd from flotation tails



1. Non-binding MOU executed on 3 July 2024 – refer to ASX Announcement for full details
2. For tonnes and grade by confidence category and metal equivalent assumptions, refer to the Mineral Resources Statement in Appendix.
3. Based on the August 2023 Scoping Study 15Mtpa case adjusted for current consensus metal prices

The **rare, tier-1 scale** Gonneville Resource has **high-grade optionality** and **compelling growth potential**



High Grade Mineral Resource Estimate¹:

- 59Mt @ 2.0g/t 3E (Pd+Pt+Au), 0.20% Ni, 0.21% Cu, 0.019% Co
- **3.8Moz 3E, 120kt Ni, 120kt Cu** and **11kt Co** contained
- **Starts at surface, open at depth**

Mineral Resource Estimate¹:

- 660Mt @ 0.79g/t 3E (Pd+Pt+Au), 0.15% Ni, 0.08% Cu, 0.015% Co
- **17Moz 3E, 960kt Ni, 540kt Cu** and **96kt Co** contained

Gonneville is highly **leveraged to commodity prices and metallurgical recoveries**

Project scale expected to increase over time according to prevailing macro-economic conditions:

- As prices increase, cut-off grade can be reduced, more tonnes economic to process

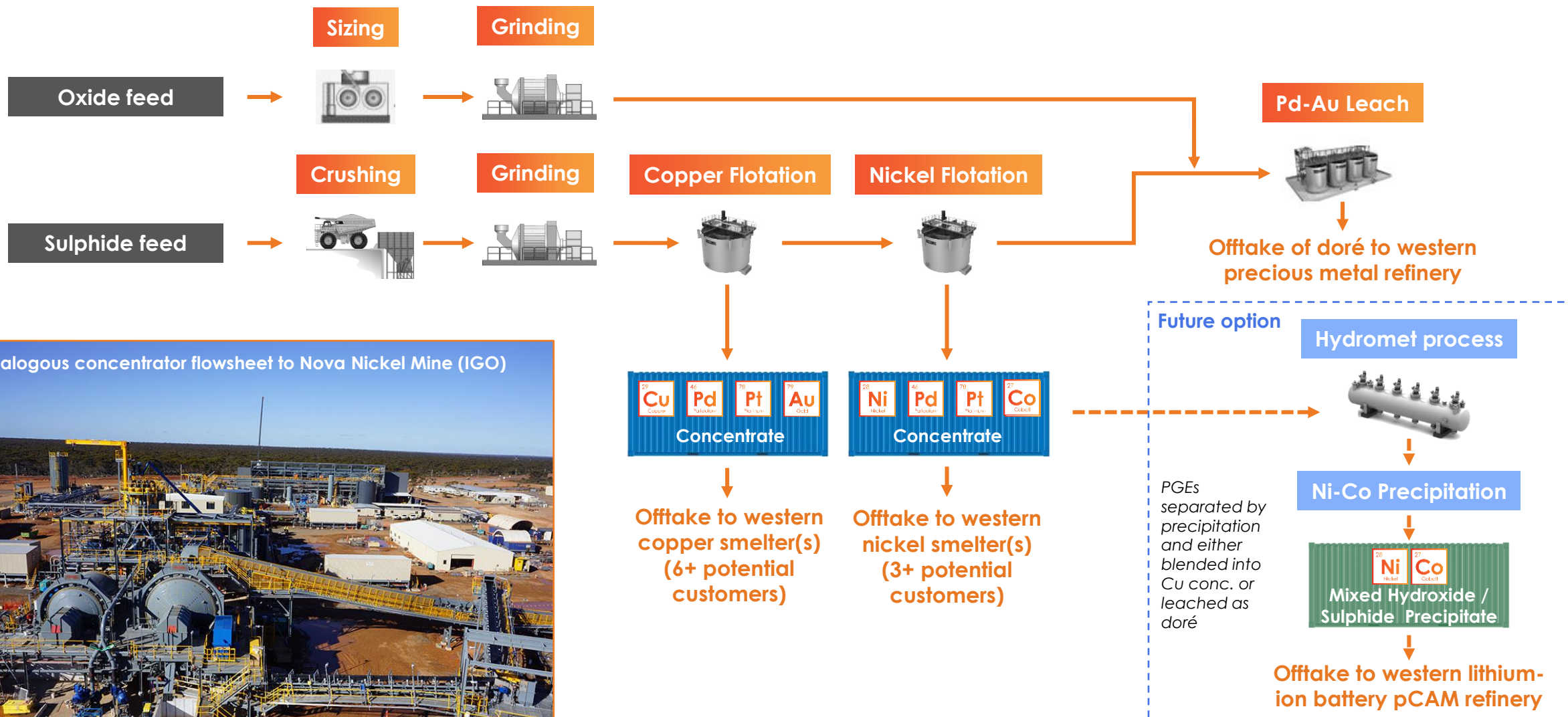
Gonneville NSR Grade-Tonnage table²

NSR Cut-off in-pit	NSR Cut-off in MSO	Total Mass	Grade									
			A\$/t	A\$/t	(Mt)	3E (g/t)	Pd (g/t)	Pt (g/t)	Au (g/t)	Ni (%)	Cu (%)	Co (%)
15	110	690				0.75	0.59	0.14	0.02	0.15	0.082	0.015
25	110	640				0.78	0.62	0.14	0.02	0.15	0.085	0.015
35	110	530				0.85	0.67	0.15	0.03	0.16	0.092	0.015
45	110	390				0.97	0.76	0.17	0.03	0.16	0.11	0.016
55	110	270				1.1	0.88	0.20	0.04	0.17	0.12	0.017
65	110	180				1.3	1.0	0.23	0.05	0.18	0.14	0.017
75	110	130				1.5	1.2	0.27	0.06	0.19	0.16	0.018
85	110	95				1.7	1.3	0.30	0.06	0.19	0.18	0.018
95	110	73				1.8	1.4	0.34	0.07	0.20	0.19	0.019
105	110	58				2.0	1.6	0.37	0.08	0.20	0.21	0.019
115	110	47				2.2	1.7	0.40	0.09	0.21	0.22	0.019
125	110	40				2.3	1.8	0.42	0.10	0.21	0.23	0.019
135	110	34				2.4	1.9	0.45	0.10	0.21	0.24	0.019
145	110	30				2.5	1.9	0.47	0.11	0.22	0.25	0.019
155	110	27				2.6	2.0	0.48	0.11	0.22	0.26	0.019

1. For tonnes and grade by confidence category and NSR assumptions, refer to the Mineral Resource Estimate table in Appendix

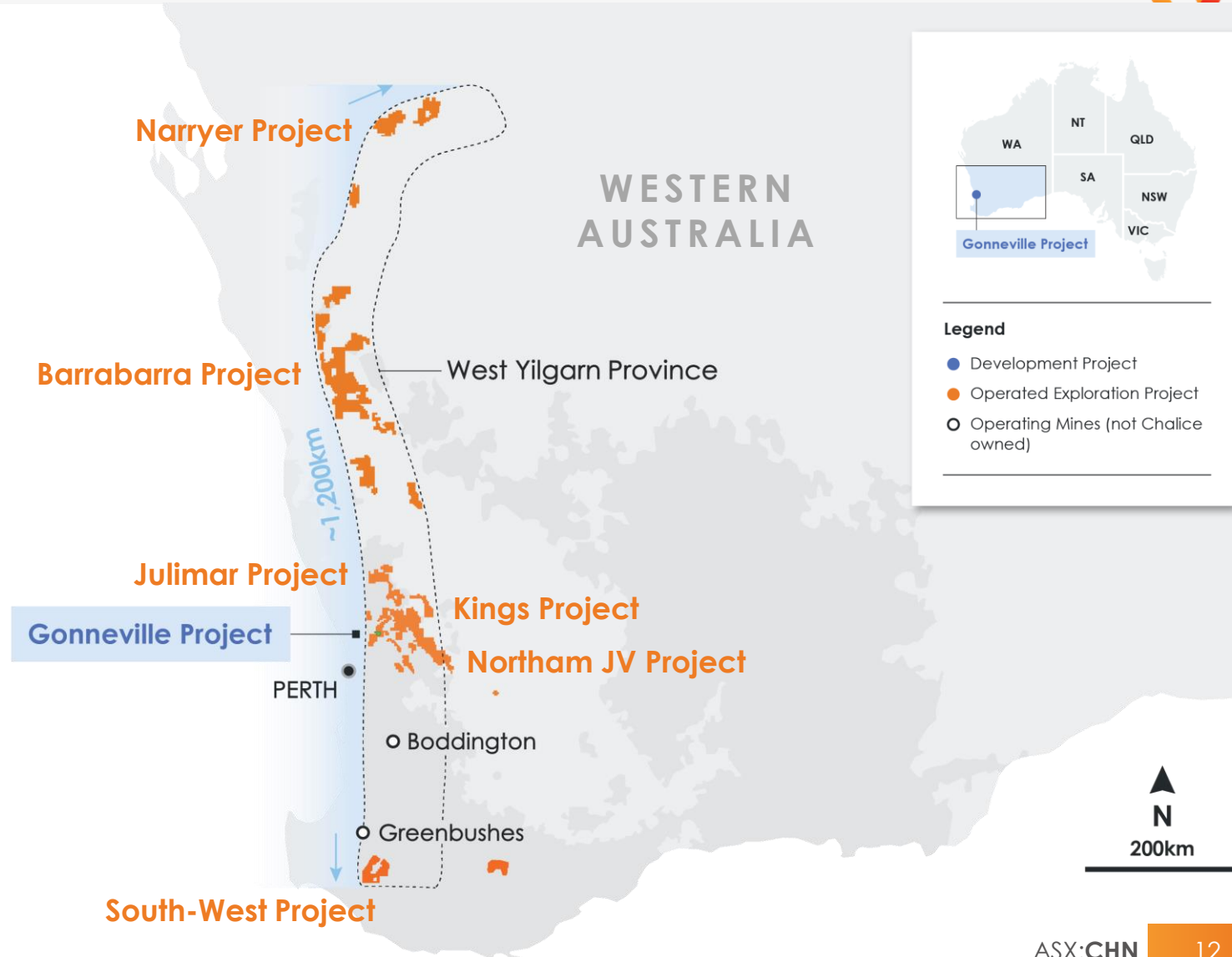
2. For complete NSR assumptions refer to ASX Announcement "Gonneville Resource remodeled to support selective mining", dated 23 April 2024

Starter project process flowsheet to target simple products with staging options being evaluated in the initial phase of the PFS

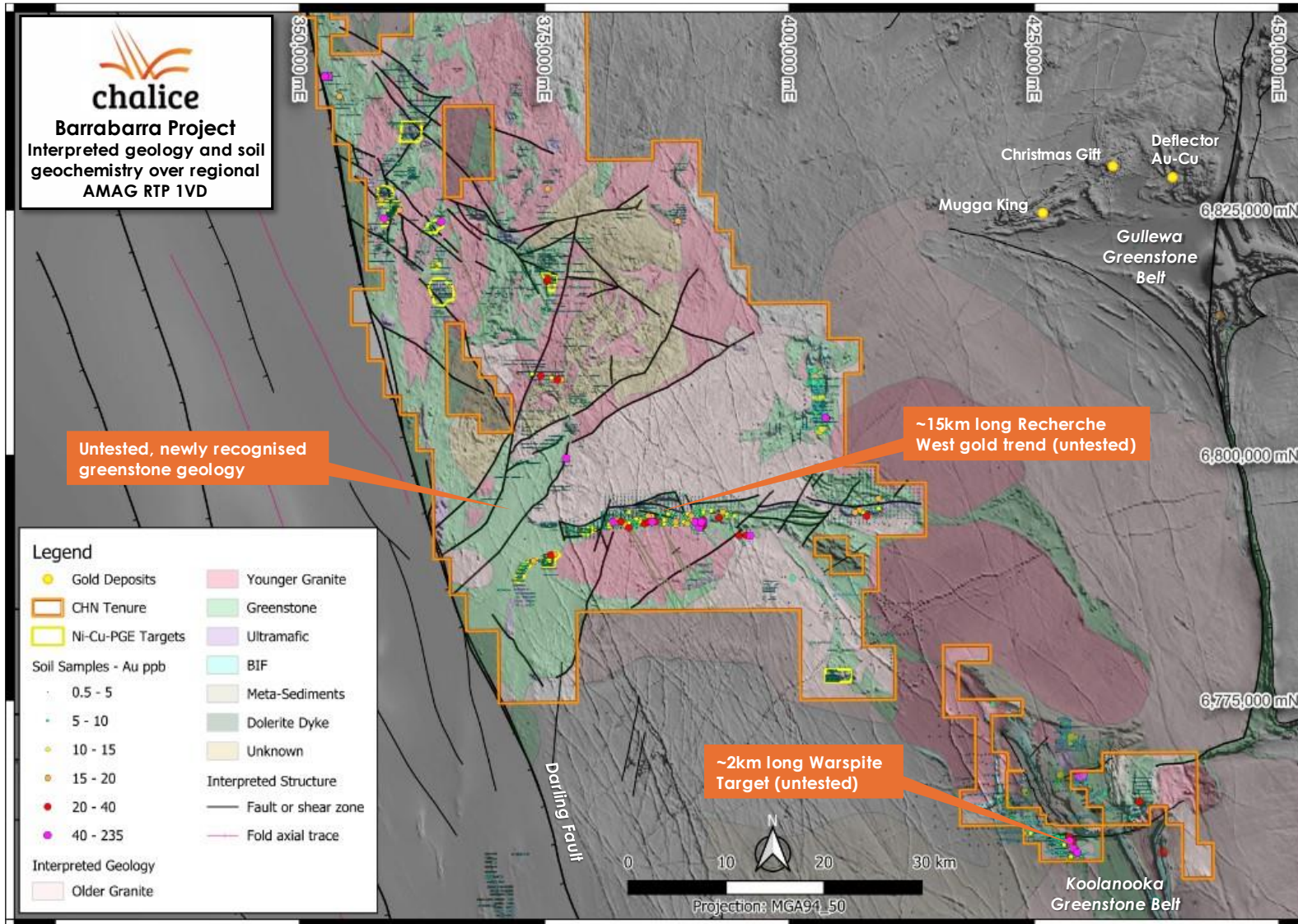


Beyond Gonneville, Chalice has defined **>40 Cu-Au-Ag and Ni-Cu-PGE targets** in the West Yilgarn Province – near-term focus is Cu-Au

- **~1,200km long** western margin of the Yilgarn craton largely covered by Chalice's **~10,000km²** exploration licence holding
- Exciting new search space for intrusion-related / orogenic copper-gold+/-silver and orthomagmatic Ni-Cu+/-PGE deposits, akin to:
 - **Gonneville (~17Moz PGE-Au)**
 - **Boddington (~40Moz Au)**
- Prior to Gonneville discovery, region largely mapped as barren granite-gneiss geology (now proven wrong)
- **Chalice commenced exploring systematically for first time in 2021**
- Extensive geophysical/geochemical data coverage and targeting completed – **now moving to the exciting drill testing phase**

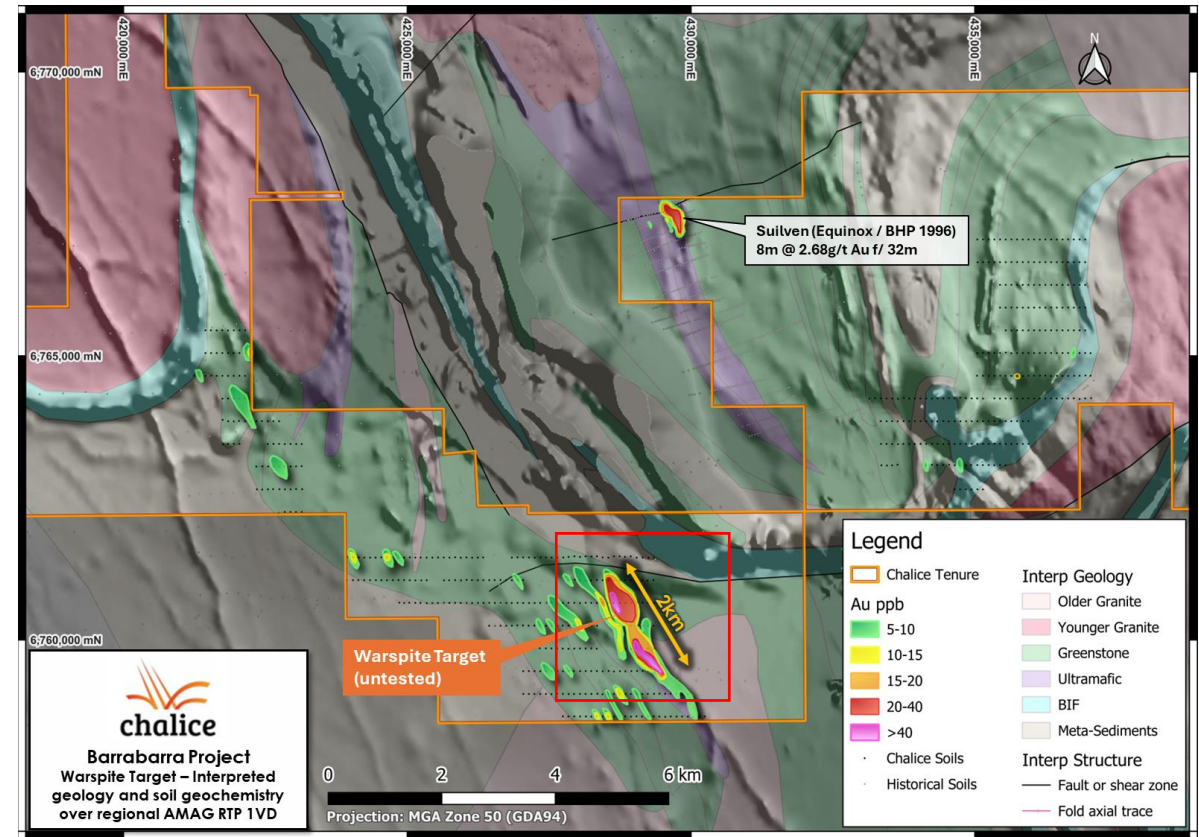
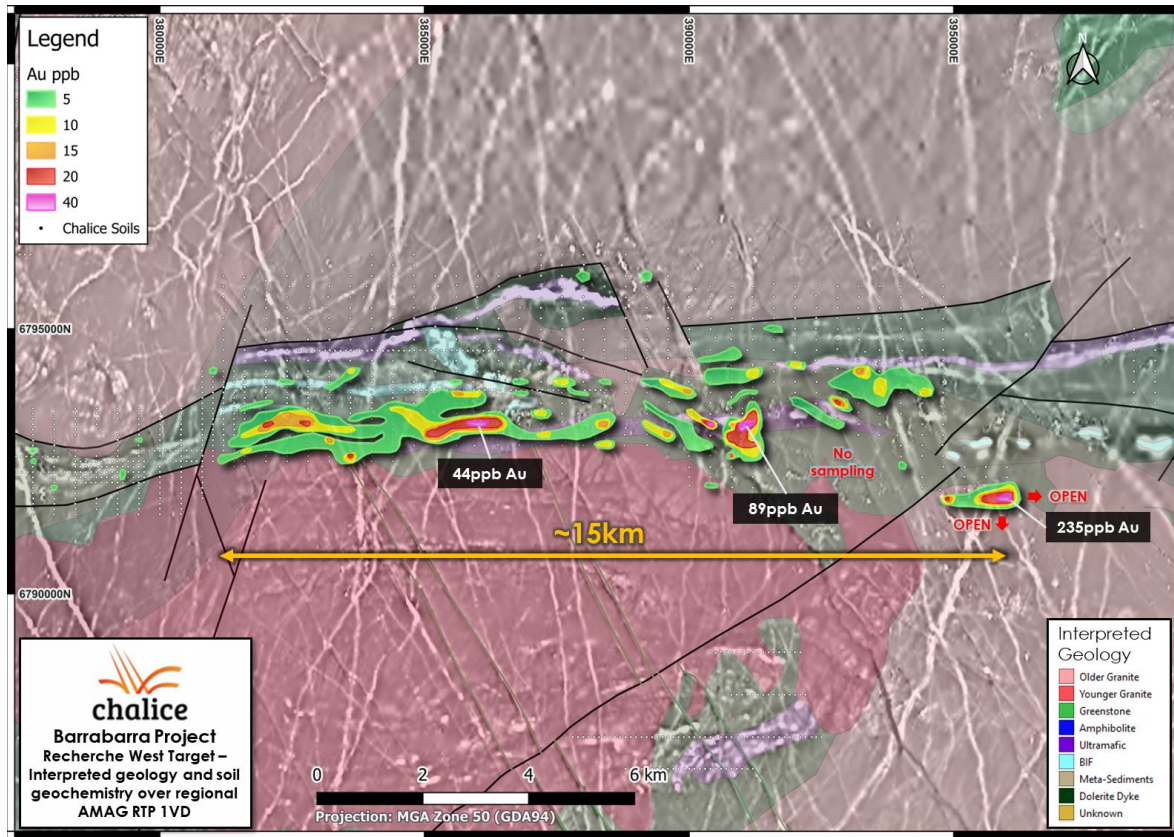


Exploration focus shifted to **gold-copper targeting** in early 2024, with exciting new targets defined



- Exciting new large-scale gold targets at the 4,600km² Barrabarra Project
- **Recherche West – 15km long** gold-in-soil anomaly
- **Warspite – 2km long** gold-in-soil anomaly
- New geological interpretation has revealed extensive areas of interpreted Archaean greenstone belt geology, transected by prominent regional-scale structures
- **Almost entirely unexplored**, further soil sampling along major structures to be completed

The large-scale Recherche West and Warspite targets are completely **untested by drilling** and in favourable geological settings



Initial ~7,000m AC drill program testing both large-scale targets to commence in Q4 CY2024

Chalice is fully funded to progress key development and exploration activities, with **~A\$111M in cash and listed investments**



Progress to date	Status	Forward Plan ¹	Status
 Gonneville discovery	 Mar-20	Gonneville metallurgical testwork and flowsheet development	Ongoing
 Staking of West Yilgarn exploration licence holding	 Mar-20	Gonneville Pre-Feasibility Study (PFS) on staged, high-grade development options	Target mid CY25
 Maiden Mineral Resource Estimate for Gonneville	 Nov-21	Gonneville regulatory approvals	Ongoing
 Gonneville Project Scoping Study on bulk open-pit development options	 Aug-23	AC drilling at Barrabarra Project	Commence Q4 CY24
 Project referred for regulatory approvals	 Mar-24	Project finance and offtake	Commence in H2 CY25
 Strategic MOU with Mitsubishi Corporation	 Jul-24		

1. Study, approvals and development timeline is indicative. There is no assurance that the strategic partnering process will result in a transaction



Chalice holds the premier palladium-nickel-copper development project in the western world



Chalice's team has a track record of discovery and value creation



There is significant exploration upside across the exciting new West Yilgarn Province

Key value drivers and upcoming catalysts

1. PGE price recovery driven by slowing BEV uptake and strong ICE/hybrid sales
2. PFS testwork – confirmation of metallurgical recoveries by domains
3. Investigating high-grade, staged open-pit / underground starter cases during the Pre-Feasibility Study
4. High-priority greenfield exploration in new mineral province ongoing



Appendix



Higher-grade sulphide component of Gonneville Resource (in pit and underground), 23 April 2024



Domain	Cut-off NSR (A\$/t)	Classification	Mass (Mt)	Grade					Contained metal						
				Pd (g/t)	Pt (g/t)	Au (g/t)	Ni (%)	Cu (%)	Co (%)	Pd (Moz)	Pt (Moz)	Au (Moz)	Ni (kt)	Cu (kt)	Co (kt)
HG Sulphide – above 200m depth in-pit	100	Measured	0.8	2.3	0.45	0.05	0.37	0.35	0.026	0.06	0.01	0.00	2.8	2.7	0.20
		Indicated	25	1.4	0.32	0.07	0.21	0.22	0.020	1.1	0.26	0.06	54	54	5.1
		Inferred	1.1	1.2	0.37	0.04	0.20	0.14	0.019	0.05	0.01	0.00	2.2	1.6	0.21
		Subtotal	27	1.4	0.33	0.07	0.22	0.22	0.020	1.2	0.28	0.06	59	58	5.5
HG Sulphide – below 200m depth in-pit	110	Measured	-	-	-	-	-	-	-	-	-	-	-	-	-
		Indicated	9.7	1.6	0.43	0.13	0.19	0.27	0.018	0.51	0.14	0.04	19	26	1.7
		Inferred	15	1.6	0.39	0.07	0.21	0.16	0.019	0.76	0.18	0.03	30	24	2.7
		Subtotal	24	1.6	0.41	0.09	0.20	0.20	0.018	1.3	0.32	0.07	49	50	4.4
HG Sulphide – MSO	110	Measured	-	-	-	-	-	-	-	-	-	-	-	-	-
		Indicated	-	-	-	-	-	-	-	-	-	-	-	-	-
		Inferred	7.3	1.7	0.38	0.09	0.16	0.19	0.015	0.40	0.09	0.02	12	14	1.1
		Subtotal	7.3	1.7	0.38	0.09	0.16	0.19	0.015	0.40	0.09	0.02	12	14	1.1
All HG Sulphide		Measured	0.8	2.3	0.45	0.05	0.37	0.35	0.026	0.06	0.01	0.00	2.8	2.7	0.20
		Indicated	35	1.5	0.35	0.09	0.21	0.23	0.019	1.7	0.39	0.10	73	80	6.8
		Inferred	23	1.6	0.39	0.07	0.19	0.17	0.018	1.2	0.29	0.06	44	39	4.1
		Total	59	1.5	0.37	0.08	0.20	0.21	0.019	2.9	0.69	0.15	120	120	11

Note some numerical differences may occur due to rounding to 2 significant figures.
Includes drill holes drilled up to and including 23 January 2024

Gonneville Mineral Resource Estimate (JORC Code 2012), 23 April 2024



Domain	Cut-off NSR (A\$/t)	Classification	Mass	Grade						Contained metal					
			(Mt)	Pd (g/t)	Pt (g/t)	Au (g/t)	Ni (%)	Cu (%)	Co (%)	Pd (Moz)	Pt (Moz)	Au (Moz)	Ni (kt)	Cu (kt)	Co (kt)
Oxide – in-pit	25	Measured	-	-	-	-	-	-	-	-	-	-	-	-	-
		Indicated	7.0	1.9	-	0.05	-	-	-	0.43	-	0.01	-	-	-
		Inferred	6.1	0.54	-	0.03	-	-	-	0.11	-	0.01	-	-	-
		Subtotal	13	1.3	-	0.04	-	-	-	0.54	-	0.02	-	-	-
Sulphide (Transitional) – in-pit	25	Measured	0.4	0.82	0.18	0.03	0.19	0.160	0.020	0.01	0.00	0.00	0.67	0.56	0.07
		Indicated	14	0.68	0.16	0.03	0.16	0.103	0.020	0.30	0.07	0.01	22	14	2.7
		Inferred	0.1	0.72	0.21	0.02	0.13	0.101	0.014	0.00	0.00	0.00	0.19	0.15	0.02
		Subtotal	14	0.69	0.16	0.03	0.16	0.104	0.020	0.32	0.08	0.01	23	15	2.8
Sulphide (Fresh) – in-pit	25	Measured	2.5	1.0	0.22	0.03	0.21	0.168	0.018	0.08	0.02	0.00	5.4	4.3	0.45
		Indicated	380	0.60	0.14	0.02	0.15	0.088	0.015	7.4	1.7	0.30	570	340	57
		Inferred	240	0.60	0.14	0.02	0.15	0.074	0.015	4.6	1.1	0.15	350	170	35
		Subtotal	620	0.60	0.14	0.02	0.15	0.083	0.015	12	2.8	0.45	930	520	92
Sulphide (Fresh) – MSO	110	Measured	-	-	-	-	-	-	-	-	-	-	-	-	-
		Indicated	-	-	-	-	-	-	-	-	-	-	-	-	-
		Inferred	7.3	1.7	0.38	0.09	0.16	0.192	0.015	0.40	0.09	0.02	12	14	1.1
		Subtotal	7.3	1.7	0.38	0.09	0.16	0.192	0.015	0.40	0.09	0.02	12	14	1.1
All		Measured	2.9	0.99	0.21	0.03	0.21	0.167	0.018	0.09	0.02	0.00	6.1	4.8	0.52
		Indicated	400	0.63	0.14	0.02	0.15	0.087	0.015	8.1	1.8	0.32	600	350	60
		Inferred	250	0.63	0.14	0.02	0.14	0.076	0.014	5.1	1.1	0.18	360	190	36
		Total	660	0.63	0.14	0.02	0.15	0.083	0.015	13	2.9	0.50	960	540	96

Note some numerical differences may occur due to rounding to 2 significant figures.
Includes drill holes drilled up to and including 23 January 2024.

Cautionary statements and competent person(s) disclosure



Authorisation

This Presentation has been authorised for release by the Disclosure Committee.

Disclaimer

This Presentation does not provide investment or financial product advice and does not include all available Information on Chalice Mining Limited ("Chalice" or "the Company") and should not be used in isolation as a guide to investing in the Company. This Presentation is not a prospectus, disclosure document or other offering document under Australian law or under any other law. It is provided for information purposes and is not an invitation nor offer of shares or recommendation for subscription, purchase or sale in any jurisdiction. This Presentation does not purport to contain all the information that a prospective investor may require in connection with any potential investment in the Company. Any potential investor should also refer to Chalice Mining Limited's Annual Reports, ASX releases, and take independent professional advice before considering investing in the Company. For further information about Chalice Mining Limited, visit our website at chalicemining.com

Whilst care has been exercised in preparing and presenting this Presentation, to the maximum extent permitted by law, the Company and its representatives:

- Make no representation, warranty or undertaking, express or implied, as to the adequacy, accuracy, completeness or reasonableness of this Presentation;
- Accept no responsibility or liability as to the adequacy, accuracy, completeness or reasonableness of this Presentation or obligation to update the information in this Presentation; and
- Accept no responsibility for any errors or omissions from this Presentation.

Cautionary statement

This Presentation includes information extracted from the Company's ASX announcement dated 29 August 2023, titled "Gonneville Nickel-Copper-PGE Project Scoping Study".

For the production targets and forecast financial information for the 15Mtpa Case scenario (modelled LOM - 19 years), Inferred Resources comprise 14% of the production schedule over the modelled Life of Mine (LOM). For the 30Mtpa Case scenario (modelled LOM - 18 years), Inferred Resources comprise 37% of the production schedule over the modelled Life of Mine (LOM). Significantly, in both the 15Mtpa Case and 30Mtpa Case scenarios, the Inferred Mineral Resources do not play a prominent role in the initial mine plan. Throughout the first 15 years of production, the Inferred Mineral Resources constitute less than ~20% in both production schedules. Accordingly, Chalice has concluded that it is satisfied that the financial viability of both development cases modelled in the Scoping Study is not dependent on the inclusion of Inferred Resources early in the production schedule given an estimated payback period (from commencement of production) of ~2 years for the 15Mtpa Case and the 30Mtpa Case.

There is a low level of geological confidence associated with Inferred Mineral Resources and there is no certainty that further exploration work will result in the determination of Indicated Mineral Resources or that the production targets themselves will be realised

Forward Looking Statements

This Presentation may contain forward-looking statements and forward information, (collectively, forward-looking statements). These forward-looking statements are made as of the date of this Annual Report and Chalice Mining Limited (the Company) does not intend, and does not assume any obligation, to update these forward-looking statements.

Forward-looking statements relate to future events or future performance and reflect the Company's expectations or beliefs regarding future events and include, but are not limited to: the impact of the discovery on the Gonneville Project's capital payback; the Company's planned strategy and corporate objectives; estimated timing of the Gonneville Project development schedule; the formal arrangements contemplated by the Memorandum of Understanding with Mitsubishi Corporation, the realisation of Mineral Resource Estimates; timing of anticipated production; sustainability initiatives; climate change scenarios; the likelihood of further exploration success; the timing of planned exploration and study activities on the Company's projects; mineral processing strategy; access to sites for planned drilling activities; planned production and operating costs profiles; estimated carbon emissions, planned capital requirements; the success of future potential mining operations and the timing of results from planned exploration programs and metallurgical testwork.

In certain cases, forward-looking statements can be identified by the use of words such as, "commence", "considered", "continue", "could", "estimate", "expected", "for", "forecast", "forward", "future", "intend", "indicative", "is", "leads", "likely", "may", "objectives", "optionality", "outlook", "open", "plan" or "planned", "potential", "predicted", "strategy", "target", "upside", "will" or variations of such words and phrases or statements that certain actions, events or results may, could, would, might or will be taken, occur or be achieved or the negative of these terms or comparable terminology. By their very nature forward-looking statements involve known and unknown risks, uncertainties and other factors which may cause the actual results, performance or achievements of the Company to be materially different from any future results, performance or achievements expressed or implied by the forward-looking statements.

Such factors may include, among others, risks related to actual results of current or planned exploration and development activities; whether geophysical and geochemical anomalies are related to economic mineralisation or some other feature; obtaining appropriate approvals to undertake exploration and development activities; metal grades being realised; metallurgical recovery rates being realised; results of planned metallurgical test work including results from other domains not tested yet; the outcomes of feasibility studies, scaling up to commercial operations; the speculative nature of mineral exploration and development; changes in project parameters as plans continue to be refined and feasibility studies are undertaken; changes in exploration programs and budgets based upon the results of exploration; successful completion of the objectives contemplated by the Memorandum of Understanding with Mitsubishi Corporation; changes in commodity prices and economic conditions; political and social risks, accidents, labour disputes and other risks of the mining industry; delays or difficulty in obtaining governmental approvals, necessary licences, permits or financing to undertake future mining development activities; changes to the regulatory framework within which Chalice operates or may in the future; movements in the share price of investments and the timing and proceeds realised on future disposals of investments as well as those factors detailed from time to time in the Company's interim and annual financial statements, all of which are filed and available for review on the ASX at asx.com.au.

Although the Company has attempted to identify important factors that could cause actual actions, events or results to differ materially from those described in forward-looking statements, there may be other factors that cause actions, events or results not to be as anticipated, estimated or intended. There can be no assurance that forward-looking statements will prove to be accurate, as actual results and future events could differ materially from those anticipated in such statements. Accordingly, readers should not place undue reliance on forward-looking statements.

Cautionary statements and competent person(s) disclosure (cont'd.)



Reliance on Third Party Information

The views expressed in this Presentation contain information that has been derived from third party sources that have not been independently verified. No representation or warranty is made as to the accuracy, completeness or reliability of the information.

Mineral Resources Reporting Requirements

As an Australian Company with securities quoted on the Australian Securities Exchange (ASX), Chalice is subject to Australian disclosure requirements and standards, including the requirements of the Corporations Act 2001 and the ASX. Investors should note that it is a requirement of the ASX listing rules that the reporting of mineral resources in Australia is in accordance with the JORC Code and that Chalice's mineral resource estimates comply with the JORC Code. The requirements of JORC Code differ in certain material respects from the disclosure requirements of other countries. The terms used in this announcement are as defined in the JORC Code. The definitions of these terms may differ from the definitions of such terms for purposes of the disclosure requirements in other countries.

Competent Person(s) Statement

The information in this Presentation that relates to previously reported exploration results is extracted from the following ASX announcements:

- "High-grade nickel-copper-palladium sulphide intersected at Julimar Project in WA", 23 March 2020.
- "Extensive Ni-Cu Soil Anomalism at Julimar", 9 June 2021.
- "Major Northern Extension of Gonneville Confirmed", 19 October 2022.
- "Promising New Sulphide Mineralisation at the Hooley Prospect", 8 December 2022.
- "New wide high-grade zones in ~900m step-out drill hole", 31 July 2023.
- "Gonneville Nickel-Copper-PGE Project Scoping Study", 29 August 2023.
- "High-grade copper-PGE zones extended at Gonneville", 30 November 2023.
- "Gonneville Resource Remodelled to Support Selective Mining", 23 April 2024.
- "Gonneville Project Metallurgical Testwork and PFS Update", 11 June 2024.

The information in this Presentation that relates to Mineral Resources has been extracted from the ASX announcement titled:

- "Gonneville Resource Remodelled to Support Selective Mining", 23 April 2024.

The above announcements are available to view on the Company's website at chalicemining.com

The Company confirms that it is not aware of any new information or data that materially affects the information included in the original market announcements and, in the case of Mineral Resources, that all material assumptions and technical parameters underpinning the estimates in the original release continue to apply and have not materially changed. The Company confirms that the form and context in which the Competent Person's findings are presented have not been materially modified from the relevant original market announcements.

Production Targets and Forecast Financial Information

The production targets and forecast financial information disclosed in this Presentation is extracted from the Company's ASX announcement "Gonneville Nickel-Copper-PGE Project Scoping Study", dated 29 August 2023.

All material assumptions underpinning the production targets and forecast financial information derived from the production targets in the previous announcement continue to apply and have not materially changed.



Visit our website and sign up to receive our latest news



chalice-mining



@ChaliceMining



www.chalicemining.com

Level 3, 46 Colin Street West Perth WA 6005, Australia

+61 8 9322 3960

info@chalicemining.com

ABN 47 1 16 648 956