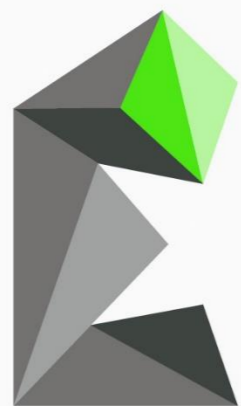


ASX: **KNG**



KINGSLAND
MINERALS

**Developing Australia's
Largest Graphite
Deposit**

December 2024

Resources Rising Stars – Summer Series

Disclaimers

Nature of this document: The purpose of this presentation is to provide general information about Kingsland Minerals (ACN 647 904 014) (the 'Company'). Unless otherwise stated herein, the information in this presentation is based on the Company's own information and estimates as of the date of this presentation. In attending this presentation or viewing this document you agree to be bound by the following terms and conditions.

Not an offer or advertisement: This presentation is for information purposes and does not constitute or form any part of any offer or invitation to sell or issue, or any solicitation of any offer to purchase or subscribe for, any securities in the Company in any jurisdiction. This presentation and its contents must not be distributed, transmitted or viewed by a person in any jurisdiction where the distribution, transmission or viewing of this document would be unlawful under the securities or other laws of that or any jurisdiction. In particular, this presentation may not be distributed or released, directly or indirectly, in the United States. This presentation does not constitute an advertisement for an offer or proposed offer of shares. Neither this presentation nor anything contained in it forms the basis of any contract or commitment and it is not intended to induce or solicit any person to enter into, or refrain from entering into, any contract or commitment.

Not financial product advice: This presentation does not take into account the individual investment objectives, financial situation and particular needs of each of the Company's shareholders or potential investors. You may wish to seek independent financial and taxation advice before making any decisions with respect to this presentation. Neither the Company nor any of its related bodies corporate are licensed to provide financial advice in respect of the Company's securities or any other financial products.

Forward-looking statements: Certain statements in the presentation are or may be perceived as "forward-looking statements" and represent the Company's intentions, projections, expectations or beliefs concerning, among other things, future operating and exploration results or the Company's future performance. You are cautioned not to place undue reliance on any forward-looking statement. These forward-looking statements are based on current expectations at the date of this publication. The projections, estimates and beliefs contained in such forward-looking statements necessarily involve known and unknown risks and uncertainties and are necessarily based on assumptions, which may cause the Company's actual performance and results in future periods to differ materially from any express or implied estimates or projections.

Disclaimer: No representation or warranty, express or implied, is made by the Company that the material contained in this presentation will be achieved or prove to be correct. Except for statutory liability which cannot be excluded, each of the Company, its directors, officers, employees, advisers, agents and contractors expressly disclaims any responsibility for the accuracy, fairness, sufficiency or completeness of the material contained in this presentation, or any opinions or beliefs contained in this presentation, and excludes all liability whatsoever (including negligence) for any loss or damage which may be suffered by any persons as a consequence of any information in this presentation or any error or omission therefrom. The Company is under no obligation to update or keep current the information contained in this presentation or to correct any inaccuracy or omission which may become apparent or to furnish any person with any further information. Any opinions expressed in the presentation are subject to change without notice.

Unverified information: This presentation may contain information (including information derived from publicly available sources) that has not been independently verified by the Company.

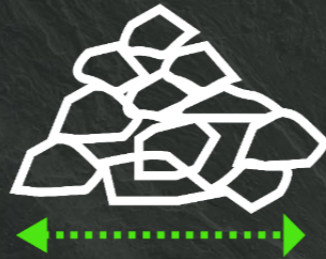
► Why invest in Kingsland Minerals?



Kingsland 100% owns the Leliyn Graphite Project in the NT which hosts **Australia's largest graphite deposit at 194.6Mt @ 7.3% TGC**



Leliyn Exploration Target of 700Mt – 1,100Mt @ 7-8% TGC highlights globally significant scale of the 20km graphitic schist



Successful metallurgical testwork delivered **graphite flake concentrate >94% TGC**



Mineral Resource is near surface and amenable to very efficient and productive **open pit mining techniques with a very low strip ratio**



250km from Darwin port with rail/road access is an **ideal location to export product to Asia Pacific trade partners** (Japan, South Korea, etc.)



Strategic partnership with Quinbrook Infrastructure Partners to develop downstream processing capability in Darwin

Globally significant graphite project in a tier one mining jurisdiction

► Strategic Partner – Quinbrook Infrastructure Partners (QIP)



Who are Quinbrook?

Quinbrook Infrastructure Partners is a specialist investment manager focused exclusively on the infrastructure needed to drive the energy transition in the UK, US, and Australia



What do Quinbrook do?

Quinbrook is led and managed by a senior team of power industry professionals who have collectively invested c. USD 5.6 billion of equity capital in 43.3 GW of energy infrastructure assets representing a total transaction value of USD 48.3 billion. Quinbrook is the development partner for the SunCable Project.



SunCable to Provide Renewable Energy to the Northern Territory

SunCable proposes to develop the world's largest renewable energy generation and battery storage precinct in the heart of the Northern Territory, and a 5,000km high voltage direct current (HVDC) system, to deliver up to 6GW of 24/7 green electricity to industrial customers in Darwin (stage 1) and Singapore (stage 2).



Exploring Downstream Processing Facilities in Darwin

SunCable is planned to provide renewable energy to power the Middle Arm Sustainable Development Precinct at Darwin. This is the planned location of the spherical graphite processing facility.

► Strategic Partner – Quinbrook Infrastructure Partners (QIP)



Placement of 11.11m shares at \$0.23/share

Quinbrook Infrastructure Partners to invest \$2.55m into Kingsland and become cornerstone investor with 15% of issued capital. Investment represents 30% premium to 20-day VWAP. Quinbrook has one board seat.



Graphite concentrate off-take agreement

Quinbrook has entered into graphite concentrate off-take with Kingsland for the Leliyn Graphite Project to supply concentrate to processing facility in Darwin.



SunCable to Provide Renewable Energy

Quinbrook and Kingsland enter into agreement for option to supply Leliyn Project with renewable energy

Transformational agreement to establish integrated mining, processing and advanced downstream processing facilities in the Northern Territory

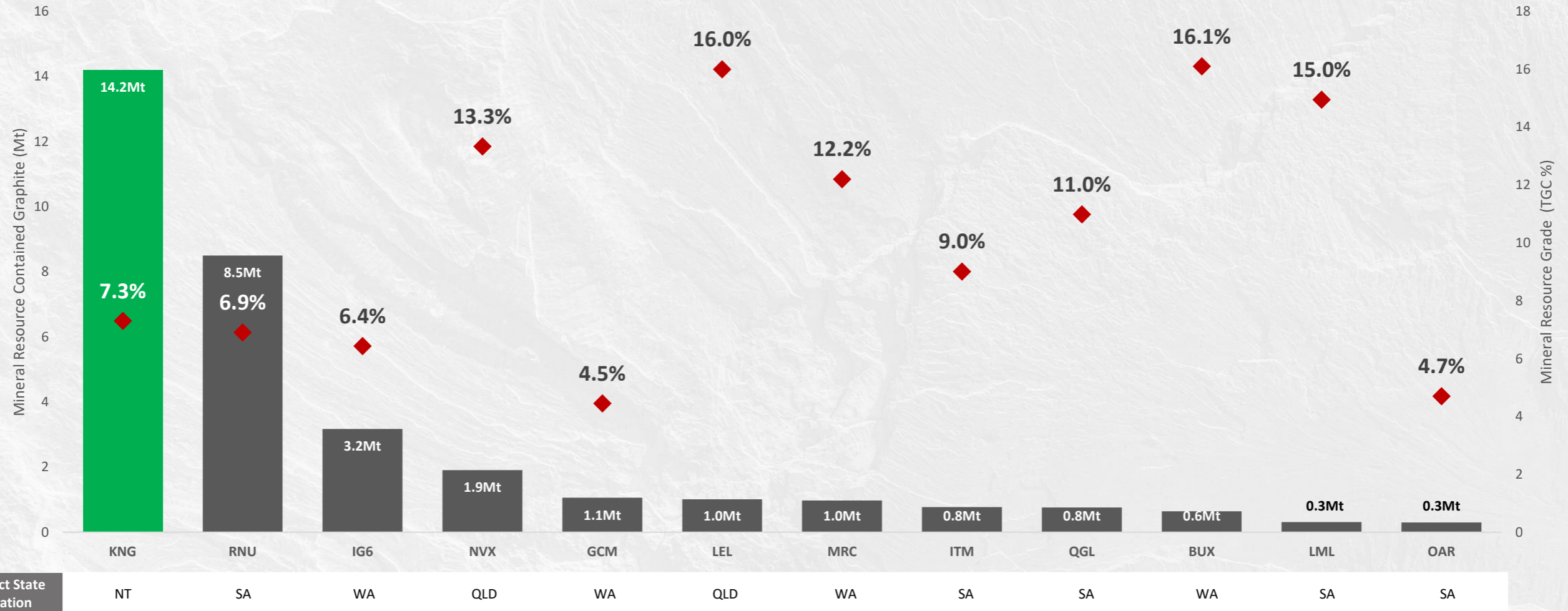
► Strategic Partner – Quinbrook Infrastructure Partners (QIP)

Rationale of investment

- Establishment of a domestic, integrated mining, processing and downstream processing stream
- Minimise jurisdictional risk: mining and downstream processing are both located in the Northern Territory
- Reduction of capital burden on Kingsland: KNG funds mine (flake graphite), Quinbrook funds downstream processing facility (purified, spherical graphite PSG)
- Provision of clean, efficient power through SunCable
- Agreements in place for off-take of flake graphite
- Agreements in place for provision of renewable energy sources

Leliyn Mineral Resource Estimate

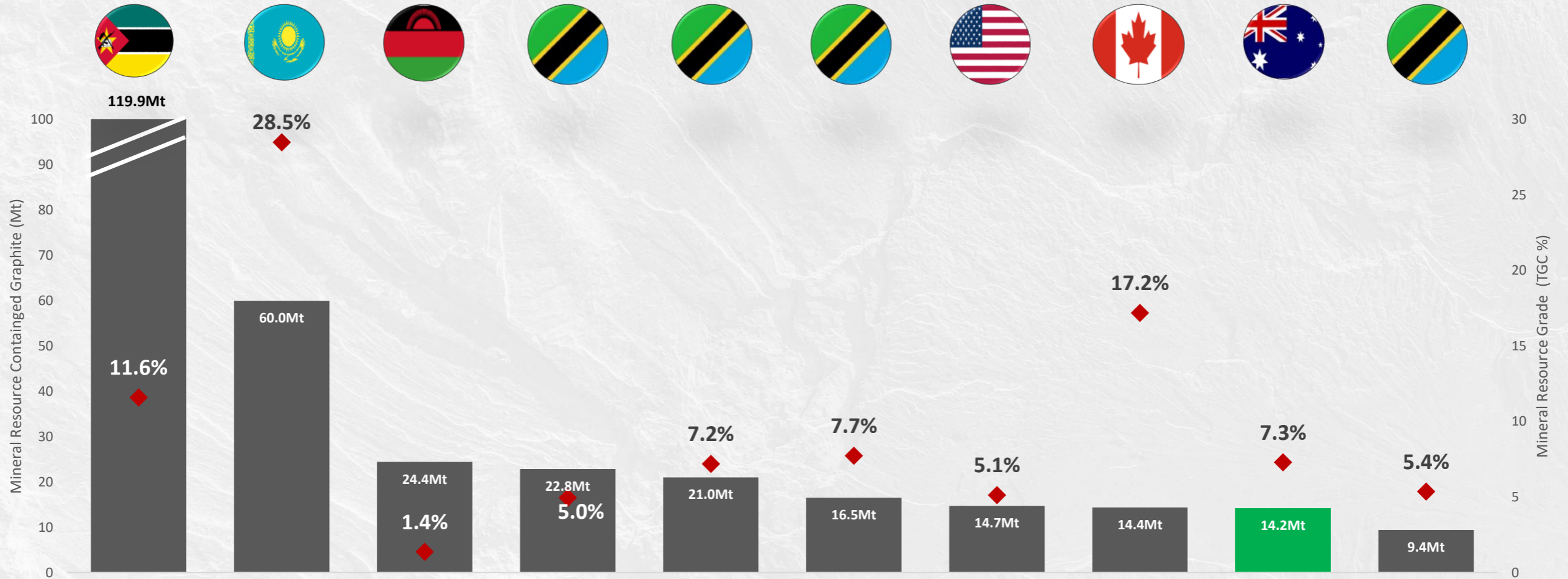
Largest graphite deposit in Australia based on 25% of the graphitic schist



Leliyn is Australia's largest graphite deposit following the release of a Maiden Inferred Resource of 194.6Mt @ 7.3% TGC in March 2024 based on only 4km of the 20km graphitic schist

Global Top 10 Graphite Deposits

Leliyn is a globally significant graphite deposit **in a tier one mining jurisdiction**

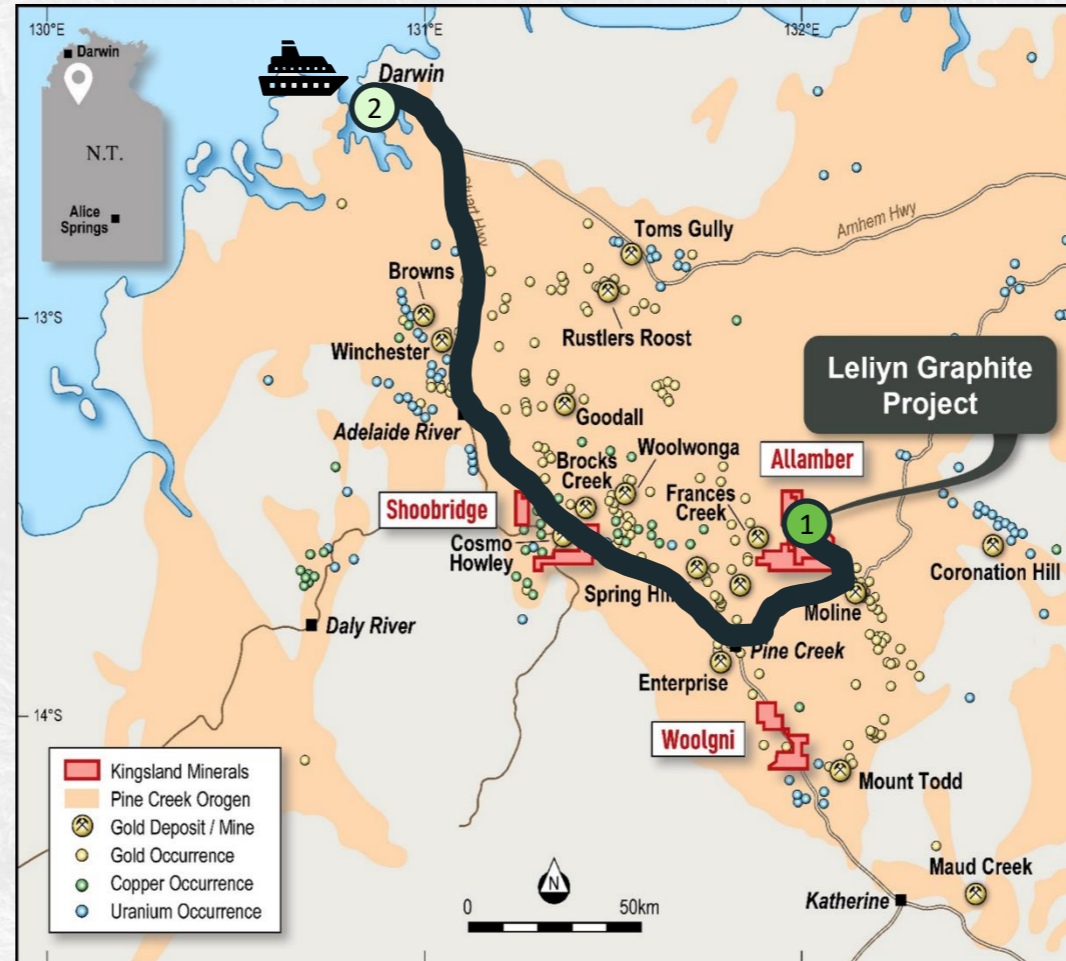


Company	Project	Project Location
Syrah	Balama	Mozambique
Sarytogan	Sarytogan	Kazakhstan
Sovereign Metals	Kasiya	Malawi
Volt	Bunyu	Tanzania
Ecograf	Epanko	Tanzania
Black Rock	Mahenge	Tanzania
Graphite One	Graphite One	Alaska, USA
Nouveau Monde	Lac Gueret	Canada
Kingsland	Leliyn	Australia, NT
Magnis Energy	Nachu	Tanzania

Leliyn is one of few globally significant graphite deposits located in a tier one mining jurisdiction

Australian Graphite Deposits

Leliyn is ideally located with access to Darwin and International markets



Excellent location in the Pine Creek mining district

250km from Darwin Port with rail/road access

Existing infrastructure with a long history of mining and exploration

Leliyn is ideally placed to export graphite products to Asian, North American and European markets

Kingsland will investigate access to government funding (NAIF, CMDP, etc)

STAGE 1

Production of flake graphite concentrate at Leliyn

Deliver flake graphite concentrate to Darwin at as low a price as possible with targeted superior ESG credentials

STAGE 2

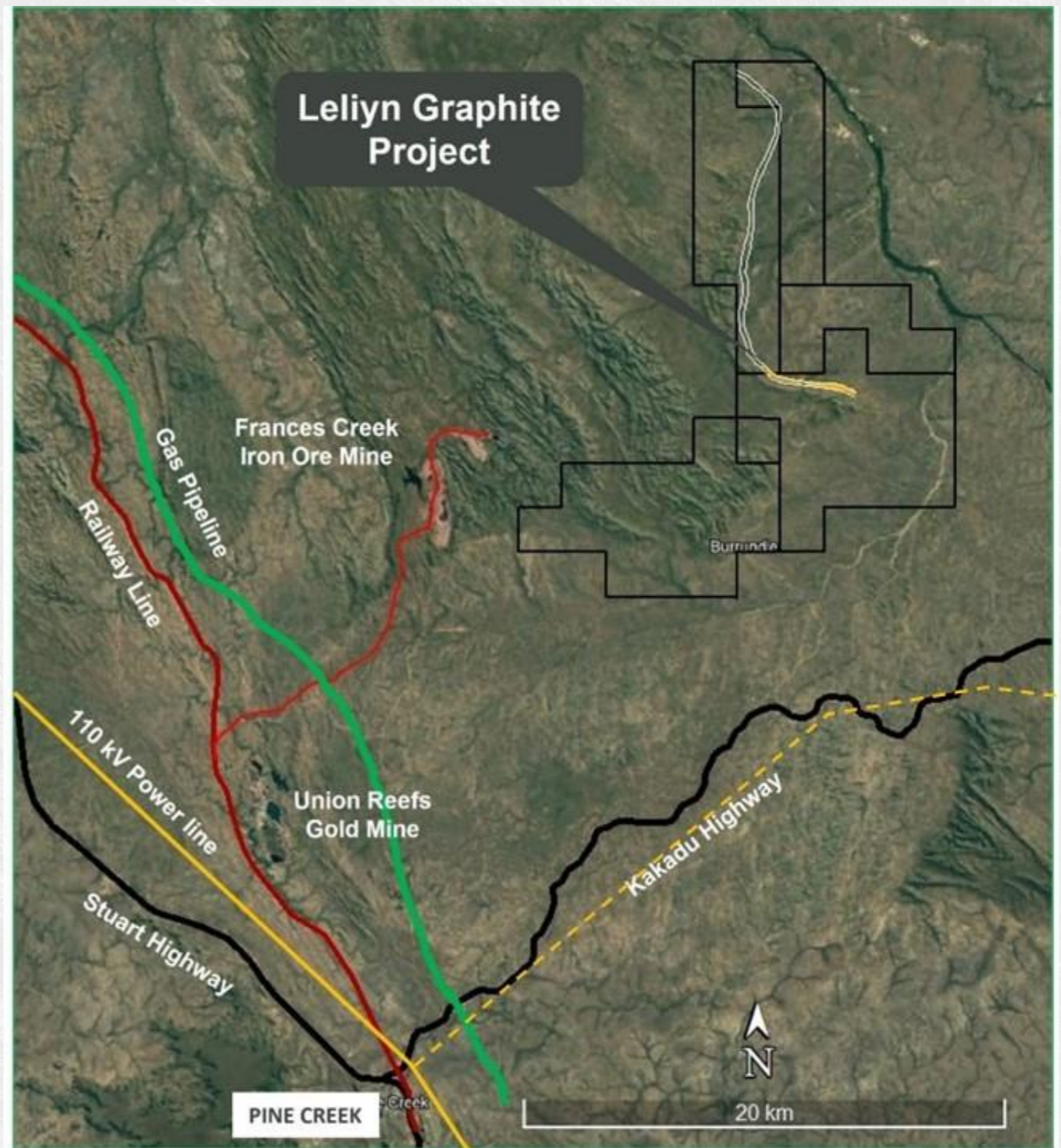
Production of refined graphite products in Darwin

Downstream processing in Darwin to produce refined graphite products for consumption in Australia and/or overseas

Infrastructure in Place

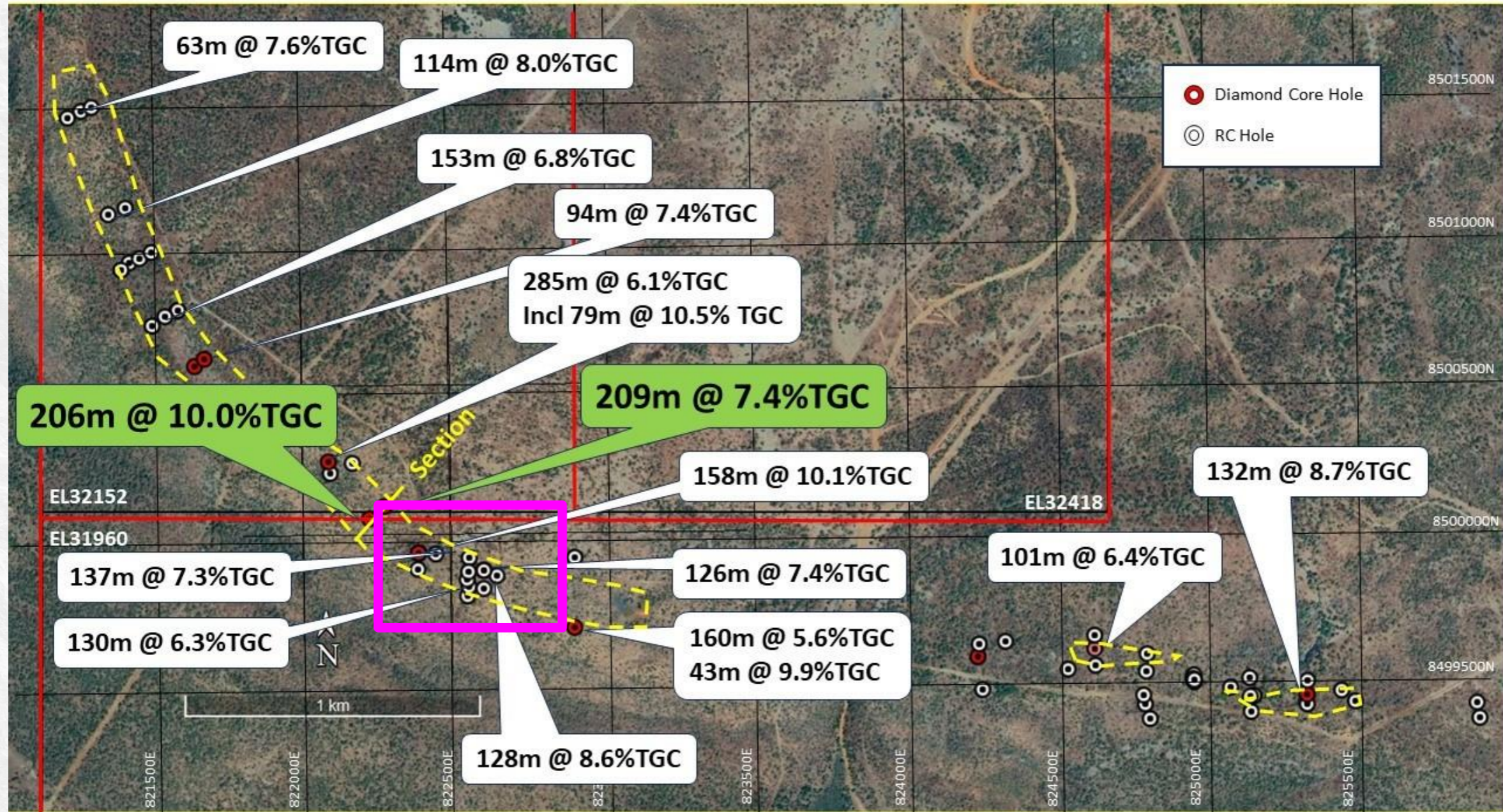
Existing Infrastructure

- ✓ Rail loading area used for Frances Creek Iron Ore Mine in 1970's
- ✓ Haulage road from Frances Creek to rail loading area.
- ✓ Sealed Kakadu and Stuart Highways
- ✓ 110 kV power line
- ✓ Gas pipeline
- ✓ Pine Creek, accommodation, fuel etc



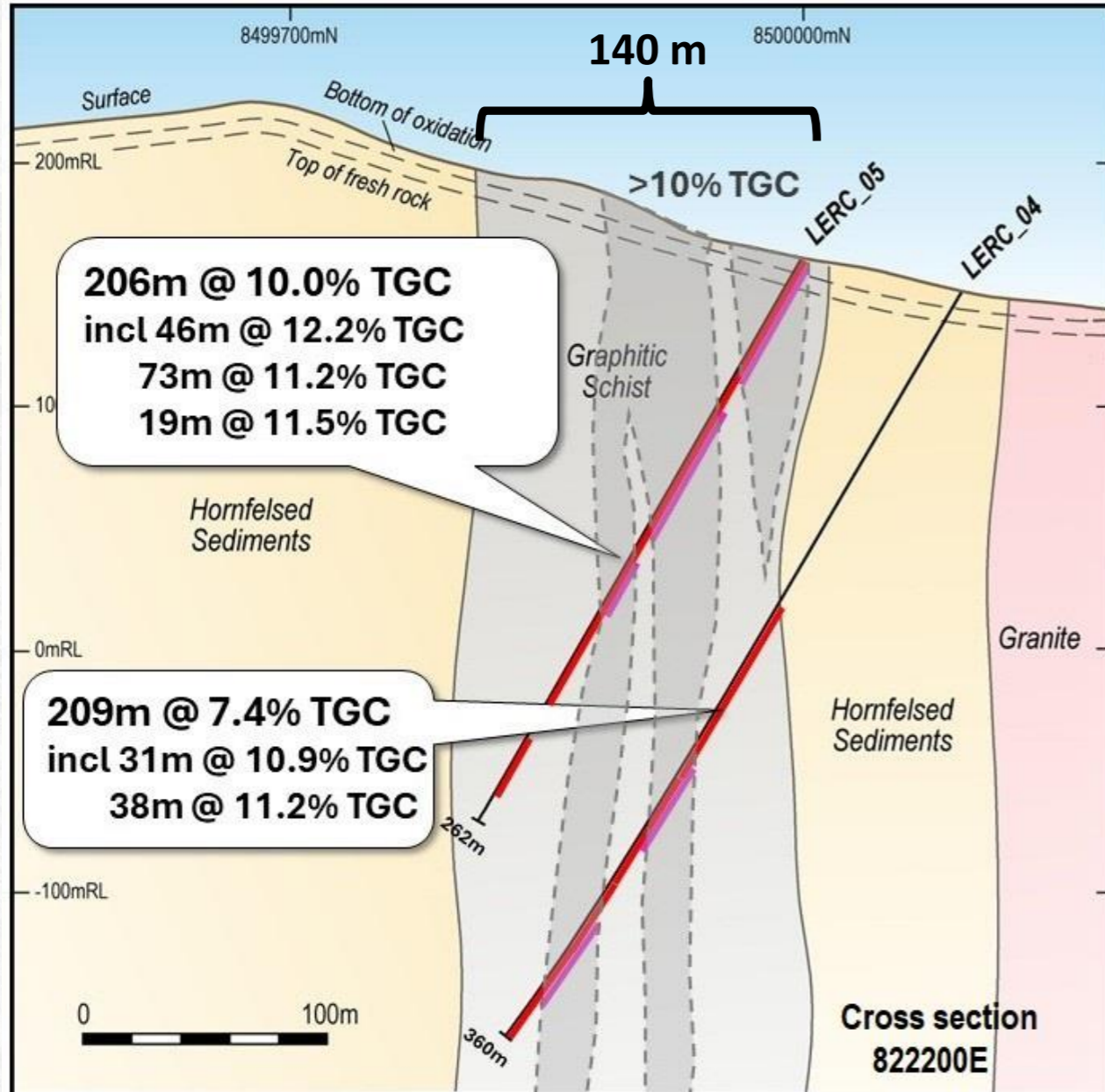
Leliyn Graphite Project

Mineral Resource Area with drilling to date and location of cross-section



Maiden Mineral Resource Estimate

Lelyn is Australia's largest graphite deposit – **with exceptional upside**



Maiden Inferred Mineral Resource of 194.6mt @ 7.3% TGC containing 14.2Mt graphitic carbon released in March 2024

Massive upside along remaining 16km of strike for additional resources

Outcropping mineralisation up to >100m wide on surface

Amenable to very efficient and productive open pit mining techniques with a very low strip ratio

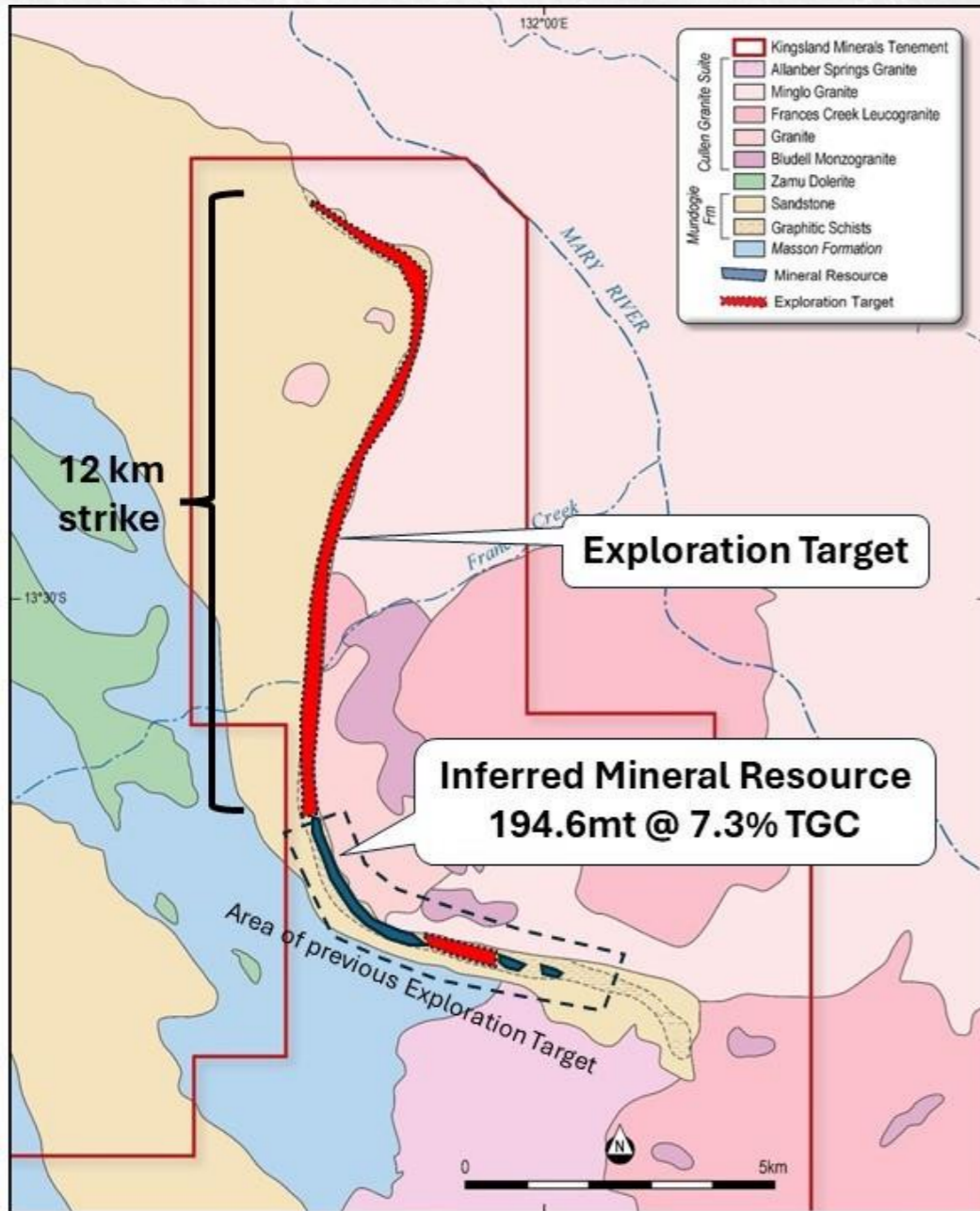
Mineralisation is continuous along strike and at depth

Lelyn delivered some of the best graphite intercepts globally during its CY2023 drill program

- 206m @ 10.0% TGC from 0m
- Incl. 46m @ 12.2% TGC from 31m and 73m @ 11.2% TGC from 67m
- 209m @ 7.4% TGC from 154m
- Incl. 31m @ 10.9% from 237m and 38m @ 11.2% TGC from 314m

Updated Exploration Target

Leliyn is a globally significant graphite deposit – **ability to optimise resource**



Updated Exploration Target of 700 – 1,110Mt @ 7-8% TGC for 50-90Mt of contained graphitic carbon released in June 2024

Only 25% (4.7km) of total graphitic schist unit has been drilled, identifying the largest graphite resource in Australia

75% (13.5km) remains untested demonstrating considerable upside to significantly increase mineral resource tonnage

Given the potential significance of the MRE, testing work is prioritised to strategically de-risk the project before increasing the scale

Ability to optimise flake characteristics within remaining ~14km of strike

Leliyn Graphite Project Exploration Target

Tonnes (t)	Grade (% TGC)	Contained Graphite (t)
700 million -1.1 billion	7% - 8%	50 million – 90 million

The quantity and grade of the Exploration Target for the Leliyn Graphite Project is conceptual in nature, there has been insufficient exploration to estimate a Mineral Resource and it is uncertain if further exploration will result in the estimation of a Mineral Resource.

Leliyn Graphite Metallurgical Test-work

Flotation test-work has produced a commercial grade concentrate >94% TGC

Important milestone as metallurgical testwork proves that Leliyn can produce a marketable product

Test-work ongoing to optimise flotation flowsheet

Bulk concentrate sample being generated for further test-work for production of purified, spherical graphite

Leliyn is predominantly fine flake, more suitable for battery applications

STAGE 1

Production of flake graphite concentrate at Leliyn

Deliver flake graphite concentrate to Darwin at as low a price as possible with targeted superior ESG credentials

Met Testwork



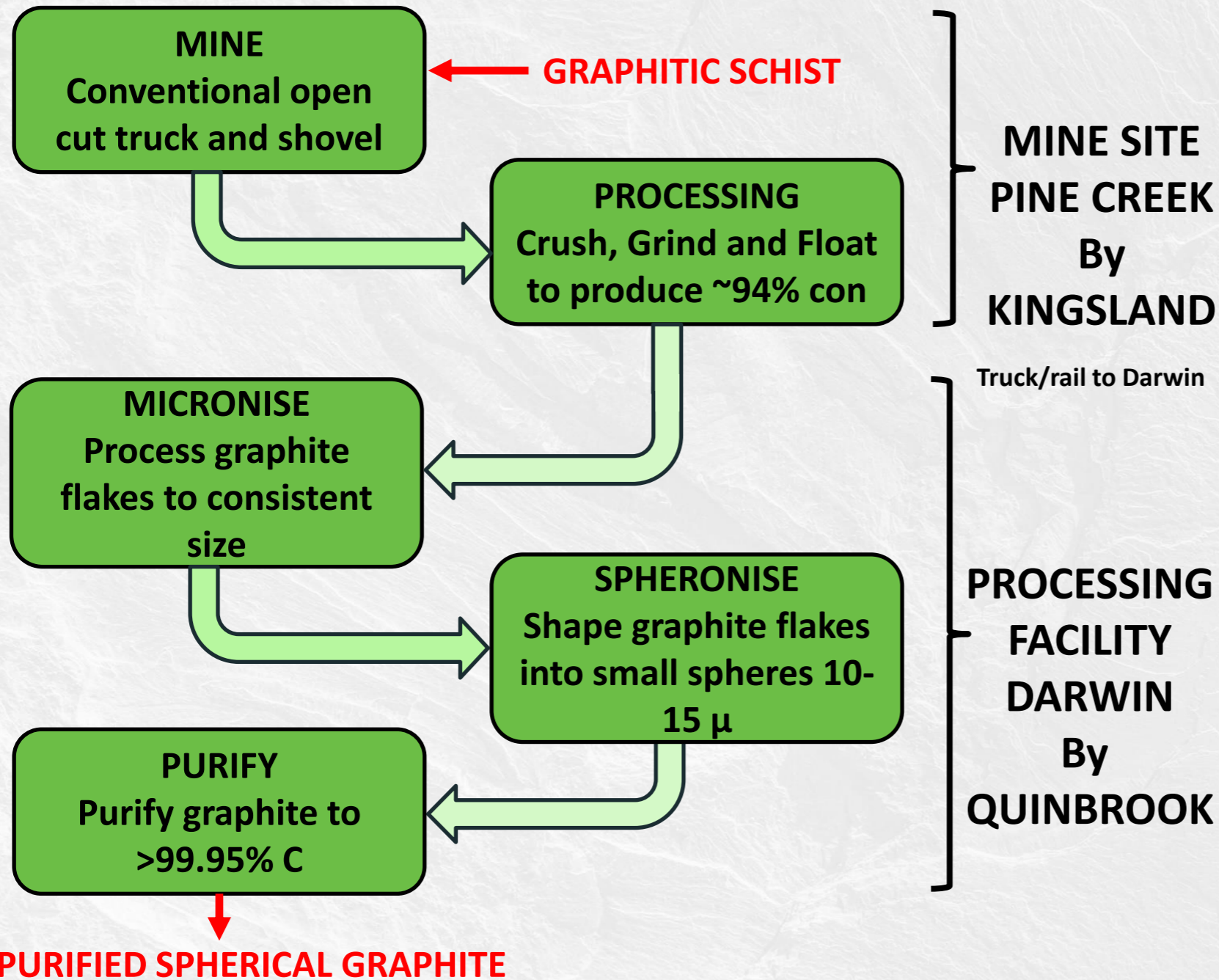
STAGE 2

Production of refined graphite products in Darwin

Downstream processing in Darwin to produce refined graphite products for consumption in Australia and/or overseas



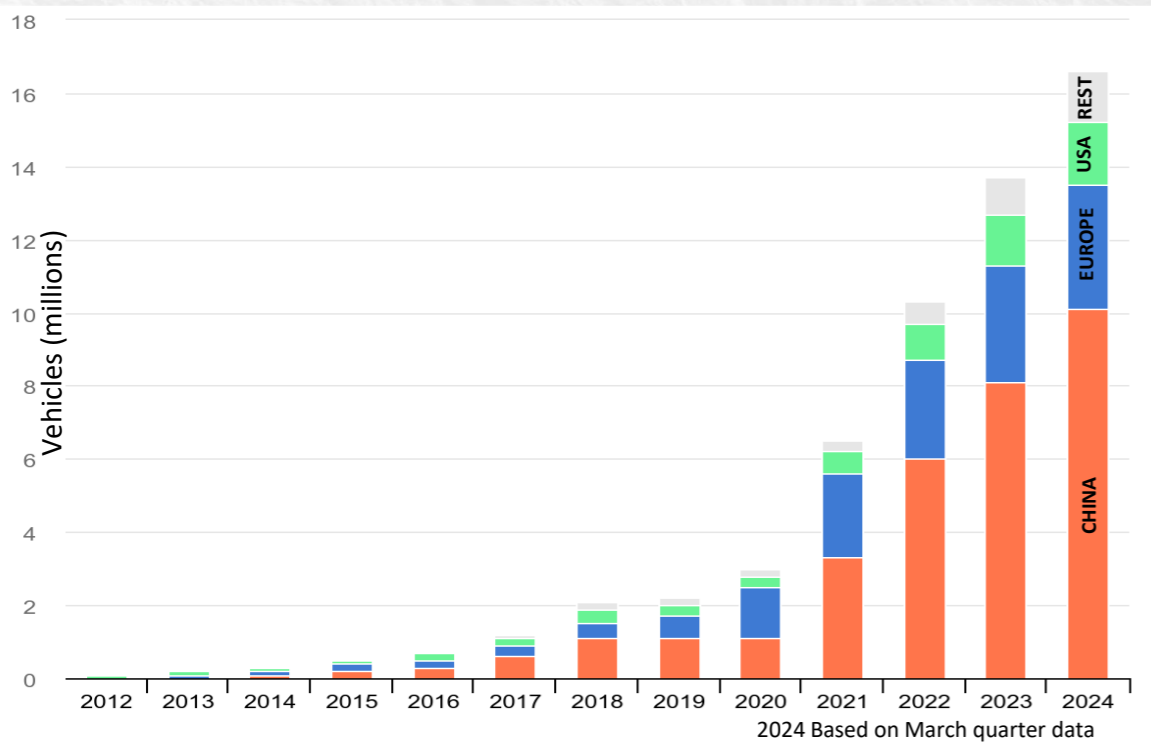
Leliyn Graphite Processing



Graphite Demand driven by Electric Vehicles and Battery Energy Storage Systems

EU, UK, China ban ICE by 2035 | **nearly 10% of new car sales in Aust are EV's¹**

Increasing EV car sales will drive increasing graphite demand



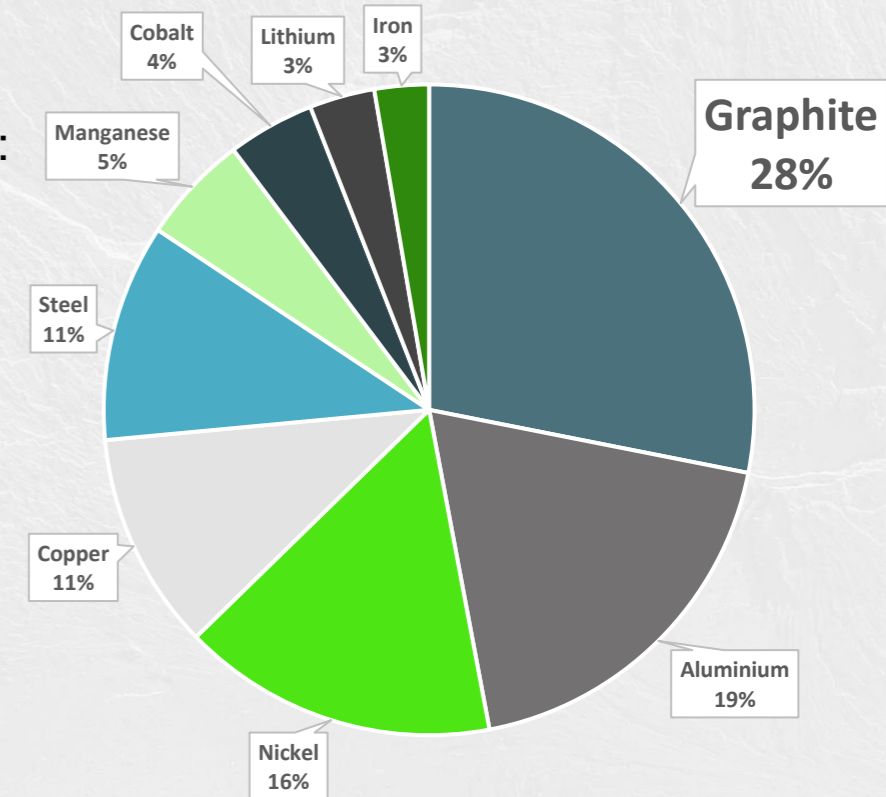
International Energy Agency (<https://www.iea.org/data-and-statistics/charts/electric-car-sales-2012-2024>)

- 1) 9.6% of all vehicles in March 2024
6.5% of all vehicles in April 2024
8.2% of all vehicles in May 2024
8.3% of all vehicles in June 2024
6.3% of all vehicles in July 2024
5.8% of all vehicles in August 2024
NRMA www.mynrma.com.au

Typical EV battery contains:

52kg Graphite

- 35 kg Aluminium
- 29 kg Nickel
- 20 kg Copper
- 20 kg Steel
- 10 kg Manganese
- 8 kg Cobalt
- 6 kg Lithium
- 5 kg Iron



There is more graphite than anything else

Source: www.elements.visualcapitalist.com

Graphite demand will be driven by EV battery use. Internal combustion engines (ICE) phased out by 2035 in EU, China and UK

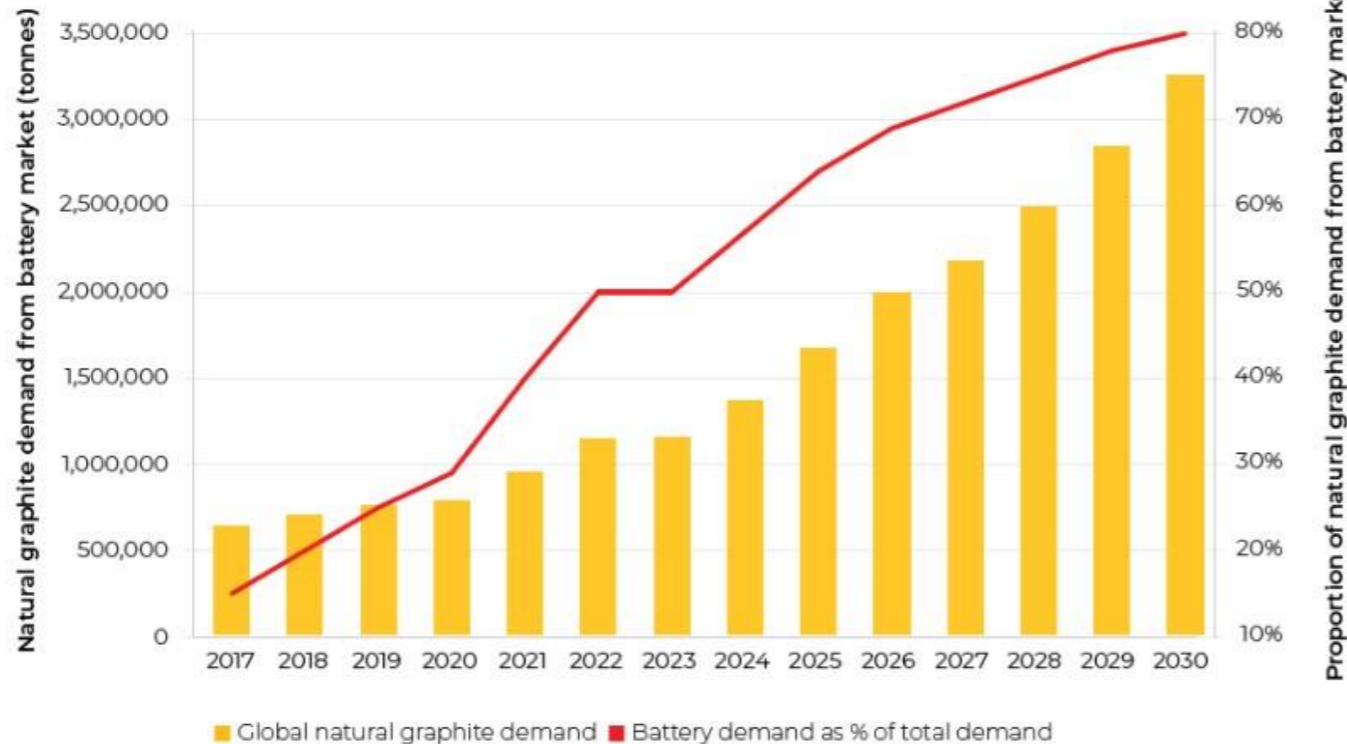
Graphite Demand driven by Electric Vehicles

EV's driving demand growth – demand to outstrip supply



The battery market is the key demand driver for natural graphite

Global demand for natural graphite is forecast to rise 5x between 2017 and 2030, with the proportion of demand coming from the battery market rising from 15% to 80% over this period



SOURCE: BENCHMARK NATURAL GRAPHITE FORECAST Q1 2024



Battery market to grow from current ~55% of total graphite demand to 80% in 2030.

Increased demand combined with supply limitations will lead to increased prices for flake graphite

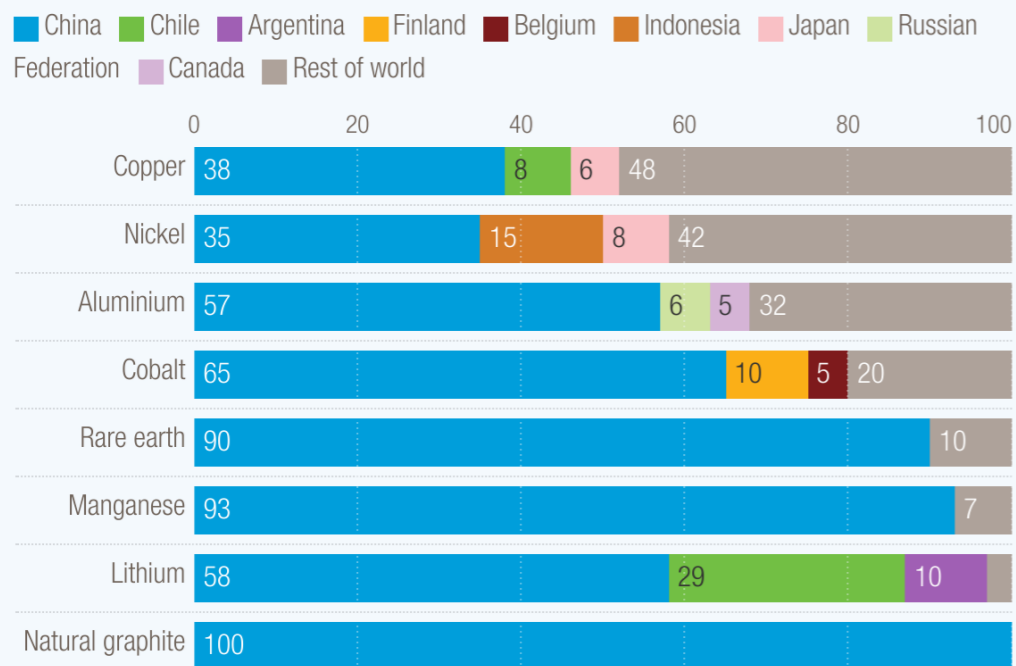
USA tariffs (25%) on flake graphite delayed two years due to lack of ex-China supply options for IRA compliant production

Graphite Supply

Public policy driving procurement of graphite supply outside of China

China leads in critical mineral processing

Share of top mineral processing countries in world total for selected minerals



Source: UN Trade and Development (UNCTAD), based on OECD (2023a). Strengthening Clean Energy Supply Chains for Decarbonisation and Economic Security: OECD Report for the Group of Seven Finance Ministers and Central Bank Governors.

Public Policy & Initiatives

United States

- Transition rules in place for graphite sourcing
 - No graphite from FEOC (inc. China) from 2027
 - OEMs must demonstrate how they will source compliant graphite from 2027 to qualify for IRA rebates
- 25% tariff on Chinese graphite from 2026

EU Critical Raw Materials Act

- Not more than 65% of EU critical mineral demand to be sourced from a single non-EU country by 2030

Market now diversifying and seek ex-China natural and processed graphite sources

- China introduced export controls for graphite products on 1 December 2023

Graphite Supply

Public policy driving procurement of graphite supply outside of China

Trade war 2.0: Trump's China tariff bombshell sends global shockwaves

WILL GLASGOW
AND KYLE JACK QUINN

Donald Trump has begun his second trade war with China with an initial 10 per cent hit on top of existing duties as well as fresh 25 per cent tariffs for Canada and Mexico as the president-elect puts allies and adversaries on notice that he intends to deliver as his tough campaign rhetoric.

Beijing labelled the incoming US president's announcements "irresponsible", while Canadian Prime Minister Justin Trudeau made a stark appeal in a phone call shortly after Mr Trump announced the incoming tariffs in a series of social media posts.

In a flurry of posts that rolled world markets, the president-elect accused China of failing to follow through on promises to crack down on traffickers of fentanyl, all but incoming President Xi Jinping of complicity in the drug trade.

"I have had many calls with China about the massive amounts of drugs, in particular fentanyl, being sent into the United States - But to no avail," he declared.

"Until such time as they stop we will be changing China as additional 10% Tariff, across any additional Tariffs, on all of their many products coming into the United States of America."

China's national broadcaster CCTV said Mr Trump had made the threats "irresponsible". Chinese diplomats insisted they had co-operated with Washington in trying to reduce the drug

Japan's former ambassador reveals: Wong 'called me in'

DIENNIS BELANAIAN
NATIONAL DEPUTY

Former Japanese ambassador to Australia, Shingo Yamagami, has revealed he was "called in" to Prime Wong's office to be cautioned over public criticism

of China even before Labor was elected in 2022 and she became the foreign minister.

Describing the summons to an ambassador to be cautioned by "a heavy weight MP of the Labor left" who was not even in government as "extraordinary and unacceptable", Mr Yamagami said it was not clear whether Senator Wong was speaking on behalf of the ALP or just expressing her own views.

The then ambassador said he was told in 2021 to come to the parliament office "promptly", where it was revealed he had to be cautioned because his "remarks were being used politically".

"In a plain language, it was meant to be that since my remarks are so controversial that I must shut up my mouth," Mr Yamagami has written in a book in Japan.

"The choice of the word 'caution' smacked of lecturing. As a general protocol of diplomacy, it was extraordinary and unacceptable for any

INSIDE

Eight weeks before Donald Trump has even been inaugurated, the second China-America trade war has begun. It is set to get very ugly, very fast.

WILL GLASGOW P2

have one of the strongest and closest relationships, particularly when it comes to trade and border security," Canada's Deputy Prime Minister, Chrystia Freeland, and Canada's Public Safety Minister, Dominic LeBlanc, said in a joint statement.

Economic argued that the tariffs on Canadian orange would be inflationary for America. Many in Ottawa speculated that the threatened tariffs were a negotiating tactic, although there is no consensus on what Mr Trump was promising for from Canada.

An identical 25 per cent tariff on Mexican auto has triggered the negotiations by Mr Trump, who

Continued on Page 7

MARK ROBERTS P2
EDITORIAL P1

The Australian Wednesday Nov 27

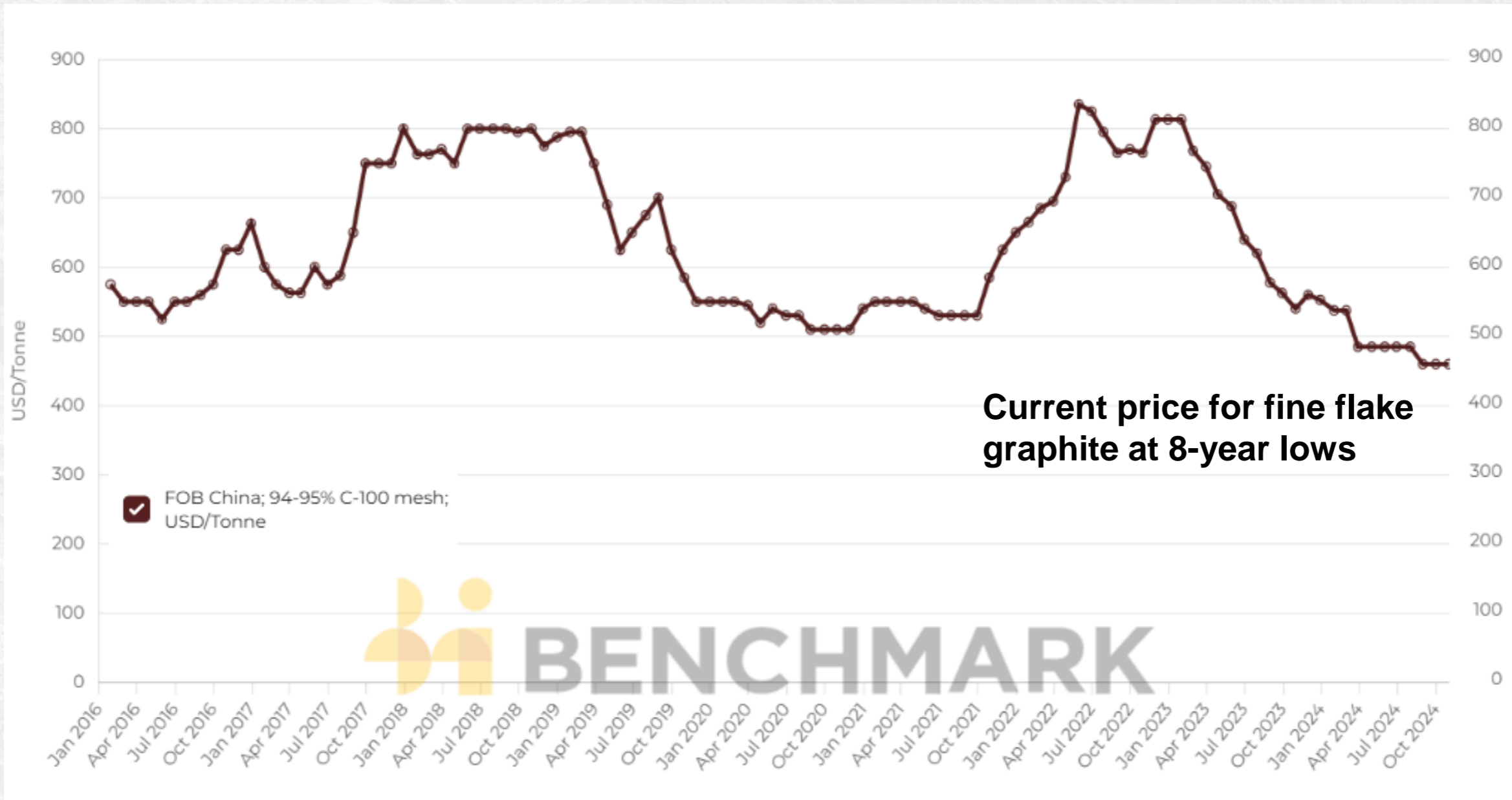


Market uncertainties positive for future battery minerals pricing

Australian Financial Review Wednesday Nov 27

Graphite Price

Graphite demand and supply constraints: **graphite price will respond**



► Kingsland Minerals – Going Forward



Maiden Mineral Resource Estimate Leliyn

- Infill drilling to upgrade to Indicated classification



Marketable concentrate >94%

- Commercial grade concentrate at 80% recovery

COMMENCED
Due first half 2025



Advanced graphite metallurgy test-work

- Assess optimal end-use for graphite concentrate, suitability for EV battery use

COMMENCED
Ongoing 2025



Mining studies

- Infill drilling to upgrade resource classification
- Off-take negotiations
- Mining lease application
- Plant flowsheet design

❖ **SCOPING STUDY - SECOND HALF 2025**

❖ **FEASIBILITY STUDY TO TIE IN WITH QUINBROOK DARWIN PROCESSING FACILITY**

Leliyn Graphite



Globally significant graphite deposit, tier one project in a tier one location



Leliyn has scale, Inferred MRE of 195mt @ 7.3% TGC



Leliyn has location, NT Australia is ideal for export to Asia

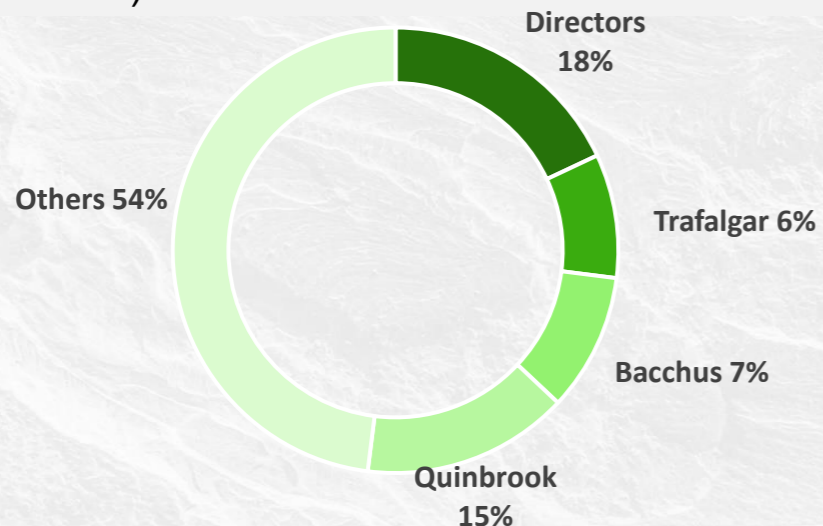


Strategic Partnership with a healthy balance sheet

► Kingsland (ASX:KNG) Corporate Snapshot

Capital Structure

Share Price	\$0.18
Shares on Issue	72.6m
Market Capitalisation	\$13m
Cash (pro-forma) ¹	\$3.2m
Enterprise Value	\$10m
Options on Issue (ASX:KNGO)	18.7m



Board of Directors



Richard Maddocks

Managing Director, MSc (Mineral Economics), BAppSc (Geology), Grad Dip (Finance & Investment), FAusIMM, GAICD

- Geologist with 30+ years of mining, development and exploration experience
- Geology Manager of large gold and nickel mines
- Experienced in business development, asset identification and resource estimation.



Bruno Seneque

Director, CFO, Company Secretary B Bus, CPA

- Corporate finance professional with 25+ years of experience
- Focused career of 23 years in the minerals industry
- Previously director of ASX listed Kairos Minerals operating in Pilbara of WA
- Significant experience as CFO of ASX listed explorers & mineral producers.



Nick Revell

Technical Director, BAppSc (Geology) MAIG

- Geologist with 30+ years mining and geology experience
- Significant experience in production and exploration of gold, base metals and uranium.
- Former director of several ASX listed companies.



Robert Johansen

Non-executive Director – Quinbrook nominee

- Qualified in mining engineering, commerce and law and has over 30 years' experience in the Australian and African minerals industry
- Rob has been Senior Director – Minerals for Quinbrook affiliate Private Energy Partners since April 2023 and is responsible for the formulation and execution of Quinbrook's Critical Resources Strategy.

1. Cash balance of \$0.7M at 30 Sept 2024 and \$2.56M placement proceeds

Appendix 1- Australian Graphite Deposits

ASX Code	Deposit	Company	Country	ASX Source	TOTAL MINERAL RESOURCE			Measured			Indicated			Inferred		
					Tonnes	Grade TGC%	Contained Graphite	Tonnes	Grade TGC%	Contained Graphite	Tonnes	Grade TGC%	Contained Graphite	Tonnes	Grade TGC%	Contained Graphite
KN6	Leliyn	Kingsland Minerals Ltd	Australia, NT	ASX announcement 13 March 2024	194,600,000	7.30	14,200,000							194,600,000	7.30	14,200,000
RNU	Siviour	Renascor Resources Ltd	Australia, SA	ASX announcement 14 Sept 2023	123,600,000	6.9	8,500,000	16,900,000	8.60	1,400,000	56,200,000	6.70	3,800,000	50,500,000	6.50	3,300,000
IG6	Springdale	International Graphite Ltd	Australia, WA	ASX announcement 12 Sept 2023	49,300,000	6.43	3,168,300				11,500,000	7.50	862,500	37,800,000	6.10	2,305,800
NVX	Mt Dromedary	Novonix Ltd	Australia, QLD	ASX announcement 20 Oct 2016	14,300,000	13.33	1,905,700	1,000,000	12.90	129,000	8,500,000	13.90	1,181,500	4,800,000	12.40	595,200
GCM	McIntosh	Green Critical Minerals Ltd	Australia, WA	ASX announcement 18 November 2022	23,800,000	4.45	1,058,000				19,200,000	4.44	853,000	4,600,000	4.50	205,000
LEL	Bourke	Lithium Energy Ltd	Australia, QLD	LEL 2022 Annual Report	6,300,000	16.0	1,008,000							6,300,000	16.00	1,008,000
MRC	Munglinup	Mineral Commodities Ltd	Australia, WA	ASX announcement 28 Apr 2023	7,990,000	12.2	973,190				4,490,000	13.10	588,190	3,500,000	11.00	385,000
ITM	Campoona	Itech Minerals Ltd	Australia, SA	ITM 2023 Annual Report	8,550,000	9.01	770,750	320,000	12.70	40,640	1,000,000	9.10	91,020	7,230,000	8.84	639,090
QGL	Uley	Quantum Graphite Ltd	Australia, SA	ASX announcement 14 March 2023	6,900,000	10.98	757,300	800,000	15.60	124,800	4,200,000	10.40	436,800	1,900,000	10.30	195,700
BUX	Graphite Bull (Yalbra)	Buxton Resources Ltd	Australia, WA	ASX announcement 12 October 2022	4,000,000	16.1	644,000							4,000,000	16.10	644,000
LML	Kookaburra	Lincoln Minerals Ltd	Australia, SA	LML 2022 Annual Report	11,750,000	14.95	308,630	390,000	14.90	58,110	10,800,000	14.90	160,920	560,000	16.00	89,600
OAR	Oakdale	Oar Resources Ltd	Australia, SA	ASX announcement 2 Dec 2015	6,320,000	4.70	297,040				2,690,000	4.70	126,430	3,630,000	4.70	170,610

Appendix 2- Global Graphite Deposits

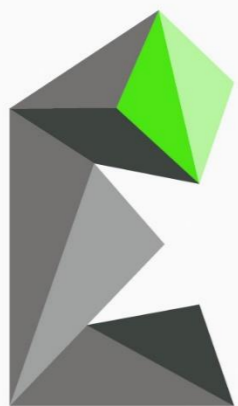
Ticker Code	Company	Deposit	Country	ASX Source Date	TOTAL MINERAL RESOURCE			Measured			Indicated			Inferred		
					Tonnes	Grade TGC%	Contained Graphite	Tonnes	Grade TGC%	Contained Graphite	Tonnes	Grade TGC%	Contained Graphite	Tonnes	Grade TGC%	Contained Graphite
SYR	Syrax Resources Ltd	Balama	Mozambique	2023 Annual Report	1,035,200,000	11.6	119,930,800	21,200,000	16.90	3,582,800	240,400,000	13.00	31,252,000	773,600,000	11.00	85,096,000
SGA	Sarytogan Graphite Ltd	Sarytogan	Kazakhstan	SGA 2022 Annual Report	209,000,000	28.50	60,000,000							209,000,000	28.50	60,000,000
SVM	Sovereign Metals Ltd	Kasiya	Malawi	ASX announcement 5 February 2024	1,809,000,000	1.37	24,400,000				1,200,000,000	1.50	18,000,000	609,000,000	1.10	6,500,000
VRC	Volt Resources Ltd	Bunyu	Tanzania	VRC 2022 Annual Report	461,000,000	4.95	22,824,000	20,000,000	5.30	1,060,000	155,000,000	5.00	7,750,000	286,000,000	4.90	14,014,000
EGR	Ecograf Ltd	Epanko	Tanzania	EGF Resource Update 11 March 2024	290,800,000	7.2	21,010,000	32,300,000	7.80	2,500,000	55,700,000	7.50	4,200,000	202,800,000	7.20	14,310,000
BKT	Black Rock Mining	Mahenge	Tanzania	BKT 2022 Annual Report	213,100,000	7.74	16,500,000	31,800,000	8.60	2,700,000	84,600,000	7.80	6,600,000	96,700,000	7.40	7,200,000
TSXV:GPH	Graphite One Inc	Graphite One	Alaska, USA	Graphite One PFS 13 October 2022	287,210,000	5.13	14,711,357	4,670,000	5.83	272,205	27,870,000	5.15	1,435,135	254,670,000	5.11	13,004,017
TSXV:NOU	Nouveau Monde Graphite Inc	Lac Gueret	Canada	Announcement 22 January 2024	83,460,000	17.19	14,360,000	19,020,000	17.90	3,400,000	46,620,000	16.90	7,890,000	17,820,000	17.2	3,070,000
KNG	Kingsland Minerals Ltd	Leliyn	Australia, NT	Announcement 17 March 2024	194,600,000	7.30	14,200,000							194,600,000	7.30	14,200,000
MNS	Magnis Energy Technologies	Nachu	Tanzania	MNS 2022 Annual Report	174,000,000	5.37	9,400,000	63,000,000	4.70	3,000,000	61,000,000	5.70	3,500,000	50,000,000	5.80	2,900,000

Competent Persons Statement

Information regarding the Mineral Resource Estimate for the Leliyn Graphite Deposit is extracted from the report 'Australia's Largest Graphite Resource' created on 13 March 2024. . This report is available to view on www.kingslandminerals.com.au or on the ASX website www.asx.com.au under ticker code KNG. The company confirms that it is not aware of any new information or data that materially affects the information included in the original market announcement and, in the case of estimates of Mineral Resources or Ore Reserves, that all material assumptions and technical parameters underpinning the estimates in the relevant market announcement continue to apply and have not materially changed. The company confirms that the form and context in which the Competent Person's findings are presented have not been materially modified from the original market announcement.

Information regarding drilling and exploration at the Leliyn Graphite Project is extracted from the reports 'Graphite Exploration Target Update' created on 19 June 2024, 'Graphite Exploration Target' created on 21 March 2023, 'Outstanding start to maiden drilling program with first holes intersecting 150m of graphitic schist' created on 25 May 2023, 'First assays reveal extensive high-grade graphite' created on 15 June 2023, 'Latest assays reveal more extremely wide intersections with high grades' created on 24 July 2023, 'First diamond core assays confirm high grades over big widths' created on 22 August 2023, 'Bonanza intersection of 206m at 10% graphite confirms Leliyn's world-class potential' created on 5 September 2023, 'Testwork confirms favourable flake size for lithium batteries' created on 7 September 2023, 'More Wide, High Grade Graphite Intercepts at Leliyn Graphite' created on 25 October 2023, 'Thickest intercept to date of 285m @ 6.1% TGC at Leliyn' created on 13 November 2023 and 'Further Thick and High Grade Graphite Intercepts at Leliyn' created on 18 December 2023. These reports are available to view on www.kingslandminerals.com.au or on the ASX website www.asx.com.au under ticker code KNG. The company confirms that it is not aware of any new information or data that materially affects the information included in the original market announcement and, in the case of estimates of Mineral Resources or Ore Reserves, that all material assumptions and technical parameters underpinning the estimates in the relevant market announcement continue to apply and have not materially changed. The company confirms that the form and context in which the Competent Person's findings are presented have not been materially modified from the original market announcement.

ASX: **KNG**



KINGSLAND
MINERALS

Contact

www.kingslandminerals.com.au

info@kingslandminerals.com.au

+61 8 9381 3820