



Closing in on the next big discovery



13 February 2025

Chris Byrne, *CEO & Managing Director*
chris.byrne@legacyminerals.com.au +61 499 527 547

Brisbane RRS

Disclaimer

This presentation may contain certain statements and projections provided by or on behalf of Legacy Minerals Holdings Limited (**ASX: LGM, Legacy Minerals, or the Company**) with respect to the anticipated future undertakings. These forward-looking statements reflect various assumptions by or on behalf of Legacy Minerals. Accordingly, these statements are subject to significant business, economic and competitive uncertainties and contingencies associated with the mining industry which may be beyond the control of Legacy Minerals which could cause actual results or trends to differ materially, including but not limited to price and currency fluctuations, geotechnical factors, drilling and production results, development progress, operating results, reserve estimates, legislative, fiscal and regulatory developments, economic and financial markets conditions in various countries, approvals and cost estimates, environmental risks, ability to meet funding requirements, share price volatility. Accordingly, there can be no assurance that such statements and projections will be realised. Legacy Minerals makes no representations as to the accuracy or completeness of any such statement of projections or that any forecasts will be achieved.

Additionally, Legacy Minerals makes no representation or warranty, express or implied, in relation to, and no responsibility or liability (whether for negligence, under statute or otherwise) is or will be accepted by Legacy Minerals or by any of their respective officers, directors, shareholders, partners, employees, or advisers as to or in relation to the accuracy or completeness of the information, statements, opinions or matters (express or implied) arising out of, contained in or derived from this presentation or any omission from this presentation or of any other written or oral information or opinions provided now or in the future to any interested party or its advisers. In furnishing this presentation, Legacy Minerals undertakes no obligation to provide any additional or updated information whether as a result of new information, future events or results or otherwise. Nothing in this material should be construed as either an offer to sell or a solicitation of an offer to buy or sell securities. It does not include all available information and should not be used in isolation as a basis to invest in Legacy Minerals.

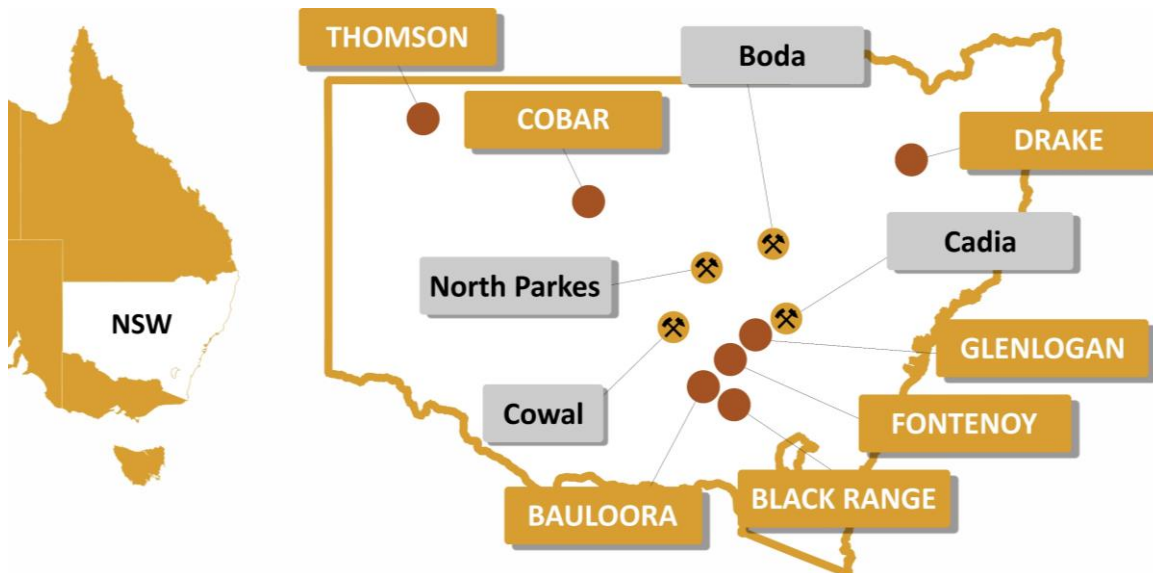
This presentation contains exploration results and historic exploration results as originally reported the Company's Prospectus dated 28 July 2021 and released 9 September and subsequent ASX market announcements. The Company confirms that it is not aware of any new information that materially affects the information included in the original market announcements and that all material assumptions and technical parameters underpinning the estimates in the relevant market announcements continue to apply and have not materially changed. The Company confirms that the form and context in which the Competent Persons' findings are presented have not been materially modified from the original market announcements.

The information in this presentation that relates to Exploration Targets, Exploration Results, Mineral Resources or Ore Reserves is based on information compiled by Thomas Wall, a Competent Person who is a Member of the Australian Institute of Geoscientists. Mr Wall is the Technical Director is a full-time employee of Legacy Minerals Limited and a shareholder, who has sufficient experience that is relevant to the style of mineralisation and type of deposit under consideration and to the activity being undertaken to qualify as a Competent Person as defined in the 2012 edition of the Australasian Code for Reporting of Exploration Results, Mineral Resources and Ore Reserves. Mr Wall consents to the inclusion in the report of the matters based on his information in the form and context in which it appears.

The release of these presentation materials has been authorised by the Board.



Legacy Minerals – NSW’s largest ASX Explorer



Map of NSW showing Legacy Minerals tenements and geographical location of major mining and exploration projects

100% Owned Projects - 7,067km²

Thomson, Drake, and Black Range

Joint Venture Projects -1,070km²

Bauloora, Fontenoy, Glenlogan, Cobar

Newmont

EARTH AI

S2 Resources

Why New South Wales?

- Home to Australia’s largest gold mine (Cadia) and continued discovery success
- Value demonstrated by global mining company investment
 - **Since 2023, NSW has seen A\$16B in mining M&A deals and \$300m in exploration JVs¹**



ASX: LGM

Legacy Minerals at a glance

Share Price \$0.17 **Market Cap** \$21M



Shares 125M **Top 20** 42% **Joint Venture Funding** \$28.3M

Options 24M (\$0.2, \$0.3) **Cash – 31 Dec** \$3.1M **Debt** Nil

Newmont

S2R
S2 Resources

EARTH AI

New Significant Shareholder
Fleet Space

FLEET

Team



Dr David Carland
Non-Executive
Chairman



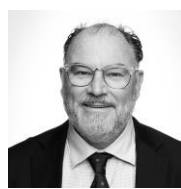
Christopher Byrne
CEO and
Managing Director



Douglas Menzies
Non-Executive
Director



Thomas Wall
Exploration Manager
and Executive Director



Matthew Wall
Non-Executive
Director



Dr John Greenfield
Chief Technical Advisor



ASX: LGM

Drake

Brownfields Discovery Opportunity with multi-million-ounce system potential

79

Au

47

Ag

29

Cu

The Drake Project

A rare, advanced “brown-field” discovery opportunity

Discovery Upside – Porgera style Cu-Au deposit (~19.7Moz)¹ analogue

- One of the largest mineral systems in NSW within a >160km² caldera setting.
- Multitude of untested discovery opportunities

Widespread 100 AuEq g/t m hits demonstrate potential²

- 12.82m at 48g/t Au and 2,589g/t Ag from 16m (ALA)
- 118m at 1.71g/t Au, 6.9g/t Ag, and 1.12% Zn from 2m (ALA)
- 143m at 1.1g/t Au, 3g/t Ag, and 0.9% Pb+Zn from 0m (EL)
- 16m at 5.8% Cu from 58m and 10.1m at 7.26% Cu from 88m (ALA)

Existing Resource

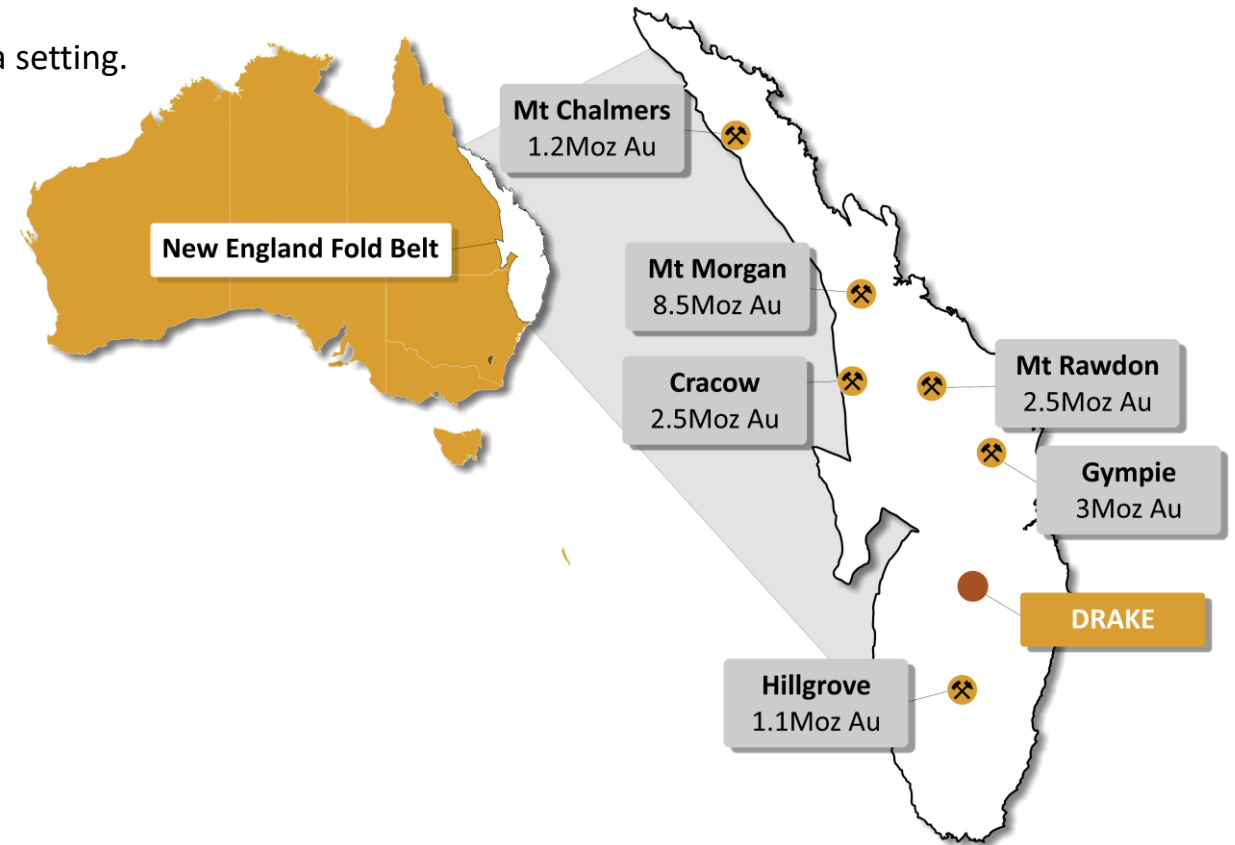
- Existing JORC 2004/2012 Resource being updated currently.

Sunk capital – Brownfields Site

- Estimated \$30M in infrastructure, \$50M and previous exploration.

Development opportunity - Mt Carrington Area ALA75

- Currently an Assessment Lease Application (ALA)
- ALA provides pathway to future mining licence
- Viable site for future production



ASX: LGM

Drake – Rich Discovery Opportunity

Target rich-epithermal space¹

- **3,367** total historical mining features, increased from approximately 1,663 known previously.
- Scale and density of workings highlights the size of mineral system present.

Extensive Mineral System Footprint²

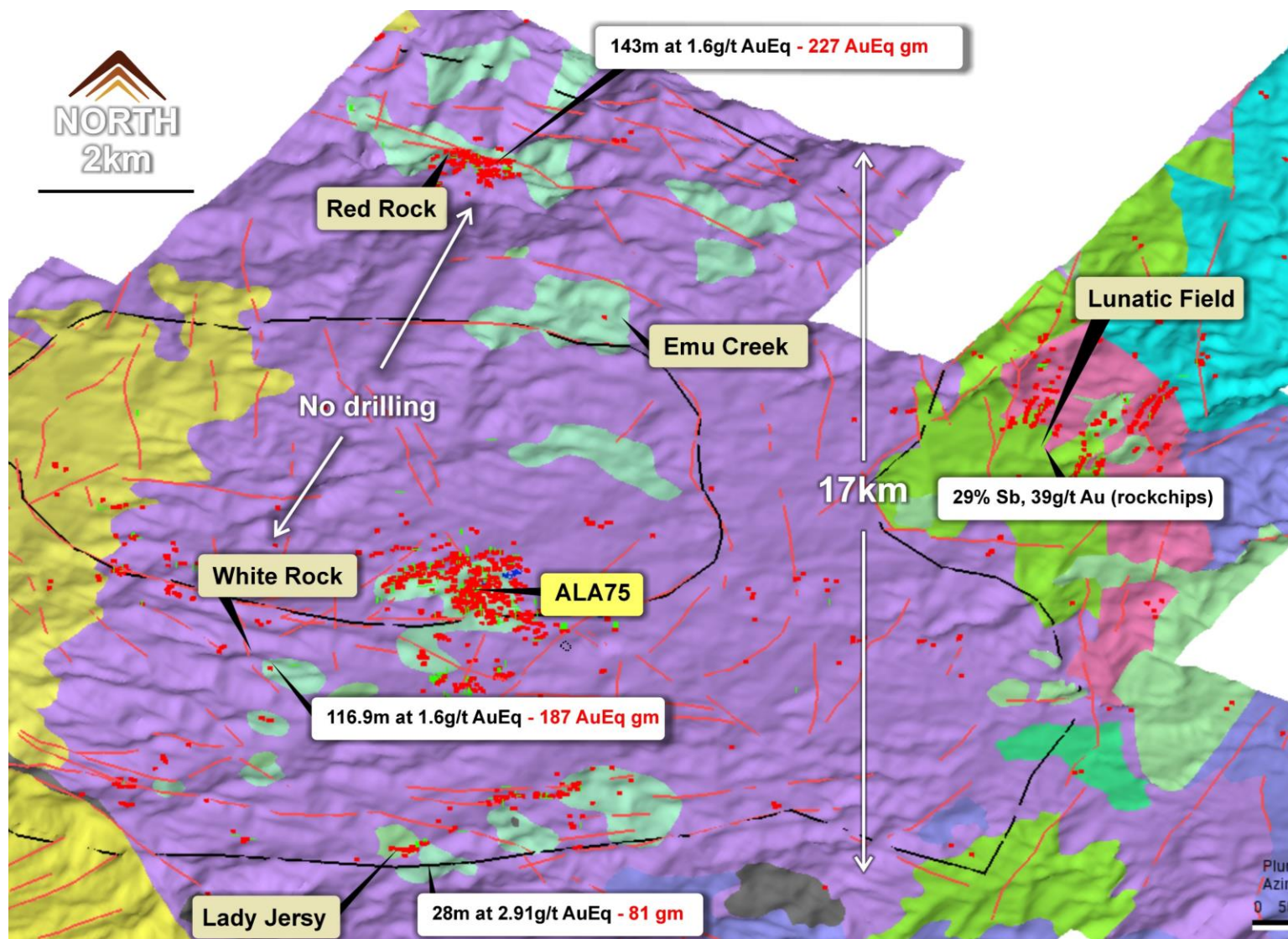
- Large number of 100g/t AuEq drill hole intercepts across wide areas highlight prospectivity.

Shallow, limited drilling

- Most drilling focused on the Mt Carrington area
- **Average drill hole depth 49m with more than 95% of the drilling shallower than 150m DH length**

Airborne MT Survey commencing

- A key focus of our systematic exploration strategy, aiming to replicate the successful MT surveys instrumental in the exploration success at K92 (TSX:KNT) and underway with Tolu (ASX:TOK)



ASX: LGM

Drake – Brownfields Opportunity

Exploration upside with key infrastructure already in place

2017 PFS demonstrates robust base case¹

- \$A3,000 Au price, AISC \$1,327, 1.3g/t Au Grade
- NPV \$185M, IRR 153%, CAPEX A\$39M
- 33koz Au, 5 year mine life
- PFS only captures 23% of existing MRE

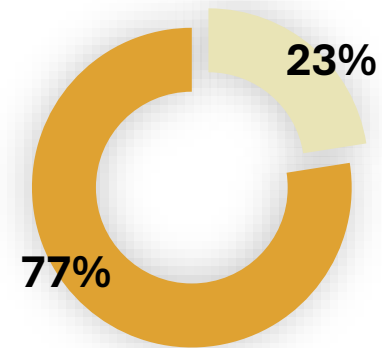
Viable site for Future Production

- Opens pits pre-stripped, haul roads completed, tailings dam and freshwater dam installed, grid easement constructed, minor site infrastructure and site office and core yard

2025 MRE Update Nearing Completion

- Aim is to help guide the **brownfield exploration strategy** and drill targeting for major discovery focus
- Updated MRE to be used to validate the 2017 PFS

Drake Mineral Resource Estimate



77% of the MRE outside of 2017 PFS



Mt Carrington Mine Site including infrastructure and tailings dam



ASX: LGM

Thomson

Big belt scale exploration opportunity



LEGACY
MINERALS



Thomson Belt Scale Au-Cu Opportunity

Frontier exploration across 5,500km²

Big targets - Intrusion Related Au-Cu Potential

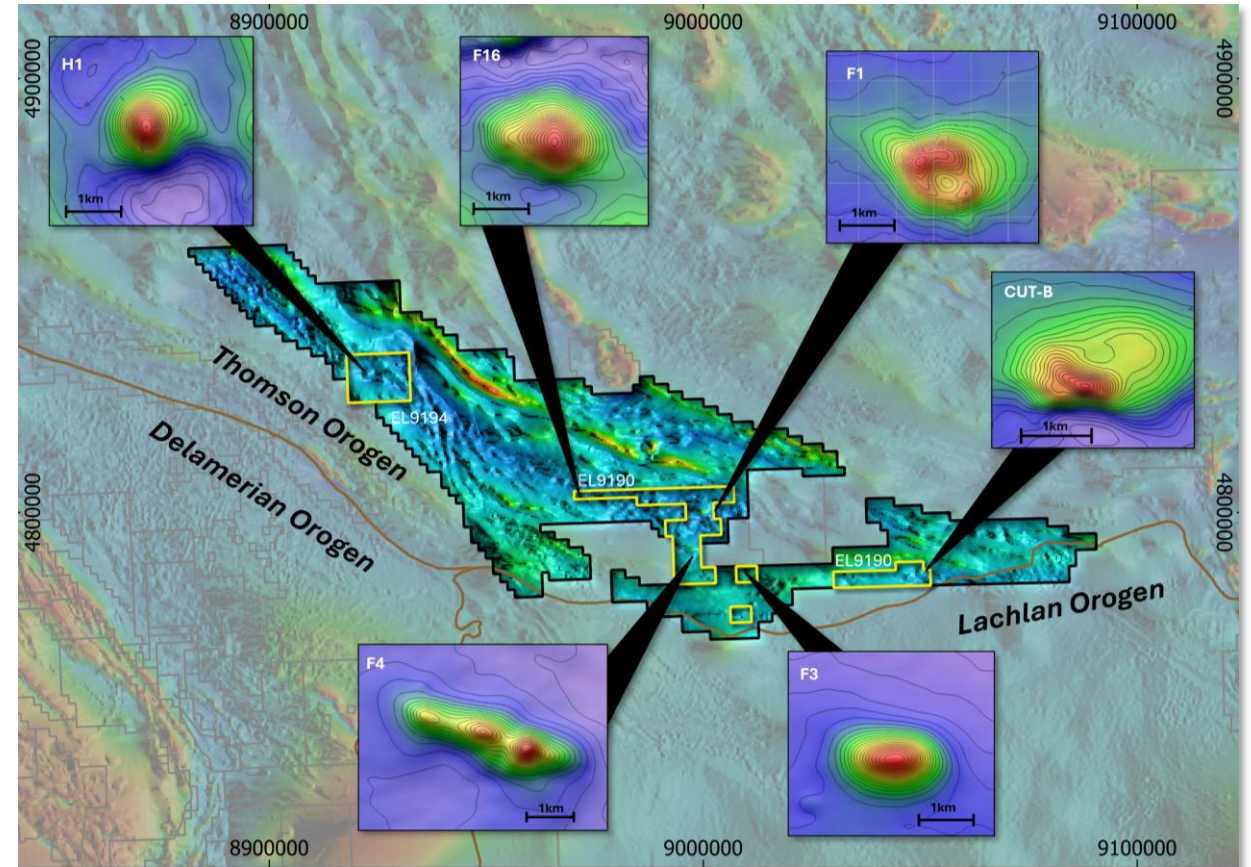
- Concept confirmed through analysis of historic drilling
- Target rich environment
 - Numerous bulls-eye magnetic and gravity anomalies
- Large alteration footprints

One of the most under-explored orogens in Australia

- Early mover advantage and big discovery exposure
- Belt scale exploration opportunity (5,500km²)
- Successful discovery opens multitude of walk-up drill targets

Pathway to Discovery

- Cover sequence geophysically transparent
 - Gravity, magnetics, IP and potentially ground EM.
- Shallow cover means cost-effective drilling rates.



Project overview showing EL9190, EL9194, EL9278 and examples of “bullseye” magnetic targets. All magnetic targets shown here indicate a magnetic body >100Mt¹.



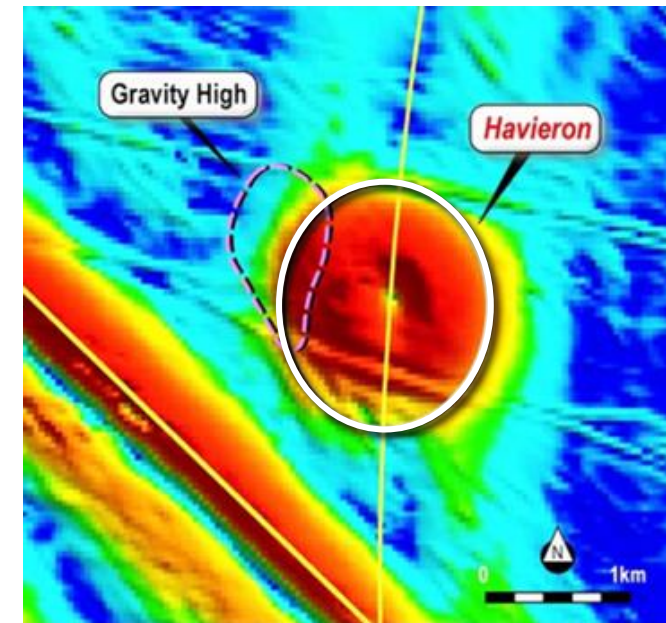
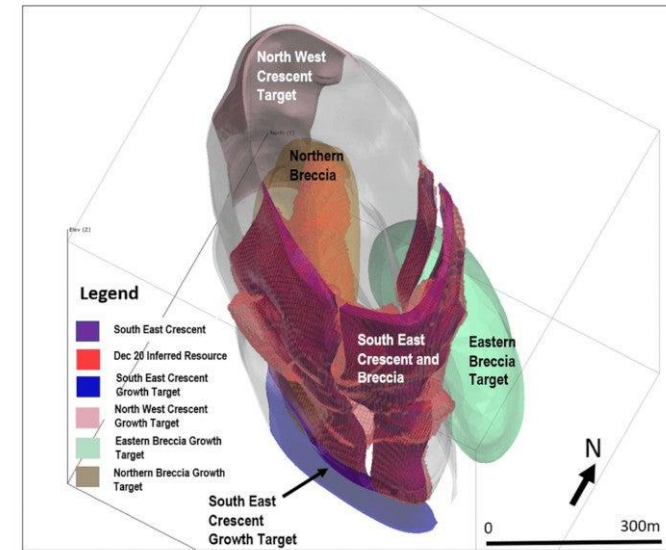
Analogue Deposit¹

Havieron Deposit (Greatland Gold)¹

Au-Cu Intrusion Related Deposit

- Havieron is an intrusion- related system with gold and copper mineralisation hosted in breccia, vein and massive sulphide (pyrrhotite dominant) styles
- High grade gold and copper mineralisation discovered under more than 400 m of post-mineralisation cover
- Drill testing of a coincident magnetic and residual gravity anomaly.
- Circular magnetic anomaly within generally bland magnetic terrain.

- ✓ Bulls-eye to sub-circular magnetic high anomalies
- ✓ Meta-sedimentary host rocks;
- ✓ Pyrrhotite related mineralisation; and
- ✓ Related gravity high anomalies.



Discovery of the Havieron Gold-Copper deposit, WA (James et al., 2022)

Note: references on this slide are in the Appendix – Endnotes on Slide 20

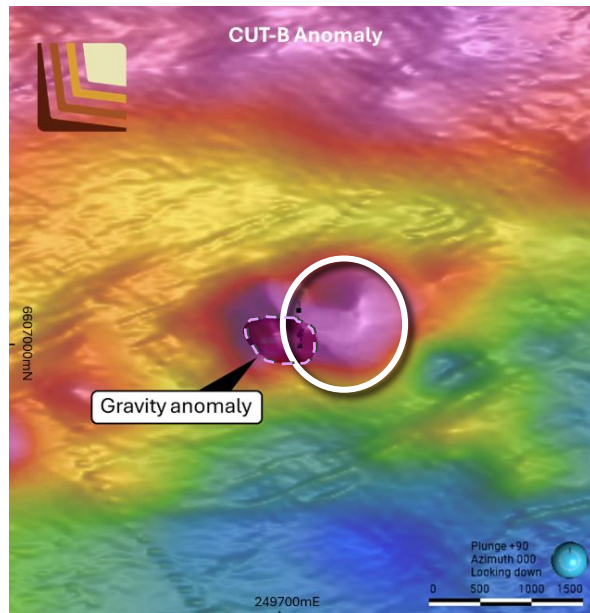


CUT-B Anomaly¹

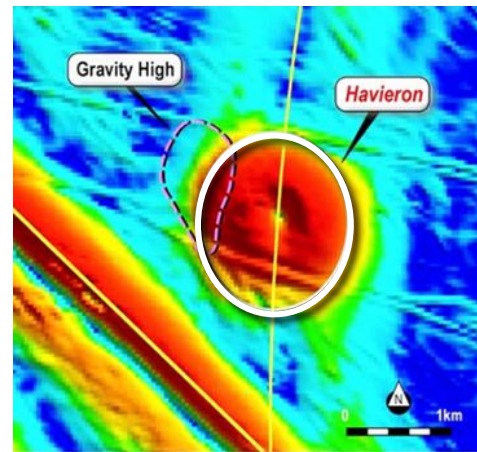
Compelling Geophysical Target

Confirmed Intrusion related Au-Cu Potential

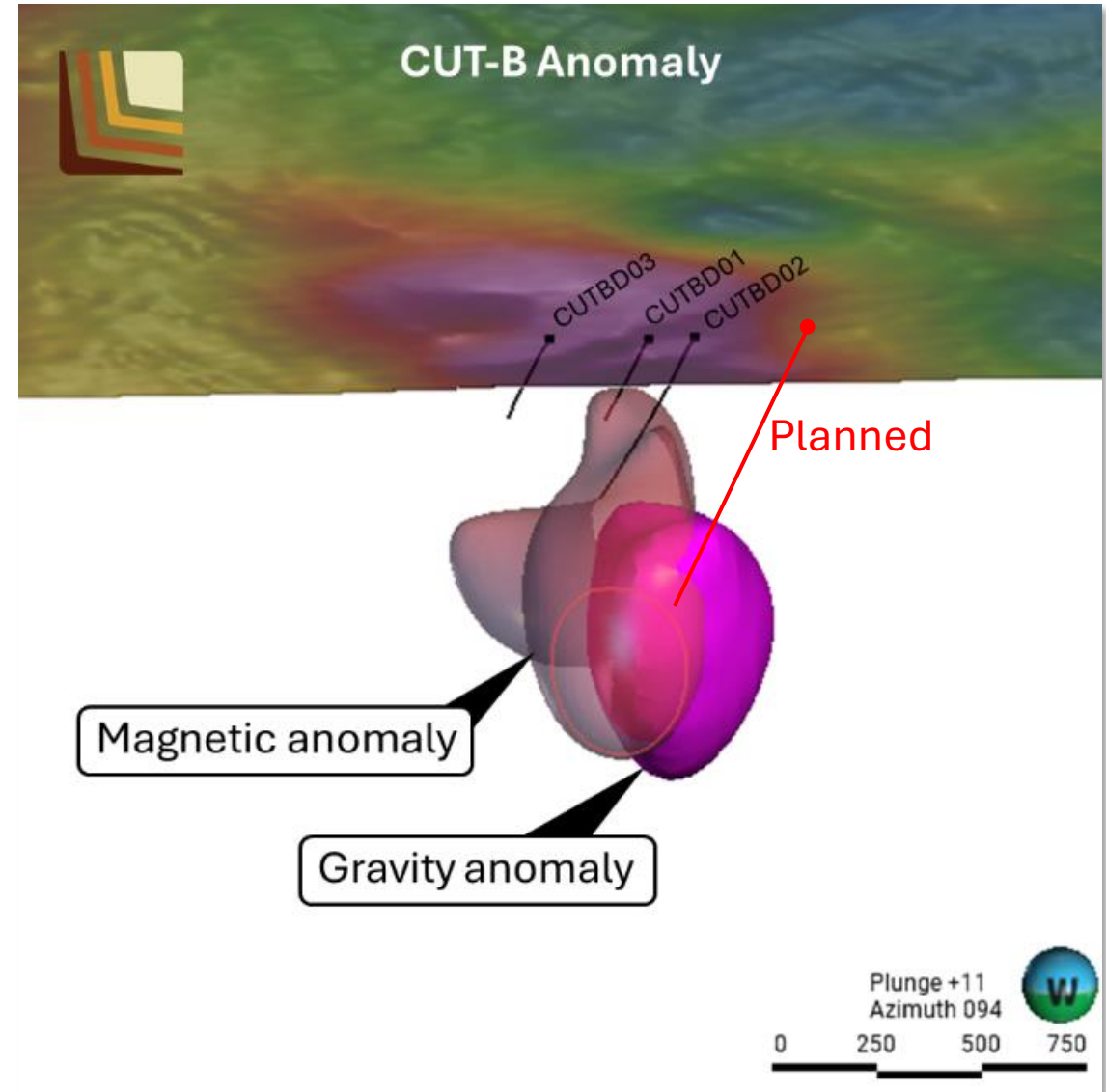
- Proof of concept confirmed in historic drilling
- Untested gravity anomaly along strike of strong and extensive alteration intercepted in drilling
- Proximal IRG-Cu pathfinders indicate nearby prospectivity



Plan view of the CUT-B magnetic body and adjacent gravity high anomaly.



Plan view of Havieron magnetic body and adjacent gravity high



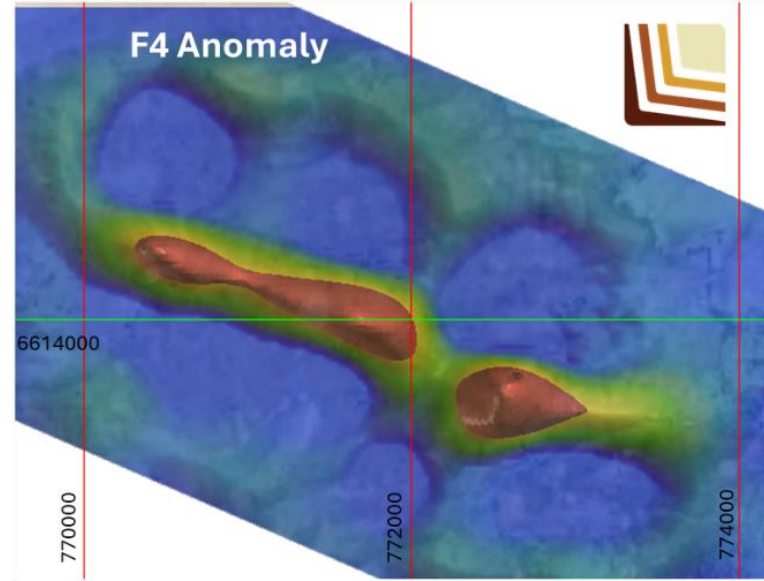
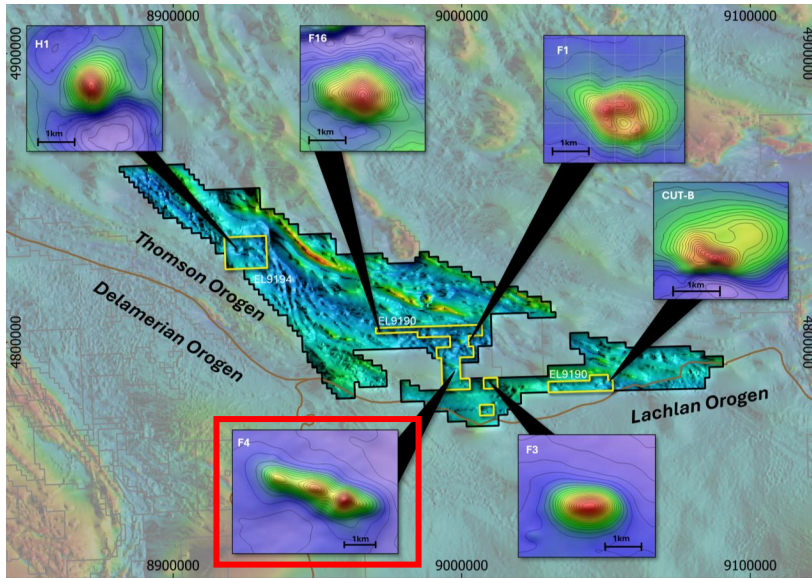
Untested gravity high anomaly (density >2.8) adjacent to magnetic anomaly shells (>0.005 SI) (section 249,700mE, MGA94 z55).

Note: references on this slide are in the Appendix – Endnotes on Slide 20

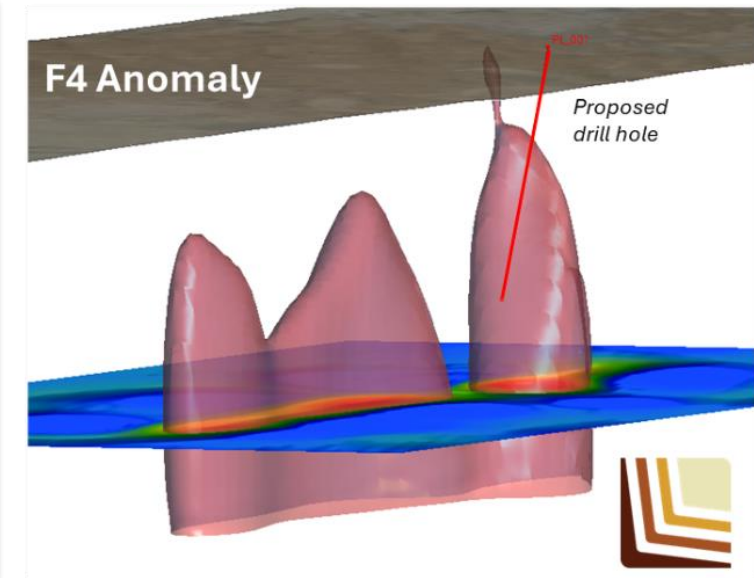


Upcoming Drilling - F4 Anomaly Mag Modelling

Undrilled high priority target



Plan view of the F4 magnetic anomaly shells (>0.006 SI) over aerial image.



3D magnetic inversion model anomaly shells (>0.006 SI) (section 6613500mN, MGA94 z54).

- **Undrilled standout magnetic anomaly**
- Modelled magnetic body strikes WNW over 3km
- F4 anomaly geometry is suggestive of intrusive
- F4 magnetic body is modelled to come to within 160m of surface



Joint Venture Projects

\$28.5M in JVs sees sustained discovery effort



NewmontTM

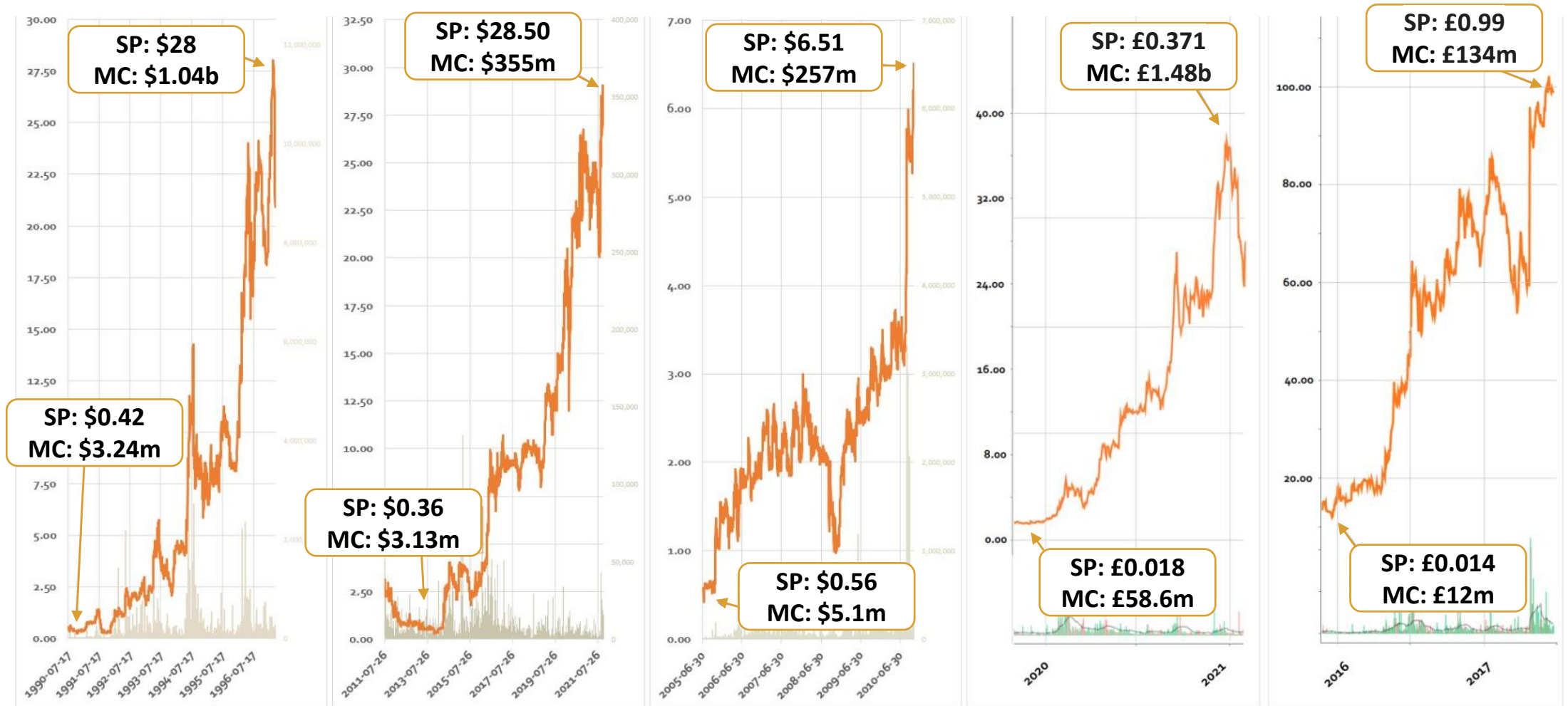
SR

EARTH AI

HELIX
RESOURCES LIMITED

The upside in a JV - non-dilutive potential for value creation

Like 100% owned projects, partnerships can deliver significant returns for shareholders



Aber Resources
30/70 JV with Rio Tinto

Abitibi Royalties
30/70 JV Osisko Mining

AuEx Ventures
49/51 JV with Frontier

Greatland Gold
25/75 JV with Newcrest

Mariana Resources
30/70 JV with Lidya



ASX: LGM

Fontenoy on track to deliver a breakthrough

Significant new PGE discovery in 2024

Fontenoy - Australia's best exploration PGE drill hit in 2024¹

- The maiden campaign delivered²:
- 120m at 0.3g/t 3E PGE*** including a higher-grade zone of:
 - 10m at 1.2g/t 3E PGE, 0.2% Ni and 891ppm Cu** from 388m down-hole

Previously unrecognised mineral system

- Magmatic Ni-Cu-PGE systems rare systems in NSW

Ai led discovery – one of the few real ones

- Subsequently EarthAi recently securing \$20m in funding (Feb25)

Joint Venture Terms²

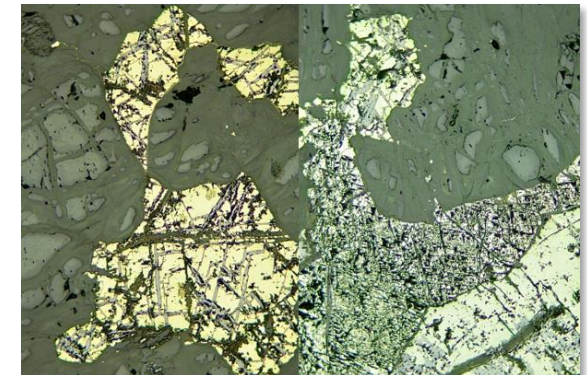
- \$4M earn in over 4 years with minimum commitment to drill
- LGM loan carried through to commercial production at 20%**

* No cut off grade

ROCK REPORT
Exploration & Mining
Insights

BEST PGE DRILL INTERCEPTS 2024

Company	Country	Project	g/t PGE	Interval m	Grade x Width
Clean Air Metals	Canada	Thunder Bay North	9.58	51.79	496.15
Power Nickel	Canada	Lion	22.79	11.4	259.8
Bravo Mining	Canada	Luanga	3.59	58.3	209.3
MAGNA MINING	Canada	Crean Hill	25.3	7.8	197.3
Canada Nickel	Canada	Crawford	2.19	76.5	167.54
Metallic Minerals	USA	La Plata	0.166	816	135.4
Legacy Minerals	Australia	Fontenoy	0.3	120	36
SOQUEM	Canada	Cardinal	1.02	25.3	25.8
Generation Mining	Canada	Billwobik	3.05	8	24.4
ValOre	Canada	Pedra Branca	2.3	10	23
Southern Palladium	South Africa	Bengwenyama	6.69	1.3	8.7
Infinico Metals	Canada	Nicobi	0.16	51.94	8.3



Disseminated interstitial Ni-Cu-Fe sulphides and photomicrograph (field of view 1mm across) of the mineralisation (composed of bronze pentlandite, yellow chalcocopyrite and brown pyrrhotite)²

Drilling interval with Ni-Cu-Fe sulphides (within 10m at 1.2g/t PGE)²

Note: references on this slide are in the Appendix – Endnotes on Slide 20



Glenlogan – S2 Resources JV (\$6m)

Drill targeting geophysics underway

Preliminary Drill Observations¹

- Late magmatic chalcopyrite and elevated copper
- May represent the fringes of a **nearby potentially mineralised porphyry intrusion**.
- **>100m of pyrite alteration to end of hole**

Previously unrecognised Ordovician intrusive

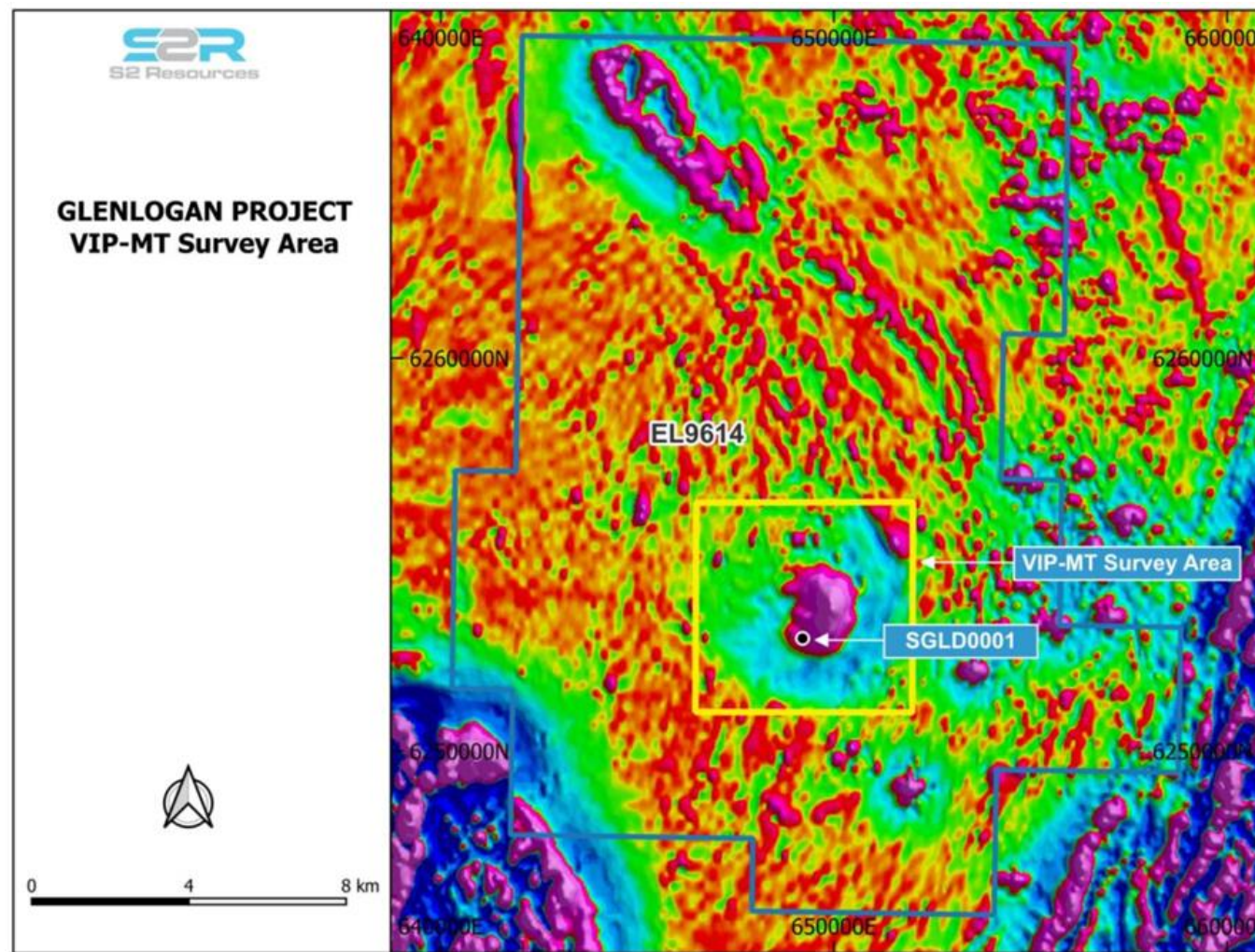
- Glenlogan is 50km south of Cadia, with Gold Fields aggressively exploring the surrounding tenement

Joint Venture Terms²

- Up to \$6M spent over 6 years.
- Minimum drill meters.
- LGM option for 20% loan carried to mining.

Partnership with a leading exploration company

- S2 Resources led by Dr Mark Bennet with Mark Creasy as major shareholder



Bauloora – Newmont (\$15M)

Assays pending from 2024 drilling and generative exploration progressing

Primary Vein Field and Current Targets

Joint Venture Terms¹

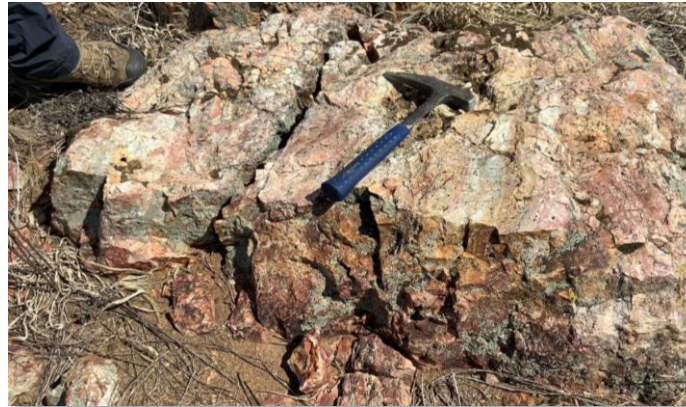
- Up to \$15M spent over 8 years.
- Minimum drill meters.
- **LGM option for 20% loan carried to mining.**

District scale control

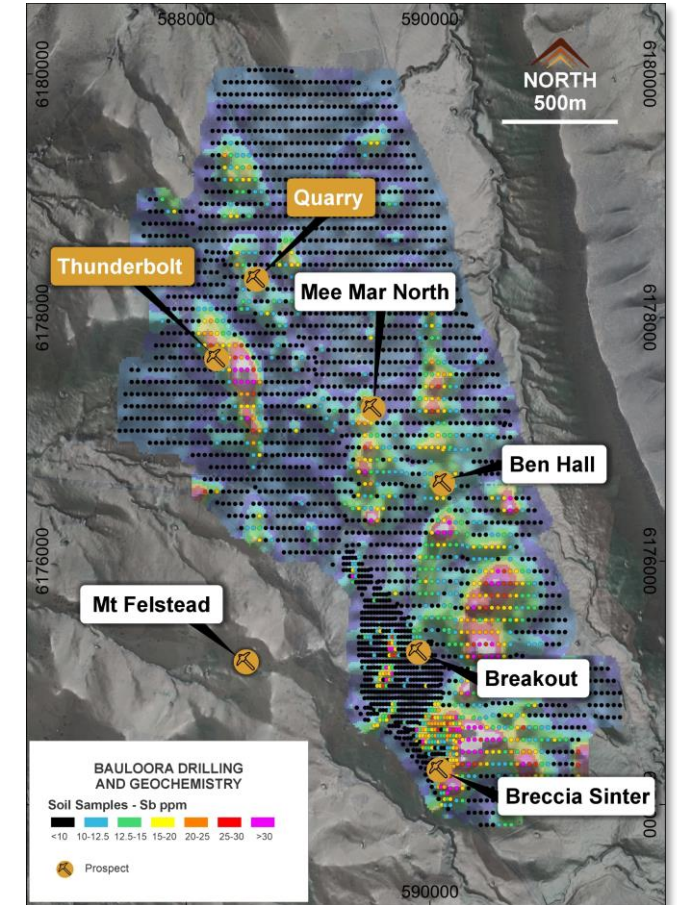
- 27km² low sulphidation epithermal vein field²
- Target rich environment

High-Grades and Extensive Veining^{3,4}

- Veins up to 3m wide at surface strike >2km
- **3,701g/t Ag, 6.9g/t Au, 6.4% Cu, and 55% Pb+Zn** (0.2m face sample)
- 6m at 3.56g/t Au, 10.95g/t Ag, 0.22% Cu and 6.47% Pb+Zn (from 57m)



Example of outcropping epithermal chalcedony-quartz vein at the Quarry Prospect (no estimated sulphides, no samples taken)⁵



Current combined extent of interpreted low-sulphidation epithermal-style textured veins and sinter related lithology⁵

Cautionary Note – Visual Estimates of Mineralisation: ‘Visual estimates of mineral abundance should never be considered a proxy or substitute for laboratory analyses where concentrations or grades are the factor of principal economic interest. Visual estimates also potentially provide no information regarding impurities or deleterious physical properties relevant to valuations. See ASX Release LGM 25 November 2024 Drilling Underway at the Bauloora Project - Amended



Big Targets

New Ideas

New Tech

Discovery ready

Feb/Mar Catalysts

- MRE Update (Drake)
- AI Fleet Space Survey (Thomson)
- Airborne MT Survey (Drake)
- Drill Assays Due (Bauloora)
- Drill Assays Due (Thomson)
- Drill Assays Due (Fontenoy)
- Drill Assays Due (Drake)
- Antimony Rock Chips Due (Drake)
- Drilling Commencing (Thomson)

Appendices – Endnotes

Intro Slide 3: 1 Blue Ocean Equities, Waratah Minerals Research Initiation (8 October 2024), Australia's Identified Mineral Resources 2023, Mineral Exploration, 1 March 2024, Geoscience Australia

Drake Slide 6: 1 World Gold, 2 Pacific Rim Epithermal https://corbettgeology.com/wp-content/uploads/2016/07/corbett_pacific_rim_epithermal_au.pdf,

2 ASX LGM Release 29 October 2024 *3,050gt Silver and 79gt Gold in Historical Drake Drilling*, **Slide 7:** 1 ASX Release LGM 16 December 2024 *Over 100% Increase in Historical Mines identified at Drake*, 2 ASX LGM Release 29 October 2024 *3,050gt Silver and 79gt Gold in Historical Drake Drilling*; ASX LGM Release 16 Sep 2024 *29% Antimony Rock Chips Identified in Drake Project Review* **Slide 8:** 1 White Rock Resources <https://www.whiterockminerals.com.au/mt-carrington-development>

Thomson Slide 110: ASX Release LGM 9 December 2024 *Thomson Drill Targets Announcement 4 December 2024 – Amended*, **Slide 11:** 1 AIM release GGP 21 December 2023, *Havieron Mineral Resource Estimate update, Exceptional Mineral Resource growth continues at Havieron*. **2** Hanneson, J. E., & Baxter, C. N. (2022). Discovery of the Havieron Gold-Copper deposit, WA. *Preview*, 2022(219), 42–47. **Slide 12:** 1 ASX Release LGM 9 December 2024 *Thomson Drill Targets Announcement 4 December 2024 – Amended* **Slide 16:** 1 ASX Release LGM 9 December 2024 *Thomson Drill Targets Announcement 4 December 2024 – Amended*, **Slide 13:** 1 ASX Release LGM 9 December 2024 *Thomson Drill Targets Announcement 4 December 2024 - Amended*

Joint Ventures Slide 15: GoldDiscovery Group, https://www.linkedin.com/posts/golddiscovery-media-b-v_why-buy-a-junior-miner-with-a-minority-stake-activity-7173060437201129472-UGoE?utm_source=share&utm_medium=member_desktop

Slide 16: 1 ASX LGM Release 25 October 2024 *Platinum & Palladium Drilling Underway at Fontenoy*, ASX LGM 26 February 2024 *Artificial Intelligence makes Magmatic PGE-Ni-Cu Discovery*, 2: ASX LGM 3 May 2022 *Strategic Exploration Alliance with AI Explorer* 3 IGO Ltd, <https://www.igo.com.au/site/operations/nova3> Chalice Mining Limited, <https://chalicemining.com/gonneville/>

Slide 17: 1 ASX 9 November 2023 *Major Untested Porphyry Cu-Au Target Defined at New Project*, 3: ASX LGM 29 January LGM: S2R enter \$6M Farm-in at Glenlogan Porphyry Project, ASX S2R: 18 July 2024, *Drilling started at Glenlogan Copper-Gold Project, NSW*, ASX LGM: 3 September 2024 S2R: *Glenlogan Drilling Update*

Slide 18: 1: ASX LGM: 5 April 2023 *Newmont Farm-in at Bauloora Project*, ASX LGM 2: ASX LGM 27 April 2023 *Exploration underway at new low-sulphidation epithermal, NSW*, 3: ASX LGM: 16 June 2022 *High-Grade Silver, Gold Drill Results, Met-Testing Underway, Legacy Minerals Prospectus, dated 28 July 2021*, 4: ASX LGM: 10 May 2023 *Drilling Assays Confirm New Epithermal Discovery at Bauloora*, 4: ASX LGM 25 November 2024 *Drilling underway at the Bauloora Project - Amended*

